

2008 International Counseling Psychology Conference

CREATING THE FUTURE:
Counseling Psychologists in a Changing World

March 6 - 9, 2008 • Chicago, Illinois • USA

PROGRAM



*APA – Society of Counseling
Psychology Division 17*

*Primary Sponsors:
Council of Counseling
Psychology Training Programs*

*Association of Counseling
Center Training Agencies*

2008 International Counseling Psychology Conference

Keynote Speakers

Thursday, March 6

The following renowned international scholars will engage in a lively dialogue on global perspectives in counseling psychology practice, training, and research. The distinguished panelists include:



Andrés Consoli, Ph.D., President of the Interamerican Society of Psychology, Professor and Associate Chair in the Department of Counseling, College of Health and Human Services, San Francisco State University, and Visiting Professor in the Department of Psychology at the Universidad del Valle de Guatemala. *Socially Engaged, Strength-Based, Emancipatory Practices and the Americas: An Agenda for Counseling Psychology.*



M. Eduarda Duarte, Ph.D., Chair of the Portuguese Psychological Society, Professor, Faculty of Psychology and Education, Director of the Human Resources Psychology Master Program, and Co-Research Director of Career Guidance and Development of Human Resources Unit Research, University of Lisbon. *Anticipating the Future in Counseling Psychology.*



Nhlanhla Mkhize, Ph.D., Co-Principal Investigator of the South African Research Ethics Training Initiative, Consultant, HIV-Aids Vaccines Ethics Group, and Associate Professor of Psychology at the University of KwaZulu-Natal, South Africa. *Speaking Together: Incorporating Indigenous Perspectives in Counseling Psychology.*



Li-fei Wang, Ph.D., President of the Division of Counseling Psychology, Chinese Guidance and Counseling Association in Taiwan and Professor at the National Taiwan Normal University, Taiwan. *What I Have Learned from the Development of Taiwan Counseling Psychology.*

Friday, March 7



Sandra (Sandy) Shullman, Ph.D., Managing Partner of the Columbus office of the Executive Development Group, an international leadership development and consulting firm.

Saturday, March 8



Nancy Boyd-Franklin, Ph.D., Author and Professor at Rutgers University in the Graduate School of Applied and Professional Psychology





**2008 International Counseling Psychology Conference
March 6 - 9 • Chicago, IL
The Chicago Hilton and Towers**

Creating The Future: Counseling Psychologists in a Changing World

- Nearly 1,400 students, counselors, and counseling psychologists from throughout the world;
- Pre-conferences, symposia, working groups, roundtables, continuing education, workshops, research paper presentations, poster sessions, and exhibits;
- Keynote presentations and *The Many Faces of Counseling Psychology Awards*;
- Invited programming focus on: diversity, early career professionals, education and training, international, practice, science, and students;
- Mentoring opportunities for students and early career professionals;
- Legislative advocacy.

Welcome2
 Steering Committee2
 Organizing Committees.....3

Daily Schedule

Thursday, March 6.....4
 Friday, March 78
 Saturday, March 8.....28
 Sunday, March 944

Exhibit Hall Floor Plan.....47
 Exhibitors and Sponsors48
 Meeting Space Diagrams.....52

**Sponsored by the Society of Counseling Psychology (SCP)
Division 17 of the American Psychological Association
(APA), Council of Counseling Psychology Training Programs
(CCPTP), and the Association of Counseling Center Training
Agencies (ACCTA)**

The ICPC 2008 wishes to recognize conference planners
Debra Nolan, CAE, and Gregory Brooks
for their professional and outstanding service.

WWW.AMCSOURCE.COM

Accreditation

The Society of Counseling Psychology (SCP) is approved by the American Psychological Association to sponsor continuing education for psychologists. SCP maintains responsibility for this program and its content.

CONFERENCE WELCOME



Linda Forrest, Ph.D.



Laura Palmer, Ph.D.

Welcome!

2008 International Counseling Psychology Conference

Welcome to the 2008 International Counseling Psychology Conference, "Creating The Future: Counseling Psychologists in a Changing World." This conference marks the first international counseling psychology conference and the fifth national conference (Northwestern University, 1951, Greystone, 1964, Georgia, 1987, and Houston, 2001). We are proud to follow in the tradition of these previous counseling psychology conferences that each in their own way and time has helped shape counseling psychology. The legacies of these conferences live on and have been the foundation on which the planning for the 2008 International Counseling Psychology Conference (ICPC) rests.

Following the tradition of recent conferences, the 2008 International Counseling Psychology Conference is "grander in scale and more ambitious than its predecessors" (Fouad et al., 2004, p. 64), because the conference planners decided early to extend our reach beyond the boundaries of the United States. We extend a special and warm welcome to our colleagues who have traveled from other countries to make this a truly international gathering. We know that your presence will enlighten us, challenge assumptions we hold, and stretch us to think more broadly and inclusively about counseling psychology. We have worked hard to showcase scholars from around the world. Over 180 scholars with addresses outside the United States are listed on the conference program. The 2008 ICPC provides an opportunity to engage in dialogue with international colleagues, explore the commonalities and differences among of our disciplines and set forth an international focus and agenda for years to come.

Many individual students and professionals have been involved in planning this conference over the last 24 months. As a group we are excited about what we have helped create and are eager to see it unfold. The next three days offer a plethora of opportunities for students, early career, mid-career and more senior professionals, whatever the job setting or focus of your work (teaching, research, practice, advocacy). Conference attendees will engage in learning, teaching, and talking about critical local, national and international issues. The program will offer many ways to do this. There will be keynote addresses, continuing education workshops, working groups, symposia, research paper and posters sessions, roundtables, and social events such as receptions and a dance.

Similar to the previous counseling psychology conferences, the 2008 International Counseling Psychology Conference promises to be a historical event. Building on the social advocacy groups of the Houston 2001 conference, each conference participant will have the opportunity to join a working group on a topic of his/her choice. Working groups will meet on Friday and Saturday from 10:00 am til noon. We are hoping that four hours together in work groups will provide an opportunity for conference participants to experience active engagement and help move forward important counseling psychology agendas. As conference planners we are eager to see the potential products that will result from dedicating significant conference time to work groups.

The conference theme "Creating the Future: Counseling Psychologists in a Changing World" means your presence and active participation in the next three days will be an important part of creating the future of counseling psychology as well as the impact and legacy of this conference. With great eagerness, let the conference begin.

Linda Forrest, Ph.D.
University of Oregon
President, Society of Counseling Psychology
2008 ICPC Conference Co-Chair

Laura Palmer, Ph.D.
Seton Hall University
Past Chair, Council of Counseling Psychology Training Programs
2008 ICPC Conference Co-Chair

Steering Committee

Co-Chairs

Linda M. Forrest
Laura K. Palmer

Members

Sherry A. Benton
Kathleen J. Bieschke
Emilia Boesch
Cyndy J. Boyd
Y. Barry Chung
Kathlyn C. Dailey
Michael Duffy
Lawrence H. Gerstein
Alberta M. Gloria
Robert Lent
Karin Lutter
Marie L. Miville
Jacquelyn Smith
Elizabeth M. Vera
Sue Whiston
Carrie L. Winterowd

Many Thanks to the Following Organizing Committees for Their Work on the Conference!

Awards and Recognition Committee

Kristee Haggins, tri-chair
Charlie Waehler, tri-chair
Lauren Weitzman, tri-chair

Closing Session/Town Hall Committee

John Westefeld, chair
Rosie Bingham
lore m. dickey
Changming Duan
Lisa Edwards
Anne Farrar-Anton

Conference Working Groups Committee

Sherry Benton, tri-chair
Kathy Bieschke, tri-chair
Nancy Elman, tri-chair
Julie Ancis
Lisa Edwards
Megan Marks
Larry Marks
Gunjani Patel-Stamp

Continuing Education Committee

Rod Goodyear, tri-chair
Mark Leach, tri-chair
Susan MacQuiddy, tri-chair
Beverly J. Vandiver

Division 17 Hospitality Suite Committee

Pamela F. Foley, co-chair
Lewis Z. Schlosser, co-chair

Early Career Professionals Committee

Traci Callandrillo, tri-chair
Anne Farrar Anton, tri-chair
Oksana Yakushko, tri-chair
Larisa Buhin
Jones, Janice
Montana, Denise Francis
Metz, AJ
Robitschek, Chris
Sue Whiston, senior advisor

Keynote Speaker Committee

Nadya Fouad, tri-chair
Marie Miville, tri-chair
Karen Taylor, tri-chair

International Committee

Lawrence H. Gerstein, Chair
Changming Duan, Co-Chair
Doriane Besson
Christiane Blanco-Vega
David Blustein
Sharon Bowman
Deniz Canel
Esther Care
PingHwa Chen
Seong-in Choi
Chong-li Chung
Y. Barry Chung

Ayse Ciftci
Michael Ellis
Yuhong He
Shoshana Hellman
Puncky Paul Heppner
Andy Horne
Yueh Ching Hsu
Majeda Humeidan
Anthony Isacco
Changdai Kim
Nicholas Ladany
Georgios Lampropoulos
Michael Y. Lau
Dong-gwi Lee
Justin Li
John McConnell
David Miller
Amina Oezelsel
Shonali Raney
John Romano
Gargi Roysircar-Sodowsky
Donna Schultheiss
Jui Shankar
Mei Tang
Adam Voight
Earlise Ward
Heather Wood

Legislative Advocacy Committee

Laura Palmer, chair

Captains:

Sandra Ackerman
Anne Farrar Anton
Rosie Bingham
Jean Carter
Louise Douce
Jodi Huntington
Bob McPherson
Sandra Shullman
Melba Vasquez

Advisors:

Stephen M. Pfeiffer
Nina Gail Levitt
Peter Newbould

Local Arrangements Committee

Cyndy Boyd, tri-chair
Liz Vera, tri-chair
Suzette Speight, tri-chair
Stacy Frazier
Teresa D. LaFromboise
Charlotte McCloskey
Barb Palombi

Program Committee

Consuelo Arbona, co-chair
Jonathan Schwartz, co-chair

Public Relations & Media Committee

Heidi Zetzer, co-chair
Camille DeBell, co-chair

Secondary Sponsors/Exhibitors Committee

Ed Delgado Romero, co-chair
Carrie Winterowd, co-chair
Kathlyn Dailey
Susan Young

Sections Committee

Alberta Gloria, past chair of section chairs
Lali McCubbins, chair of section chairs
Section Chairs:
Connie Matthews, Advancement of Women
Mary Lou Randour, Animal-Human Interactions
Traci Callandrillo, College and University Counseling Centers
Earlise Ward, Ethnic and Racial Diversity
Cyndy McRae, Health
Pam Cogdal, Independent Practice
Larry Gerstein and Puncky Paul Heppner, International
Jill Barber, Lesbian, Gay and Bisexual
Rod Hetzel, Positive Psychology
Andy Horne, Prevention
Sue Whiston, Promotion of Psychotherapy Science
Lee Nelson, Supervision and Training
Paul Gore, Vocational Psychology

SPAs and Practitioners Committee

Michael Duffy, co-chair
Armand Cerbone, co-chair
Kathleen Chwalisz
Bob McPherson
Karen Settle

Student Committee

Jacqui Smith, co-chair
lore m. dickey, co-chair
Kathlyn Dailey, senior advisor
Cindy Juntunen, senior advisor
Glenna Stumblingbear
Jaryn Allen
Manijeh Badiie
Brittany Barber
Guler Boyraz
LaTisha Braddock
Brittany Barber
Nadia Hasan
Alia Fons-Scheyd
Julie Koch McDonald
Karen Lutter
Kelly Russo
Jessica Thull
Meris Williams

Technology Committee

Paul Gore, chair
Y. Barry Chung

Photographers Committee

Peg Mosher
Mary Heppner

Thursday, March 6, 2008

8:00 AM - 6:00 PM

Registration - 8th Street South, Lobby Level

9:00 AM - 5:00 PM

COUNCIL OF COUNSELING PSYCHOLOGY TRAINING PROGRAMS (CCPTP) MID-WINTER MEETING

9:00am - 11:00am - Training Implications of the Internationalization Movement in Counseling Psychology (Co-Sponsored by the APA Division 17 International Section & CCPTP) - Waldorf

Co-Chairs, Changming Duan, University of Missouri-Kansas City; Cindy Juntunen, University of North Dakota and Lawrence H. Gerstein, Ball State University; Presenters, Puncky Paul Heppner, University of Missouri-Columbia; Li-fei Wang, National Taiwan Normal University, Taipei, Taiwan, R.O.C.; John Romano, University of Minnesota; Sung-Kyung Yoo, Claremont McKenna College; Sif Einarsdóttir, University of Iceland, Reykjavik, Iceland

11:15am to 12:00pm - Business Meeting - Williford C

12:00pm to 1:00pm - Lunch - Normandie Lounge

1:00pm to 4:00pm - Sessions I & II - Williford C

Session I: Practicum training in our academic programs to best prepare students for internship. Session II: Licensure/entrance to practice given recent APA initiatives and some state licensure laws. Both sessions will have a panel consisting of Nadya Fouad, Karen Taylor, Emil Rodolfo, and Roberta Nutt, followed by a breakout session to discuss these topics in small groups.

4:00pm - 5:00pm - Business Meeting - Williford C

APA Division 17 Section Pre-Conference Activities - In Alphabetical Order by Section Name

SECTION FOR THE ADVANCEMENT OF WOMEN

9:00am - 4:00pm -- SAW Mentoring Conference - 4C

The SAW Mentoring Conference will address the complexities of mentoring students, new professionals, and peers. The morning session will feature four speakers addressing diverse aspects of mentoring, followed by a "fishbowl" panel discussion, after which the audience will actively participate. The afternoon session will consist of "Mentoring Circles" whose purpose will be to provide in-depth discussion, mentoring support, and the development of strategies to be brought back to the large group and to SAW to advance its mentoring agenda. Attendees at other section programs with morning-only sessions are welcome to join the afternoon circles.

SECTION ON COLLEGE AND UNIVERSITY COUNSELING CENTERS AND SECTION ON POSITIVE PSYCHOLOGY

1:00pm - 5:00pm -- Strength-Based Approaches to Counseling Practice, Supervision/training, and Outreach in College and University Counseling Centers - Williford A

Interactive program designed primarily for college and university counseling centers but also applicable to various practice settings. The goal for the group is to identify strength-based approaches to three areas of counseling center work: counseling practice, supervision and training, and outreach. Prior to the conference, the planning committee will have accumulated resources for applying these strength-based approaches as well as lists of resources for attendees to pursue. Each attendee will receive a CD with the previously generated materials.

SECTION ON ETHNIC AND RACIAL DIVERSITY AND HEALTH PSYCHOLOGY SECTION

1:30pm - 4:30pm - Health Disparities - Williford B

Carolyn Tucker will address health disparities in the United States. Her research areas include (a) patient-centered culturally sensitive health care assessment and intervention, (b) health and wellness promotion and obesity/overweight modification interventions for racial/ethnic minority and low income children, adolescents, families, and communities, and (c) children's problem behaviors and academic performance. Paschal Kabura, our African guest, is committed to training counselors to address the overwhelming mental health needs in Uganda, a country where citizens are rebuilding their lives following many years of social and political instability.

HEALTH PSYCHOLOGY SECTION 9:30am - 11:30am -- General Meeting - 4A

We will be discussing issues related to section business, APA, suggestions for more involvement of students and new professionals. Everyone is welcome!

INDEPENDENT PRACTICE SECTION AND SECTION ON LESBIAN, GAY, BISEXUAL AWARENESS

9:00am - 4:00pm -- Counseling LGBT Clients and Community: Best Practices - Boulevard B

This workshop presents best practices for working with diverse LGBT populations and in particular; youth (adolescents) along with family issues. Plans are to be didactic as well as participatory bringing in movement/dance and creative approaches. Presentation will also focus on standards of competence and ethics for practitioners.

INTERNATIONAL SECTION

7:30am - 5:00pm - International Section - Waldorf

7:30am - 9:00am International Section Leaders Meeting, Meeting of the Leaders of the International Section: Co-Chairs, Lawrence H. Gerstein, Ph.D., Ball State University, and Puncky Paul Heppner, Ph.D., University of Missouri-Columbia

9:00am - 11:00am Symposium -

Training Implications of the Internationalization Movement in Counseling Psychology (Co-Sponsored by the International Section & CCPTP), Co-Chairs, Changming Duan, University of Missouri-Kansas City, Cindy Juntunen, University of North Dakota, and Lawrence H. Gerstein, Ball State University; Presenters, Puncky Paul Heppner, University of Missouri-Columbia, Li-fei Wang, National Taiwan Normal University, Taipei, Taiwan, R.O.C.; John Romano, University of Minnesota; Sung-Kyung Yoo, Claremont McKenna College; and Sif Einarsdóttir, University of Iceland, Reykjavik, Iceland

11:00am - 12:00pm Symposium - Contemporary Research and Practice of Counseling International Students Chair, Mark Leach, The University of Southern Mississippi; Johanna E. Nilsson, The University of Missouri-Kansas City; Amina Özelsel, Jacobs University Bremen, Germany

12:00pm - 1:00pm Symposium -- Multinational Perspectives on Supervision and Training I, Chair, Georgios Lampropoulos, Florida State University; Yoko Mori, Lehigh University; Arpana G. Inman, Lehigh University; Keeyeon Bang, Korea Digital University, Kyungki-do, Korea

1:00pm - 3:00pm International Section Working Group Leaders Meeting, Meeting of the International Section Working Group Leaders

3:00pm - 4:00pm Symposium -- Embracing Peace Psychology: Counseling Psychologists as Scientist-Practitioners, Chair, Lawrence H. Gerstein, Ball State University;

*Forgiveness Research in South Africa and the United States: Opportunities and Challenges - David N. Dixon, Ball State University, Heather Wood, Ball State University; *Walking Beyond the Violence of the Past: Roles for Counseling Psychologists in Post-conflict Settings - Scott L. Moeschberger, Taylor University; *Traumatization among Former Political Detainees in South Africa - Ashraf Kagee, Stellenbosch University Matieland, South Africa

4:00pm - 5:00pm Roundtable

Discussions - International Students' Social and Information Hour, Roundtable: Co-Chairs, Johanna Nilsson, University of Missouri-Kansas City & Elif Celebi, University of Missouri-Columbia; Tables 1: International Student Visas and Work Visas - Y. Barry Chung, Georgia State University, Mirko Briemle, University of Missouri-Kansas City; Table 2: Getting Involved - in APA, Division 17, and the International Section - Mark Leach, The University of Southern Mississippi, Guler Boyraz, The University of Memphis; Table 3: Mentoring & Support - Johanna Nilsson, University of Missouri-Kansas City, Danah Barazanji, University of Missouri-Kansas City; Table 4: Practicum and Internship - Changming Duan, University of Missouri-Kansas City, Abby Myers, Georgia State University; Table 5: Supervision - Nick Ladany, Lehigh University, Arlette Ngoubene Atioky, Lehigh University; Table 6: Networking - Lynette Bikos, Seattle Pacific University, PeiWei Li, Indiana University; Table 7: Returning Back Home after Being Trained in the U.S. - Rachel Gali Cinamon, Tel Aviv University Ramat Aviv, Israel, Elif Celebi, University of Missouri-Columbia

SECTION ON LESBIAN, GAY, BISEXUAL AWARENESS
1:00pm - 5:00pm -- Working Group: Strategic Planning - PDR 1

This will be a working group for section members to contribute to strategic planning for our section. We will work on mission statement, goals, objectives, and tasks.

PREVENTION SECTION
9:00am -12:00pm -- Teaching the Theory, Science, and Practice of Prevention Training in Psychology - Boulevard C
 Prevention is a core component of counseling psychology yet few programs teach it. This workshop will provide an overview of methods and activities for training graduate students in prevention theory, science, and practice.
1:30pm - 4:30pm -- Prevention Practice:

A Workshop on Prevention Application Programs that have Demonstrated Effectiveness -Boulevard C
 This workshop will present an overview of several prevention programs that have been developed, implemented, and evaluated and found to have positive impact. Funding opportunities will also be discussed.

SECTION FOR THE PROMOTION OF PSYCHOTHERAPY SCIENCE
1:00pm - 5:00pm -- Innovative Strategies to Facilitate Process and Outcome Research: Working with Small Samples - Boulevard A
 Five well-respected researchers will discuss innovative strategies for conducting process and outcome research. After these presentations, participants can select to meet with one of the presenters and other researchers and discuss specific applications of these small N techniques. The presenters are Lynne Angus, Madonna Constantine, Clara Hill, William Hoyt, and Brent Mallinckrodt.

SECTION IN FORMATION: ANIMAL HUMAN INTERACTION: RESEARCH AND PRACTICE
4:00pm - 6:00pm -- Animal Human International Meeting - 4L
 This is a section that is forming. The meeting will give an opportunity for attendees to learn about this section - who we are, what we want to do, what we have started to do. Also, the time and space will allow section members and interested section members to meet one another, exchange ideas, and give direction to AHI as it matures into an established section in SCP.

SOCIETY FOR VOCATIONAL PSYCHOLOGY
9:00am - 5:00pm -- Returning to Our Roots: Toward a Vocational Science of Empowerment - Astoria
 The theme of returning to our roots is related to Frank Parsons and examining current methods for bettering the work lives of the under-resourced and marginalized in the United States and internationally. The preconference workshop

will be a combination of symposiums related to theory and practice and a series of presentations related to pertinent topics in the field of vocational psychology. The symposium related to innovative practices in vocational psychology will feature international scholars.

1:00 PM - 5:00 PM
ACCTA Meeting - 4K

SAS/APAGS Internship Workshop - 4M

This session will be a four hour workshop for graduate students which will help them to prepare for the pre-doc internship application process. Presenters include Carol Williams-Nickelson, counseling psychologist and the Associate Executive Director of the American Psychological Association of Graduate Students (APAGS); W. Gregory Keilin, Internship Training Director and Assistant Director Counseling and Mental Health Center, University of Texas at Austin. Pre-registration required.

Thank You to Our GOLD Sponsors!



National Register of Health Service Providers in Psychology



Our Lady of the Lake University



Pearson Assessments



Sage Publications



Seton Hall University



UNIVERSITY OF OREGON

University of Oregon (Provost's Office and Office of the Dean of College of Education)

OPENING RECEPTION -

International Ballroom South
 Welcome to the 2008 International Counseling Psychology Conference! The opening reception will feature a cash bar and light hors' d'oeuvres.

7:00 PM - 8:30 PM

OPENING SESSION KEYNOTE-

International Ballroom North

Co-chairs: Linda Forrest, University of Oregon, and Laura Palmer, Seton Hall University

Welcome:

Kathlyn Dailey, President, Association of Counseling Center Training Agencies

Carrie Winterowd, Chair, Council of Counseling Psychology Training Programs

Linda Forrest, President, Society of Counseling Psychology, Division 17 of American Psychological Association

Terrence Koller, Executive Director, Illinois Psychological Association

Keynote Address:

The following renowned international scholars will engage in a lively dialogue on global perspectives in counseling psychology practice, training, and research. The distinguished panelists include:

Andrés Consoli, Ph.D., President of the Interamerican Society of Psychology, Professor and Associate Chair in the Department of Counseling, College of Health and Human Services, San Francisco State University, and Visiting Professor in the Department of Psychology at the Universidad del Valle de Guatemala. *Socially Engaged, Strength-Based, Emancipatory Practices and the Americas: An Agenda for Counseling Psychology.*

Nhlanhla Mkhize, Ph.D., Co-Principal Investigator of the South African Research Ethics Training Initiative, Consultant, HIV-Aids Vaccines Ethics Group, and Associate Professor of Psychology at the University of KwaZulu-Natal, South Africa. *Speaking Together: Incorporating Indigenous Perspectives in Counseling Psychology.*

M. Eduarda Duarte, Ph.D., Chair of the Portuguese Psychological Society, Professor, Faculty of Psychology and Education, Director of the Human Resources Psychology Master Program, and Co-Research Director of Career Guidance and Development of Human Resources Unit Research, University of Lisbon. *Anticipating the Future in Counseling Psychology.*

Li-fei Wang, Ph.D., President of the Division of Counseling Psychology, Chinese Guidance and Counseling Association in Taiwan and Professor at the National Taiwan Normal University, Taiwan. *What I Have Learned from the Development of Taiwan Counseling Psychology.*



Andrés Consoli, Ph.D.



M. Eduarda Duarte, Ph.D.



Nhlanhla Mkhize, Ph.D.



Li-fei Wang, Ph.D.

2008 Distinguished Contributions to the International Advancement of the Counseling Profession Award

Presented by Changming Duan, Lawrence H. Gerstein, Puncky Paul Heppner to the award winners:

- Raoul Van Esbroeck, Vrije University, Belgium
- Jean Guichard, University of Paris, France
- Kay Hyon Kim, Seoul National University, South Korea
- S. Alvin Leung, University of Hong Kong
- Salvatore Soresi, University of Padua, Italy,
- Li-fei Wang, National Taiwan Normal University, Taiwan

FRIDAY, MARCH 7

Friday, March 7, 2008

7:30 AM - 5:00 PM

Registration - 8th Street South, Lobby Level

8:00 AM - 9:30 AM

FRIDAY KEYNOTE ADDRESS - International Ballroom North



Sandra (Sandy) Shullman, Ph.D., Managing Partner of the Columbus office of the Executive Development Group, an international leadership development and consulting firm.

Introduced by Karen M. Taylor, Ohio State University

Many Faces of Counseling Awards
Presented by Charlie Waehler, Tri-chair, ICPC Awards and Recognition Committee

Exhibits/Posters - International Ballroom South

9:30 AM - 5:00 PM

Exhibit hall opens! Enjoy exhibits and posters throughout the day.

10:00 AM - 11:50 AM

Working Groups

Pre-registration required.

Advancement and Enrichment of Counseling Psychology in International Settings - Boulevard B

Chairs: Mei Tang, University of Cincinnati; Mingyi Qian, Peking University, China; Fuming Fan, Tsinghua University, China

Applications of the Integrative Training Model - 5D

Chairs: Marie L. Miville, Teachers College, Columbia University; Changming Duan, University of Missouri - Kansas City

Best Practice Guidelines on Prevention for Psychologists - 4G

Chairs: Sally M. Hage, University at Albany; John L. Romano, University of Minnesota; Maureen Kenny, Boston College

Counseling Psychologists as Change Agents: Tomorrow's Role Today - Boulevard C

Chairs: Fred J. Dorn, University of Mississippi; John Krumboltz, Stanford University; W. Bruce Walsh, Ohio State University

Counseling Psychology and Board Certification - 5I

Chairs: Ted Stachowiak, Texas A&M University; Charme Davidson, Independent Practice; Dave Welch, Retired; Steve Eichel, Independent Practice

Creating Options: Addressing Counseling Psychology Students' Therapy Needs - 4H

Chairs: Maggie L. Syme, University of Kansas; Debra Mollen, Texas Woman's University; Selby M. Conrad, University of Kansas; Melinda Key-Roberts, University of Kansas

Creating the Future: Practicing Feminist/Multicultural Therapy in a Conservative Environment - PDR1

Chairs: Emma Mansour, University of Utah; Elizabeth Gosset, University of Utah; William Elder, University of Utah; Lynette Averill, University of Utah; Sue Morrow, University of Utah

Cross Border Collaboration in North American Counseling Psychology - 5J

Chair: Beth E. Haverkamp, University of British Columbia, Canada

Crossing Borders: International Research and Teaching Alliances in Counseling Psychology - 4A

Chairs: Mary Sean O'Halloran, University of Northern Colorado; Catherine Phillips, University of Northern Colorado

Defining Unique Competencies in Counseling Health Psychology - 4M

Chairs: Donald R. Nicholas, Ball State University; Marilyn Stern, Virginia Commonwealth University; Nicole Borges, Wright State University; Sara Maltzman, County of San Diego Child Welfare Services

Developmental Milestones in Multicultural Competency: Integrative Training and Outcome Based Assessments - 4L

Chairs: Michael Mobley, University of Missouri - Columbia; William Ming Liu, University of Iowa; Rebecca L. Toporek, San Francisco State University; Traci Callandrillo, American University; Stacey M. Pearson, University of Michigan; Angela M. Soth McNett, University of Missouri - Columbia

Immigration - 4C

Chairs: Oksana Yakushko, University of Nebraska - Lincoln; Maria Prendes-Lintel, For Immigrants and Refugees Surviving Torture Project

Internationalizing Counseling Psychology: Challenges, Opportunities, and Strategic Planning - Williford B

Chairs: Lawrence H. Gerstein, Ball State University; Puncy Paul Heppner, University of Missouri - Columbia

Maximizing Training Continuity and Trainee Competence: Creating a Shared Vision Between Academic Training Staff and Internships - 5B

Chairs: Sherry Benton, University of Florida; Carrie Winterowd, Oklahoma State University

Mentoring and Orientation Programs for International Students in Counseling Psychology Programs - 4K

Chairs: Jeeseon Park; Pius Nyutu, University of Texas, Austin; Julie Conrath, Southern Illinois University; MinJung Helen Doh, Pennsylvania State University; Marco Gemignani, Duquene University

Psychological Practice with Women and Girls: Global Perspectives - 4D

Chairs: Carolyn Zerbe Enns, Cornell College; Sayaka Machizawa, Chicago School of Professional Psychology

Responding to Hate in Institutions of Higher Education - 4E

Chairs: Roger L. Worthington, University of Missouri - Columbia; Amy Reynolds, University of Buffalo

Retaining and Advancing Counseling Psychology Students of Color - PDR4

Chairs: Konjit V. Page, University of North Dakota; Edward Delgado-Romero, University of Georgia; Maryam Jernigan, Boston College; Guerda Nicolas, Boston College

Training Models in Counseling Psychology - 4B

Chair: Greg J. Neimeyer, University of Florida

Working Group on Transgender Concerns - Boulevard A

Chairs: lore m. dickey, University of North Dakota; Anneliese Singh, University of Georgia; Pearl S. Chang, University of Georgia

Vocational Psychology at the Crossroads: Mapping New Directions - 4F

Chairs: David L. Blustein, Boston College; Nadya A. Fouad, University of Wisconsin - Milwaukee

10:00 AM - NOON

Continuing Education Workshops

Pre-registration required.

Advocating for Counseling Psychology in Federal Legislation: Overcoming Obstacles and Gaining Opportunities - McCormick Boardroom

Nina Levitt, Ph.D, APA Education Government Relations Office
Sheila Forsyth, Ph.D., APA Education Government Relations Office

Cognitive Processing Therapy in the Global War on Terror - Williford A

Christopher B. Gates, Ph.D.
Behavioral Health Department, 10th Mountain Division, United States Army

Ethical and Licensure Issues for Practitioners and Trainers - Williford C

Roberta Nutt, Ph.D., Association of State and Provincial Psychology Boards
Emil Rodolfa, Ph.D., University of California - Davis

Older Men: Increasing Understanding for Researchers and Practitioners-Astoria

Tammi Vacha-Haase, Ph.D., Colorado State University
Stephen R. Wester, Ph.D., University of Wisconsin - Milwaukee
Heidi Fowell Christianson, University of Wisconsin - Milwaukee

Self Harm: Context, Assessment, and Intervention - Waldorf

Cindy M. Bruns, Ph.D., Texas Woman's University
Denise Lucero-Miller, Ph.D., Texas Woman's University

12:05 PM - 12:55 PM

Psychology International: Organizational and Individual Perspectives from the APA Committee on International Relations - Williford C

Chair: Stephen M. Quintana, Chair, APA Committee on International Relations

Presentations: *APA's International Agenda: CIRP, GOALS and the Office of International Affairs*. Merry Bullock, Senior Director, Office of International Affairs, American Psychological Association; *CIRP's Role in Raising Consciousness and Supporting International Collaborations*. Carolyn Zerbe Enns, Member, APA Committee on International Relations; *A Counseling Psychologist's Involvement in CIRP and International Research*. Stephen M. Quintana, University of Wisconsin-Madison

NOON to 1:00 PM

STU Student Speed Mentoring Event - 4E, 4F, 4G, 4H

Pre-registration required.

Confirmed mentors include Shane Lopez, University of Kansas; Melba Vasquez, Independent practice; Jim Lichtenberg, University of Kansas; Laura Palmer, Seton Hall University; Lawrence H. Gerstein, Ball State University; Derald Wing Sue, Columbia University; Bill Parham, John F. Kennedy University; Lisa Edwards, Marquette University; Oksana Yakushko, University of Nebraska- Lincoln; Puncy Paul Heppner, University of Missouri - Columbia; Carrie Winterowd, Oklahoma State University; Jean Carter, Washington Psychological Center; Barry Chung, Georgia State University; Janet Helms, Boston College; Linda Forrest, University of Oregon; Eve Adams, New Mexico State University; Teresa D. LaFromboise, Stanford University; Joe White, University of California, Irvine; John Gonzalez, University of Alaska Fairbanks

1:00 PM - 1:50 PM

Poster Sessions Track I - Mental Health and Individual Differences --

International Ballroom South

An Empirical Examination of a Feminist Therapy Group Intervention.

FRIDAY, MARCH 7

Sonya Kyrsten Bettendorf, Ann Fischer, Southern Illinois University - P1

Body Image and Body Self-consciousness in College Women. Lesli Johnson, Oklahoma State University - P2

A Literature Review: How Body Image and Cancer Interact to Influence Psychological Adjustment. Sarah Jenkins, Nazar Seyala, John Meteer, Ball State University - P3

Hip Hop and Sex: Exploring the Salience of a Sexual Scripting Model for Women of African Descent. Jasmine Ross, M. Nicole Coleman, University of Houston - P4

Gender Differences in the Reduction of Posttraumatic Stress Disorder: Symptoms in a Group Treatment. Vivian Joy Dzedzora, Colleen Haney, University of British Columbia, Canada - P5

Implications for Fostering Resiliency in Male Survivors of Sexual Abuse. Tierra Ortiz-Rodriguez, George Sackllah, Brittany Thorne, R. John Sutherland, University of Houston - P6

Summary of Gender and Forgiveness: A Meta-Analytic View. Andrea Jayne Miller, Everett Worthington Jr., Michael McDaniel, Virginia Commonwealth University - P7

When Sex Hurts: Couples' Experiences of Female Sexual Pain. Natalie Hansen, Marla Buchanan, University of British Columbia, Canada - P8

Masculinity, Internalized Heterosexism, and Sexuality Minority Men's Distress. Dawn Szymanski, Erika Carr, University of Tennessee-Knoxville - P9

Women's Identities and Welfare-to-Work. Alexandra Kenna, Boston College - P10

Personality and Resilience in College Females. Megan Cole, Colorado State University - P11

Seeking Professional Help for an Eating Disorder. Ashley Hackler, David Vogel, Nathaniel Wade, Iowa State University - P12

Families, Depression, and Disordered Eating. Annette Kluck, Auburn University - P13

Religiosity, Acculturation, Gender and Latino/a Adolescent Sexual Activity. Lisa Edwards, Keyona Jarrett, Richard Fehring, Kristin Haglund, Marquette University - P14

The Effects of Models on State Body Satisfaction. Julie Wren, Ball State University; Helen Harton, University of Northern Iowa; Natalie Wren, Saint Ambrose University - P15

Prior Maternal Control and Adolescent Competence Predict Bulimia. Nicole Godinez, Elizabeth Blodgett Salafia, Dawn Gondoli, Michaela Bucchianeri, Alexandra Corning, University of Notre Dame - P16

Adolescent Dieting: Parental and Peer Approval as Predictors. Jessica Badger, Dawn Gondoli, Alexandra Corning, Michaela Bucchianeri, Elizabeth Blodgett Salafia, University of Notre Dame - P17

The Link Between Adolescent Heterosocial Involvement and Dieting. Ellen Fitzsimmons, Dawn Gondoli, Alexandra Corning, Michaela Bucchianeri, Elizabeth Blodgett Salafia, University of Notre Dame - P18

Change in Eating Disorder Symptoms in College Women. Kelly Berg, Pat Frazier, Laura Sherr, University of Minnesota - P19

Self-Compassion and Emotional Eating. Sarah Hastings, Emily Maschauer, John Snyder, Radford University - P20

The Relationship between Feminist Identity and Sexuality. Martha Bergen, Debra Mollen, Texas Women's University - P21

Challenging the Western Dichotomous View of Gender Identity. Peter Economou, Marika Maris, Seton Hall University - P22

Employment and Gender Role Attitudes in Latinas. Patricia Martinez, Sherry Wang, Oksana Yakushko, University of Nebraska - P23

Predictors of Body Image and Body Image Self-Consciousness. Carrie Winterowd, Lesli Johnson, Neila Reeves, Barb Terral, Wendy Sims, Melodee Garst, Oklahoma State University - P24

An Investigation of Predictors of Bulimia Nervosa. Karen Pfost, Nona Philippe-Albrecht, Daniel Santangelo, Esther Anderson, Illinois State University - P25

Contributors to Disordered Eating Among Collegiate Women Athletes. Jill Mallin, University of Wisconsin-Whitewater; Linda Subich, University of Akron - P26

Motivation to Control Prejudiced Response Towards Rape Victims. Erin Currie, University of Utah - P27

Sexual Identity and Eating Disorders: A New Perspective. Ashlee Brown, Julianna Harris, Texas Tech University; Annette Kluck, Auburn University; Sheila Garos, Erin McCrory, Texas Tech University - P28

Group Intervention for Body Image Disturbances. Jessica Meyer, Deborah Renard, University of Wisconsin-Milwaukee - P29

Binge Eating in Ethnically Diverse Obese Adolescents. Clarice Gerke, Eastern State Hospital; Suzanne Mazzeo, Marilyn Stern, Virginia Commonwealth University - P30

Relationship between Adolescent Sexual Bullying and Physical Attractiveness. Matthew Taylor, Michael Whitten, Katheryn Eder, Nancy DeLaney, Nancy Cunningham, University of Louisville - P31

Socialization Experiences of African American and Latina Girls. Anita Thomas, Denada Hoxha, Corey Steele, Jason Hacker, Xioyan Fan, Loyola University Chicago - P32

Behavioral Activation: An Innovative Treatment for Latinos with Depression. Azara Santiago-Rivera, Roseanne Illes, William Reyes, Talia DeRose, Gregory Benson, University of Wisconsin-Milwaukee - P33

Psychology and Torture: Reciprocal Influences. Joel Hartong, Nicole Baugher, Ball State University - P34

Attachment and Stress on College Adjustment in Students from Blended and Intact Families. Jennifer Lancaster, University of Oklahoma - P35

Ethnicity, Societal Standards, and Male Body Image. Debbie Grammas, University of Houston - P36

Asian International Students: Attachment and Academic Success. Suejung Han, Mary Carole Pistole, Purdue University - P37

Students' Experience With A Graduate Student Group. Eric A. VandeVoorde, Purdue University - P38

Counseling Needs of Creative Individuals. Barbara Kerr, University of Kansas - P39

Effects of Career Counseling on Career Engagement of Creative Students. Robyn McKay, University of Missouri; Thomas Krieschok, University of Kansas - P40

Visualization of Futures for Creative Students. Eric Shult, University of Kansas - P41

Flow Experiences of Creative Students. Kirsten Wells, David Martin, University of Kansas - P42

Factor Analyses of Vocational, Personality, and Values Scales of Creative Students. Danny Hammond, Ryan Hansen University of Kansas - P43

Real Men. Really Depressed: Efficacy of Male-Targeted Depression Awareness Brochures. Joseph Hammer, University of Missouri Columbia - P44

1:00 PM - 1:50 PM

Training in Counseling Psychology Roundtables - Waldorf

Roundtable One

Early Career Professionals' Experiences of Teaching Multicultural Courses. Debra Mollen, Texas Woman's University

Roundtable Two

From Student to Professional: Successfully Navigating the Process. Nima Patel, Kelly Neville, Kenneth T. Wang, University of Illinois at Urbana-Champaign

Roundtable Three

Training Psychologists for Today's University and College Counseling Centers. Martha Dennis Christiansen, Arizona State University; Gregory T. Eells, Cornell University; Dan Jones, Appalachian State University

Roundtable Four

Updating Clinical Training Facilities:

Challenges and Strategies. Claire J. Dandeneau, Indiana University of Pennsylvania; Lorraine J. Guth, Indiana University of Pennsylvania

Roundtable Five

Current Movement of Counseling Psychology in Taiwan and Its Impact on Training and Practice of Counseling Professionals. Chi-Ping Deng, National Changhua University of Education, Taiwan; Ting-Kao Lien, Far East University, Taiwan

Roundtable Six

Counseling Psychology Graduate Training Intersects with Social Justice. Doris Kirkpatrick, Michael O'Heron, Elizabeth Sellers, Erin Snyder and Lawrence H. Gerstein, Ball State University

Roundtable Seven

The Pre-doctoral Internship: A Training Ground for Social Justice. Corinne Datchi-Phillips, Indiana University; Lisa Ades, University of Maryland; Wendi Tai, Indiana University

Roundtable Eight

The Training Needs for Psychological Counselor in Saudi Arabia. Mohammad Jamalallail, Umm Al-Qura University, Saudi Arabia

Roundtable Nine

Enhancing Multicultural Competence: Lessons from Summers in Mexico. Carrie Castaneda-Sound, Monte Bobele; Joan Biever, Karri Zumwalt and Aaron Castillo, Our Lady of the Lake University

1:00 PM - 1:50 PM

Symposia

SCI, EDUAdvances in Training and Supervision of Counselors and Psychotherapists - Williford A

Chair: Clara E. Hill, University of Maryland
Presentations: *Helping Skills*

Training for Novice Therapists. Clara E. Hill, University of Maryland; *Preparing Students to Embrace Uncertainty While Searching for Certainty.* Thomas M. Skovholt, University of Minnesota; *The Supervisory Relationship.* Mary Lee Nelson, University of Wisconsin-Madison; *When Supervision Fails: The Dark Side of Supervision.* Nicholas Ladany, Lehigh University

SCI, INT **Building International Research Teams: Issues, Opportunities, and Challenges** - Boulevard C
Chairs: Robert W. Lent, University of Maryland; Lawrence H. Gerstein, Ball State University
Presentations: *Crossing the Atlantic: Iceland - US Collaboration.* Stefania Ægisdóttir, Ball State University; Sif Einarsdóttir, University of Iceland, Reykjavik, Iceland; *Social Cognitive Theory and Career Development: Italian - US Collaboration.* Laura Nota and Salvatore Soresi, Università degli Studi di Padova, Italy; Steven D. Brown, Loyola University Chicago; *Cross-Cultural Research Collaboration between Taiwan and US: Benefits and Challenges.* Lifei Wang, National Taiwan University; Puncky Paul Heppner, University of Missouri-Columbia

Contextual Influences in Vocational Psychology: A Three Dimensional Model - Boulevard B
Chair: Nadya A. Fouad, University of Wisconsin-Milwaukee
Presentations: *Contextual Factors in Vocational Psychology: Intersections of Individual, Group, and Societal Dimensions.* Neeta Kantamneni, University of Wisconsin-Milwaukee; Nadya A. Fouad, University of Wisconsin-Milwaukee; *Using Narrative Approach to Address Contextual Factors in Career Development.* Y. Barry Chung, Georgia State University; Franco Dispenza, Georgia State University; *Societal Constraints & Individual Resources in the Career Development*

of Youth of Color in Poverty. Matthew A. Diemer, Michigan State University; *Contextual Factors in Career Counseling: A Look at Practice.* Mary Fitzpatrick, University of Wisconsin-Milwaukee; Kristin M. Vespia, University of Wisconsin-Green Bay
Discussant: Nadya A. Fouad, University of Wisconsin-Milwaukee

ECP **Conversation Hour for ECPs with Society's Leadership** - Williford B
Chair: Oksana Yakushko University of Nebraska-Lincoln
Presentations: Linda Forrest, University of Oregon; William Parham, JFK University; Janet Helms, Boston University; Lali McCubbin, Washington State University; Stephen Cook, Texas Tech University

CRESMET's Virtual Counseling Center: Counseling Psychology Responding to National Priorities in a Global Society - 4L
Chair: John J. Horan, Arizona State University
Presentations: *Career Assessment Utilizing New Technology.* Terence J. G. Tracey, Arizona State University; *Provision of Career Information in a New Age.* Dominic Prime, Nathan White, and Sean P. Horan, Arizona State University; *Research on Academic and Life Skill Programming in the VCC.* Sharon Bell, Kristine Goto, Brian Garbarini, and Bridget Seeley, Arizona State University; *The Future of the Virtual Counseling Center.* John J. Horan, Arizona State University

INT **HIV/AIDS and Africa: Counseling Strategies and Issues** - 4M
Chair: Johanna Nilsson, University of Missouri-Kansas City
Presentations: *The Challenges and Rewards of Working with HIV/AIDS in Southern Africa.* Rex Stockton, Indiana University; *Socio-behavioural Aspects of HIV Vaccine Trial Enrollment.* Ashraf Kagee, Stellenbosch University, South Africa

STU **How to Succeed in Counseling Psychology: A Panel Discussion with Diverse Counseling Psychologists** - International Ballroom North
Chairs: Brittany Barber, Marquette University; Glenna Stumblingbear, Oklahoma State University; Alia Fons-Scheyd, University of Miami
Presentations: Melba Vasquez, Anderson House at Heritage Square; Tammi Vacha-Haase, Colorado State University; Lawrence H. Gerstein, Ball State University

Impact Factor and Journal Publishing - 4C
Chair: Elizabeth Altmaier, Associate Editor, *The Counseling Psychologist*
Presentation: Bob Howard, Executive Editor, Social Sciences Journals, SAGE Publications

International Perspectives: Challenges for Women Work/Family Balance - PDR 1
Chair: V. Scott Solberg, University of Wisconsin - Madison
Presentations: *Anticipating Work-Family Conflict and Facilitation: Differential Effects for Women Seeking Careers in Science versus Social Science.* Rachel Gali Cinamon, Tel Aviv University, Israel; *Use of Concept Mapping to Identify Korean Women's Experiences Associated with Career Interruption.* Yoon-Jung Choi, Seoul National University, Seoul Korea; *Multinational Study of Women's Anticipated Challenges in Balancing Work and Family Roles and Health.* Wendy Close, Wisconsin Lutheran College - Milwaukee; Rachel Gali Cinamon, Tel Aviv University, Israel; Janice Jones, Cardinal Stritch University - Glendale; V. Scott Solberg, University of Wisconsin - Madison; Kimberly A.S. Howard, University of Wisconsin - Madison

INT **Multinational Perspectives on Supervision and Training II** - PDR 4
Co-Chair: Youngkyun You, Yonsei University, Korea; Georgios Lampropoulos, Florida State University

DIV **Principles and Applications of Community Engagement: Case Study of the Society for Counseling Psychology** -- 4D

Chair: Eve Adams, New Mexico State University
Presentations: Michael Mobley, University of Missouri, Columbia; Rebecca Toporek, San Francisco State University

Training for a Changing World: Student Scientist-Practitioners - Williford C

Chair: Kathleen Chwalisz, Southern Illinois University, Carbondale, IL
Presentations: *Weaving Science Throughout an Adolescent Career Exploration Program*. Sarah A. Miller, & Jane Swanson; *Assisting Rural Caregivers from a Scientist-Practitioner Perspective*. Kayla M. Hand, Kathryn Rimstad Anjuli Amin, & Kathleen Chwalisz; *Scientist-Practitioner Integration within a Multicultural Context*. Vinetha Belur, Anna Matyja, Frances C. Shen, & Yu-Wei Wang; *Scientist-Practitioner Experiences in a Career Counseling Training Clinic*. Donna LaBarge, Charles Hees, & Patrick Rottinghaus, Southern Illinois University

Research Paper Presentations

Career and Work Issues - 4B

Chair: Ruth Fassinger, University of Maryland
Presentations: *The Investigation of Self-Efficacy of Working Adolescents*. Ezgi Denizel Guven, Pamukkale University, Turkey; Kamil Orhan, Pamukkale University, Turkey; *Personality and the Career Commitment Process*. Leili Jin, University of Hong Kong, China; David Watkins, University of Hong Kong, China; Mantak Yuen University of Hong Kong, China; *Masculinity and*

Work Relationships in Norway and Turkey. Elin Ovrebo, University of Memphis; Suzanne H. Lease, University of Memphis; Ayse Ciftci, Purdue University; Guler Boyraz, University of Memphis; *Research Training Environment-Research Interest Relationship*. Eric Demeer, University at Albany, State University of New York; Matthew P. Martens, University of Memphis.

1:00 PM - 3:00 PM

Continuing Education Workshops

Pre-registration required.

Evidenced Based Practice in Psychology - McCormick Boardroom

Lynn Bufka, Ph.D.
American Psychological Association
Practice, Research, and Policy

Future of Gender: Therapeutic Skills for Transgender Clients - 4K

Carmen Cruz, Psy.D., Texas Woman's University
Heather Aidala, Psy.D., Texas Woman's University

Politically Based Trauma: Implications for Counseling Psychologists - 4A

Nouriman Ghahary, Ph.D.
Liberty Health - Jersey City Medical Center

1:00 PM - 5:00 PM

Continuing Education Workshops

Pre-registration required.

Psychotherapy With Older Adults -

Boulevard A
Michael Duffy, Ph.D.
Texas A & M University

Working With International College Students - Astoria

Anita McLean, Psy.D., Princeton University
Susan Young, Ph.D., Ohio University
Mack S. Bowers, Ph.D., Georgia

Institute of Technology; Tanya I. Razzhavaikina, Ph.D., University of Nebraska - Lincoln; Mary A. Fukuyama, Ph.D., University of Florida; Carol Yoken, Ph.D., University of Cincinnati; Jeanne E. Manese, Ph.D., University of California - Irvine; Chun-Chung Choi, Ph.D., University of Florida

2:00 PM - 2:50 PM

Poster Sessions Track II - Professional and Training Issues - International Ballroom South

Supervision with International Trainees. Yoko Mori, Arpana Inman, Lehigh University - P1

Training Helping Professionals in Self-Care through Mindfulness to Prevent Burnout. Sandy Newsome, Virginia Longoria, Michael Waldo, New Mexico State University - P2

Emergency Caregivers: The Psychological Experience. Allison Bitz, University of Nebraska-Lincoln - P3

Ethical Compliance of Online Marriage and Family Therapists: A Comparison of Psychologists and Counselors. Holly Elizabeth Gage, Elizabeth Reynolds Welfel, Cleveland State University - P4

Photo-Elicitation: Providing a Voice for Those Who Often Go Unheard. Anita Wells, Kakali Bhattacharya, University of Memphis - P5

Work's Relation to Suicide and Depression: Are Clinicians Missing the Link? Daryn Rahardja, Indiana University - P6

Changes in Therapy Outcome Predictors. Jeana Magyar-Moe, University of Wisconsin-Stevens Point - P7

Life Transitions and Predoctoral Psychology Interns. Stephanie San

Miguel Bauman, Washington State University; Cindy Juntunen, University of North Dakota; Erinn Larsen, Erin Landry, Washington State University - P8

Substance Use Treatment Training. Michael Madson, University of Southern Mississippi; Angela Bethea, St. Luke's-Roosevelt Hospital Center; Samantha Daniel, University of Memphis; Heather Necaie, University of Southern Mississippi - P9

Multicultural Competence and Training Environments. Angela Krumm, San Jose State University; Rufus Gonzales, DePaul University; Heather Peters, University of Minnesota-Morris; Kensa Gunter, Georgia State University; Karen Paez, Sharon Zygowicz, Kristee Haggins, University of California-Davis - P10

Exploring Good Work in the Counseling Profession. Anna Bartone, Elizabeth Coursen, University at Buffalo - P11

Women's Decision-making Regarding Promotion to Full Professor. Nathan Pruitt, Lynn Catlin, Adanna Johnson, Sarah Knox, Marquette University - P12

British Trainees Responses to Personal Development Requirements. Naomi Moller, Katrina Alilovic, University of the West of England, Great Britain - P13

Sort-of Attractive, Female and Older: British Counselor Preferences. Naomi Moller, Victoria Taylor, University of the West of England, Great Britain - P14

Multicultural Supervisor Competency Indicator. Grace Fowziyyah Muhammad Buchanan, Chicago State University - P15

Study on the Components of the Solution-Focused Supervision. Wei-Su Hsu, National Taiwan Normal

University, Taiwan; So-Tyan Melody Sun, Lan Yang Institute of Technology, Taiwan - P16

Relational Cultural Theory (RCT) Based Supervision. Julie Davis, Amy Cavanaugh, Western Michigan University; Karyn Boatwright, Kalamzoo College; Bridget Nolan, Western Michigan University; Emily Yeagley, University of Akron - P17

Counseling Psychologists Facing a Diverse and International Clientele. Hsiu-Lan Cheng, Johanna Soet, Todd Sevig, University of Michigan - P18

Psychometric Properties of the Beliefs About Psychological Services. Hongying Chen, Stefania Aegisdottir, Ball State University - P19

Infusing Globalization into Training in Counseling Psychology. Camille DeBell, Jessica Rhoads, Meladee Garst, Kimberly Burdine, Oklahoma State University - P20

Student Perspectives on Training Future Social Justice Agents. Cynthia Chen, Kristin Wieneke, Christine Catraio, Carlton Green, Angela Borges, Boston College - P21

Positive and Negative Multicultural Supervision: A Task Analysis. Katherine Chwalisz, Southern Illinois University Carbondale; Nima Patel, University of Illinois at Urbana-Champaign; Serena Chu, Southern Illinois University Carbondale - P22

The Impact of Supervisor Apology on Supervisee Perceptions. David Smothers, Wisconsin School of Professional Psychology; Terri Jashinsky, Melissa Kraemer Smothers, University of Wisconsin-Milwaukee; Paul Priester, Cardinal Stritch University - P23

HIV/AIDS Related Group Counseling in Botswana: Trainee Attitudes. Peiwei

Li, Amanda Voils-Levenda, Indiana University - P24

African American Counseling Psychology Doctoral Students. Adanna Johnson, University of Houston; Alan Burkard, Nathan Pruitt, Marquette University; Lynn Catlin, 7Cs Community Counseling Clinic - P25

We, Us, Ours: The Role of a Counseling Psychologist in Advocacy. Laura Richard Marshall, Deborah Renard, University of Wisconsin-Milwaukee - P26

University Counseling Center Assessment. Kendra Saunders, Millersville University - P27

Professional Self Image of Palestinian Graduates. Rasmiyah Hanoun, An-Najah National University, West Bank - P28

Controlled Clinical Trial of Marriage Enrichment. Everett Worthington, Virginia Commonwealth University - P29

Conceptualization of Counseling and Personal and Social Problems. Ladislav Valach, University of Zurich, Switzerland; Richard Young, University of British Columbia, Canada - P30

What Shakes Your Tree. Stillman Jacquard, University of British Columbia, Canada - P31

Medical Model Influence in Counseling Psychology. Aaron Jackson, Dallas Jensen, Brigham Young University - P32

Discourse Analysis of Collaborative Practices. Olga Sutherland, University of Calgary, Canada - P33

Counseling Psychologists in Rural Practice. Sarah Hastings, Amy Burns, Mandy Sanderson, Alia Zaro, Radford University - P34

Balance of Supervisor Emphasis:

Research Implications for Supervision Training. Debra Ainbinder, Lynn University; M. Sylvia Fernandez, Barry University - P35

The Development and Implementation of Clinical and Counseling Psychology Registration System. Mingyi Qian, Jie Zhong, Ping Yao, Kaiweng Xu, Peking University, China - P36

Counseling Black Male Clients as a Female Therapist. Christina Jackson-Bailey, Adler School of Psychology - P37

Counselors Telling Their Professional Story. Shoshana Hellman, University of Wisconsin-Madison; Rachel Gali Cinamon, Tel Aviv University, Israel - P38

Multi-Method Competence and Counseling Psychologists. Megan MacNamara, John Richardson, Erika Carr, Tripti Bhaskar, Mark Hector, University of Tennessee - P39

Positive and Problematic Multiple Relationships in School Counseling. Julie Koch, Kay Herting Wahl, University of Minnesota-Twin Cities - P40

A Year of School Counseling Research: Challenges & Opportunities. Julie Koch, Kay Herting Wahl, University of Minnesota-Twin Cities - P41

Influence of Acculturation Strategies on Counseling Psychology Graduate/Professional Training: Trainee Perspectives. Vinetha Belur, Anjali Amin, Frances Shen, Julia Conrath, Sheetal Shah, Southern Illinois University Carbondale - P42

Spiritual and Religious Beliefs of Counseling Psychologists. Sally Hage, SUNY at Albany; Matthew Siegel, Debbie-Ann Chambers, Teachers College, Columbia University - P43
Continuing Education: Perceptions and

Practices Among Seasoned Psychotherapists. Greg Neimeyer, Danny Phillip, and Jennifer Taylor, University of Florida - P44

General Constructs and Approaches in Implementing Counseling Based Programs: Keys to Promoting Success. Adam M. Volungis, Indiana University - P45

The Ethics of Self-Care in Psychology Graduate Training Programs. Valerie Ignatenko, West Virginia University - P46

The Working Alliance in Supervision: Theoretical and Practical Considerations for Improved Supervision Relationships. Michelle J. Trotter, Sandra Singer, University of Minnesota - P47

Using Motivational Interviewing as a Supervisory Approach: Theory and Application. Shirley A. Hodges, Alayna Speed, Michael Madson, Emily E. Bullock, University of Southern Mississippi - P48

Toward a Greater Understanding of Group Supervision Process: A Grounded Theory Model. Shuko Fujisake, Jon A. Glass, Susan L. Toner, Linda M. Fleming, Gannon University - P49

Data, Experiences, and Proposals for Predoctoral Training in Counseling Integration. Georgios K. Lampropoulos, Florida State University - P50

2:00 PM - 2:50 PM

International and Multicultural Roundtables - Waldorf

Roundtable One
Go International? A Primer on How To. Andres Consoli, San Francisco State University; Maria del Pilar Grazioso, Universidad del Valle, Guatemala;

Marisela Lopez, Universidad del Valle, Guatemala

Roundtable Two

Addressing the Needs of International Students through Groups. Yuhong He, University of Missouri-Columbia; Hung Chiao, University of Missouri-Columbia; Taleb Khairallah, University of Missouri-Columbia, Adipat Chaichanasakul, University of Missouri-Columbia; Catherine Hsieh, University of Missouri-Columbia

Roundtable Three

Generation NeXt and Intercultural Consciousness: Challenges and Opportunities. Nicole C. Cox, Illinois State University; Kim A. Hays, Illinois State University

Roundtable Four

From Personal to Professional Interactions: How Much Do We Really Know about the Unique Needs of International Students in the U.S.? Chi-Ping Deng, National Changhua University of Education, Taiwan; Eunha Kim, Penn State University

Roundtable Five

Multicultural Counseling with International Students. Nancy Arthur, University of Calgary, Canada

Roundtable Six

Students' Experiences With Multicultural Training: Past, Present, Future. Eric A. VandeVoorde, Purdue University; Silvia Donatelli, Purdue University

Roundtable Seven

New Developments in Clinical Work and Scholarship with Immigrants and Refugees. Oksana Yakushko, University of Nebraska; Alejandro Morales, University of Nebraska; Manijeh Badiiee, University of Nebraska; Soumya Maddabhusi, University of Nebraska; Sherry Wang, University of Nebraska

Roundtable Eight

Trauma and Domestic Violence (DV): Are Immigrants Different? Norma Ortega, Penn State University; Nataly Woollett, American Art Therapy Association

Roundtable Nine

Strategies for Research with Religious Minority Populations. Innocent Okozi, Seton Hall University; Nancy Hammoudah, Western Michigan University; Ben Beitin, Seton Hall University; Amanda Lienau, Alfred University; Arpana Inman, Lehigh University

Roundtable Ten

Cultural Tailoring of Psychosocial Research Measures. Donna Baptiste, University of Illinois at Chicago; Charu Thakral, University of Illinois at Chicago; Chisina Kapungu, University of Illinois at Chicago

2:00 PM - 2:50 PM

Symposia

Adult Attachment and Interpersonal Problems: Sharpening the Focus -

Conference 4C

Chair: Frederick G. Lopez, University of Houston

Presentations: *Contributions of Parental and Adult Attachment Security to Interpersonal Problems.* Frederick G. Lopez, University of Houston; *Correlates of Psychological Abuse Perpetration in College Dating Relationships.* Barbara A. Gormley, Georgia State University; *Patterns of Male Interpersonal Violence: A Latent Regression Class Analysis.* Anne Marie Mauricio, Arizona State University
Discussant: M. Carole Pistole, Purdue University

SCI Advancing Psychotherapy Process and Outcome Research: Current Status and Future Directions - 4L

Chair: Susan Lonborg, Central

Washington University

Presentations: *Can't We All Just Get Along?: The State of the Art in Family Therapy Research.* Micki Friedlander, University of Albany/SUNY; *What Do We Know About Insight in Psychotherapy?* Clara Hill, University of Maryland; *Strengths-Based Psychotherapy: Current Status and Future Directions.* Mike Scheel, University of Nebraska at Lincoln; *Collie Conoley, University of California at Santa Barbara; Vocational Process and Outcome Research: Understanding the Prevalence of Work Issues.* Sue Whiston, Indiana University-Bloomington

ECP Conversation with State Psychology Boards: Updates on New Developments for Early Career Psychologists -

Williford C

Chair: Larisa Buhin, Chicago School of Professional Psychology

Presentations: Glenn Good, Missouri State Psychology Licensing Board; Bobbie Celeste, Ohio State Psychology Licensing Board; Roberta Nutt, Texas State Psychology Licensing Board

Graduate Psychology Education Grants in Counseling Psychology Programs -

4M

Chair: Eve M. Adams, New Mexico State University

Presentations: *Training Counseling Psychologists to Provide Services to the Elderly.* Tammi Vacha-Haase, Ph.D., Colorado State University; *Collaborative Training in Geropsychology for Rural Elders.* Cindy Juntunen, University of North Dakota; *Training with Underserved Populations Through Primary Care Practica.* Stephen W. Cook & Lee M Cohen, Texas Tech University; *Primary Care Behavioral Health Training on the U.S.- Mexico Border.* Eve M. Adams & Kay E. Ennis, New Mexico State University
Discussant: Len T. Sperry, Florida Atlantic University

INT Improving Mentoring of International and Ethnic Minority Students -

B

Chair: Richard Suinn, Colorado State University

Presentations: *MentoringMminority or ADHD Undergraduates: A Skills Approach.* Geraldine Markel University of Michigan; *Cultural Beliefs of International Students: Demands on Mentoring Style?* Roger Tweed Kwantlen, University College, Canada; *Meeting Mentoring Needs of Iinternational Students Studying Abroad: A Personal Perspective.* Tatia Mei Chun Lee University of Hong Kong, China; *Minority Graduate Student's Personal Views and Advice on Mentoring: A National Survey.* Harriette Wimms, University of Maryland

EDU Learning from the Tragedies: Basic Lessons of Crisis Management from Columbine to Virginia Tech -

International Ballroom North

Chair: Greg Brack, Georgia State University

Presentations: *Basics of Crisis Management for Those in the Helping Professions.* Greg Brack, Georgia State University; *Crisis Management Specifics for Those in Supervisory and Leadership Positions.* Michelle Hill North, Georgia College and State University

INT National Policy and Practice for Counseling Youth in Korea --

4D

Chair: Li-Fei Wang, National Taiwan Normal University, Taiwan

Presentations: Chang Dai Kim, Seoul National University, South Korea; Young Soon Kim, Chung-nam Youth Counseling Center and Han Counseling Association; Hanna Choi, Incheon Youth Counseling Center

Strategies for Higher Education Institutions to Support International Students -

Williford A

Chair: Sayaka Machizawa, The Chicago School of Professional Psychology

Presentations: *Needs Assessment of International Students.* Sayaka Machizawa, The Chicago School of

Professional Psychology; *Program Development for Support of International Students*. Kayoko Hayashi, The Chicago School of Professional Psychology; *"From Shanghai to Chicago --- Studying, Living, and Experiencing."* Jie Qian, The Chicago School of Professional Psychology. Discussant: Michael Smith, The Chicago School of Professional Psychology

DIV **The Many Faces of Privilege: Strategies for Research, Practice, Training, and Advocacy** - Williford B Chair: Tania Israel, University of California, Santa Barbara
Presentation: Anneliese Singh, University of Georgia; William Liu, University of Iowa; Lewis Schlosser, Seton Hall University; Janie Pinterits, University of North Dakota; Pam Remer, University of Kentucky

EDU **The Role of Counseling Psychology in Cross-disciplinary Education and Training** - Boulevard C Chairs: Linda Campbell, The University of Georgia; Cindy Juntunen, The University of North Dakota
Presentations: *Counseling Psychologists in Medical Education: Roles, Opportunities and Challenges*. Nicole Borges, Wright State University; *Counseling Psychology in Health Administration, Public Policy and University Consultation*. Louise Douce, The Ohio State University; *Multicultural Counseling Psychology Research and Practice in Higher Education*. Roger Worthington, University of Missouri-Columbia

Twenty Years of the Minnesota International Counseling Institute: Dreams and Realities - PDR 1
Chair: Michael Goh, University of Minnesota
Presentations: *Evolution of the MICI: Tracing the Path Across 20 Years*. John Romano, University of Minnesota; *MICI Guiding Principles*. Tom Skovholt, University of Minnesota; *Working with Multicultural Teams at the*

MICI. Kay Thomas, University of Minnesota
Discussants: Moshe Israelashvili, Tel Aviv University, Israel; Sung-Kyung Yoo, Ewha Women's University, Korea

3:00 PM - 3:50 PM

Poster Sessions Track III - Vocational Psychology and Educational Issues - International Ballroom South

Exploration of Factors Perceived to Influence Present and Future Success of McNair Scholars. Claudia Veronica Porras, Enedelia Saucedo, Eboney Patrice Crawford, Sue Jacobs, Oklahoma State University - P1

The Employability of Inmates using Social Cognitive Career Theory. Femina Varghese, Erin Hardin, Robert Morgan, Texas Tech University - P2

University Graduating Students' Career Search Behaviors and Outcome: Self-Efficacy, Goals, and Attachment. Chia-Chi (Alicia) Hu, M. Carole Pistole, Kevin Kelly, Purdue University - P3

Concurrent and Predictive Validity of Rank Ordered Strong Interest Inventory Occupational Scale Scores. Brandy Eldridge, Bryan Dik, Colorado State University; Jo-Ida Hansen, University of Minnesota - P4

The Flip Side of Holland-type congruence: Incongruence and job satisfaction. Samantha Strife, Bryan Dik, Colorado State University; Jo-Ida Hansen, University of Minnesota - P5

Integrating Interests and Abilities: Differences in Standardized Tests and Self-Estimates. Sarah Fetter Anthony, Patrick Armstrong, Iowa State University - P6

Proactive Coping, Work Hope, and Career Planfulness: A Mediation Model in Domestic and International Students.

J. Juana Wu, Virginia Commonwealth University - P7

U.S. Immigrants' Vocational Development: Perceived Contextual Supports and Barriers. Gina Prendes- Lintel Furr, Krista Chronister, University of Oregon - P8

Development of the Engineering Values Scale. Gregory Essig, Purdue University - P9

Reasons for Choosing a Correction Officer Career. Christopher Sbaratta, Lewis Schlosser, David Safran, Seton Hall University - P10

The Use of Ego Identity Theory in Career Development Research: A Meta-Analysis. Wendi Tai, Indiana University - P11

Attachment, Social Supports, and Career Decision Self-efficacy: A Literature Review. L. Kay Webb, Kristin Perrone, Ball State University - P12

Self-Other Agreement for Career-Relevant Constructs. Margaret Nauta, Illinois State University - P13

Social Cognitive Factors of Gifted Adults. Kristin Perrone, Ball State University; Vance Jackson, Green Mountain College; Stephen Wright, Tracy Ksiazak, Ball State University - P14

Effectiveness of a Career Course on Career Decision-making. Nadya A. Hepp, Liz Cotter, Neeta Kantamneni, Brian Altman, Yung- Lung Chen, University of Wisconsin-Milwaukee - P15

Differences in Work Values Across Generations. Melanie Leuty, Jo-Ida Hansen, University of Minnesota - P16

Influence of Self-Beliefs on Academic Persistence Decisions. Sarah Dixon,

Sharon Robinson Kurpius, Marybeth Rigali-Oiler, Arizona State University - P17

Personality Predictors of Accountants' Career Satisfaction. Jacob Levy, University of Tennessee - P18

Conceptions of Working in Elementary and Middle School Children. Laura Nota, Lea Ferrari, Salvatore Soresi, University of Padua, Italy; Donna Schultheiss, Cleveland State University - P19

Career Indecision and Anxiety in College Students. Steve Caloudas, Adrienne Anderson, Consuelo Arbona, University of Houston - P20

Gender and Career Development Projects in Young Adulthood. Jose F. Domene, Krista Socholotiuk, Trinity Western University, Canada - P21

Family Influence on Career Development: Instrument Development and Validation. Nadya A. Fouad, Yung-Lung Chen, Brian Altman, Steve Bernfeld, Laura Carter, University of Wisconsin-Milwaukee - P22

Gender Differences and Methodological Effects in Interest Measures. Wyndolyn Allison, Heath Schechinger, Patrick Armstrong, Iowa State University - P23

Meta-Analysis of SCCT Choice Model: A SEM Approach. Hung-Bin Sheu, Arizona State University; Robert Lent, University of Maryland; Matthew Miller, SUNY at Albany; Kelly Hennessy, University of Delaware; Ryan Duffy, University of Maryland - P24

Career Aspirations of African-American College Students. Danielle Johnson, Christian Vargas, Karen Multon, University of Kansas; Marie Hammond, Tennessee State University - P25

Cognitive and Emotional Antecedents of Chronic Career Indecision. Kevin Kelly, Yun-Jeong Shin, Purdue University - P26

Examining Nontraditional Interests in a Changing Vocational World. Donna LaBarge, Patrick Rottinghaus, Southern Illinois University Carbondale - P27

Measuring Job Search Self-efficacy: Research and Practice Implications. Susan Lonborg, Jeff Christianson, Jon Ingram, Cody Foster, Dan Neighbors, Central Washington University - P28

A Vocational Profile of First Year International Students. Ryan Duffy, Margaretha Lucas, University of Maryland - P29

Changes in Self-Esteem after Early Entrance to College. Samuel Shepard, Alissa Doobay, Jan Warren, Megan Foley Nicpon, University of Iowa - P30

Relationships Among Alcohol Use, Career Indecision, and Coping. Rachel Reader, Margaret Nauta, Karen Pfof, Illinois State University - P31

The Career Dilemmas Questionnaire: A Cognitive Developmental Approach. Maria Jorge Ferro, Joaquim Ferreira, Eduardo Santos, University of Coimbra, Portugal - P32

Perceptions of the Impact of School Climate on Student Learning. Mary Walsh, Jillian DePaul, Kristin Wieneke, Boston College - P33

Perceptions of Students Strengths and Assets and their Contribution to Student Learning. Jillian DePaul, Mary Walsh, Meghan Pugach, Boston College - P34
Contextual Influences on Urban Adolescent Career Development. Christine Catraio, Maureen Kenny, Boston College - P35

Changing Views of Intelligence: Effects on Career Exploration. Erin Hardin,

Tanecia Blue, Andrew Friedman, Texas Tech University - P36

At-Risk Urban Middle-School Students' Career-Related Success\Learning Experiences. Margo Jackson, Carl Fengler, Daphne McCampbell, Claudia Perolini, Aisha Holder, Fordham University - P37

Validating the Structure of the CDSES-SF with Chinese College Students. Kerrin Roy, Matthew Miller, Andrew Kerlow-Myers, SUNY at Albany - P38

Relation of Depression and Affect to Career-Related Constructs. Nicholas Jenkins, Amanda Jantzer, Patrick Rottinghaus, Southern Illinois University Carbondale - P39

Family Influences on African American Career Development. Vicki Campbell, University of North Texas; Rebecca Bergen, Gersten Center; C. Edward Watkins, Jr., Lawrence Schneider, University of North Texas - P40

Challenges Facing Nontraditional Graduate Students. Innocent Okozi, Karlene Ferron, Seton Hall University - P41

Information Needs of Filipino Executives. Joyce Mondejar-Dy, University of Asia and the Pacific, Philippines - P42

Gender Differences in Directly and Indirectly Elicited Preferred Occupations. Itamar Gati, Reuma Gadassi, Hebrew University, Israel - P43

The Investigation of the Dynamics of School Dropout. Cem Kirazolu, Maltepe University, Turkey - P44

Career Assessment for a Web Able Platform. Maria Jorge Ferro, Joaquim Armando Ferreira, Eduardo Ribeiro Santos, University of Coimbra, Portugal - P45

Career Indecision among Hispanic College Students. Danya Serrano, Consuelo Arbona, University of Houston - P46

Education Satisfaction among International Graduate Students. Mei-Chuan Wang, Fayetteville State University; Teresa Hartnett, University of Memphis; Pius Nyutu, University of Texas at Austin - P47

A Measure of School Climate with Early Elementary Children. Julie Koch, Kay Herting Wahl, University of Minnesota-Twin Cities - P48

Agriscience Education Self-Efficacy of New Zealand High School Students. Levon Esters, Iowa State University - P49

Career Coaching - Practice Issues: If You Build It, Who Will Come? Tricia Woodman, University of Memphis - P50

3:00 PM - 3:50 PM

Symposia

[INT]Challenges/Supports to Adolescent Career Development Across Borders - 4L

Chair: Sherri Turner, University of Minnesota Presentations: *Challenges/Supports to Adolescent Career Development in U.S. Urban Areas.* Sherri Turner, University of Minnesota; *Chilean Adolescent Educational, Work, and Career Challenges.* Ellen Hawley McWhirter and Benedict T. McWhirter, University of Oregon; Jesus Redondo, Universidad de Chile; *Challenges to Implementing Career Interventions with Diverse Rural High School Students.* Saba Rasheed Ali, University of Iowa; *Examining Career Exploration in at Risk Israeli Youth.* Rachel Gali Cinamon, Tel Aviv University, Israel

Discussant: Lisa Flores, University of Missouri-Columbia

[SCI]Counseling Health Psychology: Past, Present, and Future - 4B

Chair: Brian Lewis, University of Miami Presentations: Marilyn Stern and Suzanne Mazzeo, Virginia Commonwealth University; Tom Merluzzi, Notre Dame University; Kathie Chwalisz, Southern Illinois University

Implementing the "Guidelines for Psychological Practice with Girls and Women" in Training, Research and Practice - Boulevard C

Chair: Connie R. Matthews, Consultant/Trainer, State College, PA Presentations: *Challenges and Inspirations of the Guidelines for Clinical Practice.* Pamela R. Remer, The University of Kentucky; *Infusing the "Guidelines for Psychological Practice with Girls and Women" in Education and Training in Psychology.* Y. Barry Chung, Georgia State University; *Implementing "The Guidelines for Psychological Practice with Girls and Women:" The Role of Research.* Dawn Szymanski, The University of Tennessee Discussant: Sue Morrow. The University of Utah

[EDU]Internship Supply and Demand: Perspectives from the Education and Training Spectrum - Waldorf

Chairs: Karen M. Taylor, Ohio State University; Jeff Baker, University of Texas Medical Branch Presentations: Catherine Grus, Associate Executive Director for Professional Education and Training, American Psychological Association; Emil Rodolfa, University of California, Davis; Cindy Juntunen, University of North Dakota

[INT]Multicultural Issues Around the Globe: International Perspectives on Multiculturalism - 4D

Chair: Jeeseon Park, McGill University, Canada

Presentations: *Multicultural Counseling Issues in Taiwan.* Yu-Wei Wang, Southern Illinois University at Carbondale, Shu-Ping Lin Gouverneur Hospital; *Ethnic Diversity and Multicultural Counseling Concerns in the Former USSR.* Oksana Yakushko, University of Nebraska at Lincoln; *Applying ADDRESSING Model to Counseling Issues in South Korea.* Oksana Yakushko University of Nebraska-Lincoln, Keeyeon Bang Korea Digital University, South Korea, Jeeseon Park, McGill University, Canada; *Cultural Pluralism in Canada: Implications for Research, Training, and Practice in Counseling Psychology.* Jeeseon Park McGill University, Canada, Ben C.H. Kuo, University of Windsor, Julie Irving McGill University, Canada, Kaori Wada McGill University, Canada

[ECP]Navigating the Pathway: Developing a Career as a Counseling Psychologist - Williford B

Chairs: Traci Callandrillo, American University; Chris Robitschek Texas Tech University Presentations: *Career Pathways as a Counseling Center Psychologist.* Traci Callandrillo American University; *Careers Pathways as a Career Center Counseling Psychologist.* Briana Keller, University of Washington-Seattle; *Career Pathways of an Academic Counseling Psychologists.* Chris Robitschek, Texas Tech University; *Career Pathways within Independent Practice and VA Hospitals.* Tiffany Sanford-Martens, Memphis VA

[PRA]Practice Keynote: A Report on National Practice and Advocacy Issues - Williford A

Chair: Armand Cerbone, Howard Brown Health Center, Chicago, IL Presentations: Carol D. Goodheart, Private Practice, Princeton, New Jersey

Retirement Transitions: Visions for Baby Boomers and Beyond - 4A

Chair: Nancy S. Elman, University of Pittsburgh
Presentations: *Discovering New Paths in a World of Opportunities*. Jaquie Resnick, University of Florida; *The Forks in the Road: In Search of a Diverse Menu*. J. Manny Casas, University of California, Santa Barbara; *Fifty Years in the Counseling Field and Still Running*. Allen E. Ivey, Microtraining Associates, Inc.; *Back to Basics*. Dorothy Nevill, University of Florida

STUSAS and APAGS Leaders: Updates and Opportunities for Involvement - Williford C

Chair: Jaryn Allen, University of North Dakota
Presentations: Emilia Boesch, University of North Dakota; Jessica Semler, University of North Dakota; Colleen Johnson, University of North Dakota; Nadia Hasan, The University of Akron; Michael Madson, University of Southern Mississippi; Carol Williams-Nickelson, American Psychological Association; Konjit Page, University of North Dakota; Kristi Van Sickle; APAGS Past-Chair

Research Paper Presentations

Depression and Suicide - 4C

Chair: John Westefeld, University of Iowa
Presentations: *Youth Suicidal Tendencies in Iran*. Susan Sahami, Islamic Azad University, Iran, Siamak Khodarahimi, Islamic Azad University, Iran; *Reasons for Living and Suicidal Ideation among Arab Adolescents*. Moshe Israelashvili, Tel Aviv University, Israel, Helen Kakunda-Mualem, Tel Aviv University, Israel; *Preventing Depression Among Urban African American Children*. Keith Herman, University of Missouri Columbia, Sharon F. Lambert, George Washington University, Wendy M. Reinke, University of Missouri-Columbia, Nicholas Ialongo, Johns Hopkins

University; *Hope, Perfectionism, and Depression in Middle School Students*. Jeffrey Ashby, Georgia State University, Christina Miner, Georgia State University, Lydia Canty, Georgia State University, Wendy L. Dickinson GROW Counseling, Kenneth B. Matheny, Georgia State University

Gender and Couples/Family Issues - Boulevard B

Chair: Glenn Good, University of Missouri
Presentations: *Gender Ideology and Entitlement as Predictors of Anger Management*. Ryon McDermott University of Houston, Max Nisenbaum University of Houston, Jonathan Schwartz University of Houston; *Perceptions of Gender in Turkey, India and the US*. David Tager University of Missouri, Vishal K. Gupta University of Nebraska, Germine Awad University of Texas- Austin; *Counseling Men Who Have Sex with Men*. Pandya Apurva, University of Baroda, India; *Level of Marital Satisfaction among Fertile Working and Non-Working Females*. Muhammas Azam Tahir University of Balochistan, Pakistan, Shaista Mushtaq Bahuddin Zikrya University, Pakistan

3:00 PM - 4:50 PM

DIV Advances in the Study of Diversity: Race/Ethnicity, Gender, and Sexual Orientation - 4K

Chairs: Robert W. Lent, University of Maryland; Elizabeth Vera, Loyola University Chicago
Presentations: Stephen M. Quintana, University of Wisconsin, Madison; Ruth E. Fassinger, University of Maryland; Roberta L. Nutt, Association of State and Provincial Psychology Boards

PRA Crisis Intervention on Campus: Strategies and Lessons from VTU -

International Ballroom North
Chair: Karen Settle, Southern Methodist University
Presentations: Sherry Benton, University

of Florida; Chris Flynn, Virginia Tech University

Practical Strategies for Teaching Social Justice - PDR 1

Chair: Rick Weinberg, University of South Florida, Louis de la Parte Florida Mental Health Institute
Presentations: *Bringing Social Justice/Community Welfare to Internship Training*. Rick Weinberg, University of South Florida, Louis de la Parte Florida Mental Health Institute; *Training Students in Domestic Violence/Social Justice*. M. Meghan Davidson, University of Nebraska - Lincoln; *Teaching Social Justice in a Psychology Graduate Program*. Susan R. Torres-Harding Roosevelt University; Steven A. Meyers Roosevelt University; *Social Justice and Advocacy: A Graduate Student Perspective*. Amina Mahmood, University of South Florida, Louis de la Parte Florida, Mental Health Institute
Discussant: Elizabeth M. Vera, Loyola University-Chicago

Religion and Spirituality's Future in Counseling Psychology - 4M

Chair: Everett L. Worthington, Jr., Virginia Commonwealth University
Presentations: *The Future of Religion and Spirituality within Professional and Organizational Psychology*. Stephen Cook, Texas Tech University; *Students' Perspectives on the Training for Religion and Spirituality in Counseling Psychology Programs*. Yu-Wei Wang, Southern Illinois University-Carbondale; *Religion and Spirituality as a Pathway to the Study of Virtues and a Target for Positive Psychology Research*. Everett L. Worthington, Jr., Virginia Commonwealth University; *Relational Spirituality and Intercultural Development: An Emerging Integration*. Steven J. Sandage, Bethel University; *Change in Spirituality and Religiosity Following Traumatic Events*. Patricia Frazier, Samantha Anders, Margaret Gavian, Sulani Perera, and Sheila Frankfort, University of Minnesota and

the Prospective Trauma Study Team; *Collaborating with the African American Church to Address Minority Disaster Mental Health Disparities*. Jamie Aten, University of Southern Mississippi
Discussant: Stanton L. Jones, Wheaton College

4:00 PM - 4:50 PM

Poster Sessions Track IV - International
- International Ballroom South

Examining Internalization of Beauty Ideals in Women International Students from India: A Pilot Study. Jennifer Lovell, Ruchi Brahmachari, Southern Illinois University Carbondale -- P1

Women's Career Development in Mainland China: Cultural Context, Practice, and Research Implications. Yuhong He, University of Missouri-Columbia - P2

The Structure of the Career Beliefs Inventory on a Sample of Italian High School Students. Timothy Hess, Terence Tracey, Arizona State University; Salvatore Soresi, Laura Nota, University of Padua, Italy - P3

College Adjustment and Well-Being: First Generation College Student and Immigrant Child Dual Status. Silvia Donatelli, Ayse Ciftci, Purdue University - P4

Counseling Approach to Asian International Students. Megumi Omonishi, Georgia State University - P5

Counseling Psychologists' Role in Serving International Students. Wendi Tai, Daryn Rahardja, Indiana University - P6

Psychological Ramifications of the Asian Tsunami in Sri Lanka: A Cultural Analysis. Sulani Perera, University of Minnesota - P7

Immigration and Onset of Disability: Understanding the Implications for

Counseling Psychologists. Azadeh Ghaffari, Ayse Ciftci, Purdue University - P8

Reconciliation and Emotional Healing Among Ex-Combatants in Northern Ireland. Sarah Stebbe, Travis Booth, Jenny Gallagher, Scott Moeschberger, Taylor University - P9

Social Justice in Tanzania, Africa. Geoff Bathje, University of Georgia - P10

International Student Adjustment: A Follow Up to Intra/Interpersonal Factors That Predict Better Outcomes. Tanecia Blue, Erin Hardin, Texas Tech University - P11

Advocacy & Outreach in Southern Africa: Using Critical Consciousness to Engage in Social Justice. Rachael Goodman, Cirecie West-Olatunji, Sejal Mehta, University of Florida - P12

Stress, Coping Efficacy, and Quality of Life in a Diverse International Student Population. Julia Annika Conrath, Yu-Wei Wang, Southern Illinois University Carbondale - P13

Vicarious Traumatization, Self-Care, and Organizational Support for College Counselors in Taiwan: Examining Moderating Effects. Feng-feng Hu, Ling Tung University, Taiwan; Wei-Su Hsu, National Taiwan Normal University, Taiwan; Yu-Wei Wang, Southern Illinois University at Carbondale - P14

Group Categorizations and Attitudes Regarding Intergroup Forgiveness and Guilt Assignment. Heather Wood, David Dixon, Ball State University - P15

Mental Health Services in Romanian Schools. Marius Dan, Ohio University; Michael Stevens, Illinois State University; Viorela Coanda, Nicolae

Simonide Elementary-Middle School, Romania; Julie Sarno Owens, Ohio University - P16

Cross-Cultural Adaptation in London. Rebecca Hansen, Ball State University - P17

Grief and Posttraumatic Growth in Turkish and American Populations. Guler Boyraz, Thomas Sayger, University of Memphis - P18

Personality, Positive Affect, in Bereaved Turkish Individuals. Guler Boyraz, Thomas Sayger, University of Memphis - P19

Interventions to Promote Forgiveness in the Philippines. Don Davis, Virginia Commonwealth University - P20

Psychotherapists in Korea and United States. Eunha Kim, Penn State University - P21

Predictors of Mental Health in Vietnamese and Somali Refugee Women. Codi Schale, Danah Barazanji, Rachel Linnemeyer, Emily Russell, Johanna Nilsson, Chrisanthia Brown, University of Missouri-Kansas City - P22

Perfectionism, Stress and Coping Style in Chinese College Students. Juan Tian, Ao Hong, Higher Education Press of China, China - P23

Construction and Clinical Application of Japanese Boundary Questionnaire. Emi Kodama, Kyushu Lutheran College, Japan - P24

Perceived Parental Control between Arab and Puerto Rican Parents. Adrienne Anderson, Steve Caloudas, Consuelo Arbona, University of Houston - P25

Psychology and Torture: Reciprocal Influences. Joel Hartong, Ball State University - P26

Interpersonal Problems of International University Students in Japan. Satoshi Takamatsu, Fukuoka, Japan - P27

First-year Adaptation of International Missionaries and Humanitarian Worker. Lynette Bikos, Michael Klemens, Renee Gibbs, Seattle Pacific University - P28

Experiences of International Korean Youths Studying in America. Paul Youngbin Kim, University of Notre Dame - P29

Behavioral and Emotional Difficulties of International Adoptees in Iceland. Bjorg Sigridur Hermannsdottir, Ball State University - P30

A Helpseeking Profile of International Students. Beth Klingaman, Cristina Risco, William Sedlacek, University of Maryland - P31

Idyllic Beauty Characteristics' Effect on International Student Self-Esteem. Natasha Gardner, Lydia Odenat, Georgia State University; Shelarese Ruffin, Harvard University; Tameka Atkins, Meghumi Omonishi, Georgia State University - P32

Korean College Student Attitudes and Beliefs About Psychological Services. Seong-In Choi, Michigan State University; Stefania Aegisdottir, Ball State University - P33

Perfectionism and School Performance among Students in Hong Kong. Michael Mobley, Adipat Chaichanasakul, Reid Trotter, Rohini Puri, Krystle Smith, University of Missouri-Columbia - P34

A Comprehensive Model in Working with International Students. Sarah Rangel, Jenny Lee, Juan Ramirez, Washington State University - P35

NEO-FFI Personality Dimensions and Perfectionism among Indians. Rohini Puri, Michael Mobley, Reid Trotter, Adipat Chaichanasakul, University of Missouri Columbia; B. R. Shejwal, University of Pune, India - P36

Resilience and Coping Resources among Asylum Seeking Survivors of Genocide and War. Lydia Odenat, Jess Kordansky, Georgia State University; Wendy Heath-Gainer, Atlanta, Georgia - P37

International Men of Misery: Male-Depression Brochure Efficacy. Joseph Hugh Hammer, University of Missouri-Columbia - P38

Community Involvement and Psychological Well-being of International Families. Deborah Wiese, Yessenia Manzo, Daichi Hirata, Whitman College - P39

Impact of Media Coverage of Iraq on Iraqi Expatriates. Hajera Rostam, University of British Columbia, Canada - P40

Challenges in Community Promotion Health: Intergenerational Instant Noodle Eating Habit. Rahaju Soerjantini, Sri Wahyuningsih, University of Surabaya, Indonesia - P41

Emotional Intelligence Among Adolescents: Indian Perspective. Shivani Khurana, Amity University, India - P42

Psychological Perspective and Universal Application of Bhagwad Gita. Abha Singh, Pooja Chadda, Amity University, India - P43

Needs Assessment of Nikkei Elderly. Sayaka Machizawa, Chicago School of Professional Psychology; Denys Lau, Northwestern University; Jean Fujii, Japanese American Service Committee - P44

Effects of Seven-Day Osho Dynamic Study Protocol. Avni Vyas, Psychological Passages, Inc., Irving, TX - P45

International Reliability Study of Engagement with Beauty Scale. Timothy Richel, Washington State University; Rhett Diessner, Lewis-Clark State College; Jamak Merchi, Baha'i Institute of Higher Education, Iran; Isabella Dachs, Lewis-Clark State College/Memmingen, Germany; David Addison, American Samoa Community College, American Samoa - P46

The Meaningful Life in Japan and the United States. Michael Steger, Jennifer Burnett, Natalie Pickering, Joo-Yeon Shin, Caroline Young, University of Louisville - P47

Liberation Psychology as a Framework to Address Health. Dorienna Alfred, Thomandra Sam, Auburn University; Renee Middleton, Ohio University - P48

Process and Impact of Forgiveness in South Africa. Amy Owen, Ashley A. Kaseroff, Jennifer L. Krug, Maigenete Mengesha, and Chul Park, University of Wisconsin-Madison - P49

Forgiveness and Emotional Well-Being in South Africa. Amy Owen, University of Wisconsin-Madison - P50

4:00 PM - 4:50 PM

Symposia

Counseling (and) Psychology in Europe: Examples from Iceland, Sweden, and Greece - 4L

Chair: Stefania Aegisdottir, Ball State University

Presentations: *Counseling and Counseling Psychology in Iceland.* Stefania Aegisdottir, Ball State University; Sif Einarsdottir, University of Iceland, Iceland; *Psychology in Swede.* Johanna E. Nilsson, University of Missouri-Kansas City; Thomas Lindgren,

Karolinska Institutet, Sweden;
Counseling in Greece. Georgios K.
 Lampropoulos, Florida State University;
 Anastassios Stalikas, Panteion University
 of Social and Political Sciences, Athens,
 Greece

Counseling Psychologists as Federal Policy Experts and Advocates - 4A

Chair: Diane L. Elmore Public Interest
 Government Relations Office, American
 Psychological Association
 Presentations: *Psychology and Public
 Policy: One Counseling Psychologist's
 Journey*. Diane L. Elmore, Public
 Interest Government Relations Office,
 American Psychological Association;
*Political Advocacy: A Necessary
 Competency for Counseling Psychology*.
 Laura Palmer, Seton Hall University;
*Counseling Psychology's Role in Federal
 Advocacy*. Louise A. Douce, Ohio State
 University

ECP Counseling Psychologists Developing Community Based and Human Rights Organizations - Williford C

Chairs: Denise Montano, Edgewood
 College; Oksana Yakushko, University
 of Nebraska-Lincoln
 Presentations: *For Immigrants and
 Refugees Surviving Torture Project:
 How to Build a Multicultural Services
 Center*. Maria Prendes-Lintel; *MOSAIC:
 How to Create a Local Human Rights
 Organization*. Sharon Horne, University
 of Memphis; *Building ACCESS: How to
 Develop a Community-based Program
 for Women Experiencing Violence*.
 Krista Chronister, University of Oregon

EDU Creating a Social Justice Focus in the Counseling Psychology Curriculum -- Boulevard C

Chair: Eve Adams, New Mexico State
 University
 Presentations: *What is Social Justice?
 Reflection and Action in Training*.
 Benedict T. McWhirter and Ellen
 Hawley McWhirter, University of
 Oregon; *What Kind of Psychologists Do*

We Want Our Students to Become?
 Suzette L. Speight, Loyola University
 Chicago; *Social Justice Advocacy
 Training through the First Year
 Experience*. Maureen Kenny, Boston
 College; *Social Justice in the Heartland*.
 Sharon L. Bowman, Ball State
 University; *Cultivating Counseling
 Psychology's Prevention and Social
 Justice Roots*. Eve Adams, Michael
 Waldo, Rachel Navarro and Lisa
 Grayshield, New Mexico State University

ECP Experiences of Early Career Psychologists Involved in Professional Leadership - Williford A

Chair: Nathan Grant Smith, Texas
 Woman's University
 Presentations: *Navigating and Interacting
 with the APA Organizational Structure
 as a Student and Early Career
 Psychologist*. Michael B. Madson,
 University of Southern Mississippi;
*Leadership Through the Sections:
 Finding a Professional Family in
 Counseling Psychology*. Laurie "Lali"
 McCubbin, Washington State University;
*Becoming a Leader: Integrating
 Professional Service into Professional
 Identity as an Early Career Psychologist*.
 Nathan Grant Smith, Texas Woman's
 University; *From Eager Grad Student to
 Over-involved Post-ECP*. James L.
 Werth, Jr., Radford University
 Discussant: Ruperto M. Perez, Georgia
 Institute of Technology

Goals in Action: Integrating Positive Psychology, Training, and Social Justice on Campus - PDR 4

Chair: Danny Singley, The University of
 California, San Diego
 Presentations: *Working the University
 System to Address the Needs of At Risk
 and Underrepresented Students*. Jeanne
 Manese, The University of California,
 Irvine; *Facilitating Social Justice
 Outreach on Campus*. Derek K.
 Iwamoto, Alliant International
 University-Los Angeles; *Goals in Action:
 Well-Being Research on Campus*.
 Danny Singley, The University of

California, San Diego
 Discussant: Alberta Gloria, University of
 Wisconsin, Madison; Claytie Davis III,
 University of California, Berkeley

PRA The Counseling Psychologist and Psychopharmacology: Prescribing in New Mexico - 4B

Chair: Elaine LeVine, New Mexico
 State University

Suicide: Assessment, Treatment, and Prevention - Waldorf

Chair: Shana Markle Ball State
 University
 Presentations: *Suicide Assessment*.
 Aimee Prater and Jane Roskowski, Ball
 State University; *Treatment of Suicidal
 Behaviors*. Shana Markle and Aarika
 Vannatter, Ball State University; *Suicide
 Prevention*. Kasee Matters, The Chicago
 School of Professional Psychology,
 Angela Heinzman, Ball State University
 Discussant: Robin Lett, Ball State
 University

4:00 PM - 5:50 PM

Looking to the Future: Thoughts from Division 17 Past Presidents - Williford B

Chair: Jean A. Carter, Private Practice,
 Washington, DC
 Presentations: John D. Krumboltz,
 Stanford University; Allen Ivey,
 University of Massachusetts; Jo Ida
 Hansen, University of Minnesota; Bruce
 Walsh, Ohio State University; Nadya A.
 Fouad, University of Wisconsin,
 Milwaukee; Puncy Paul Heppner,
 University of Missouri

Multicultural Competency Training Needs of African American Graduate Students - 4D

Chair: Karen McCurtis Witherspoon,
 Chicago State University
 Presentations: *The Integration of
 Multicultural Theory and Practice in
 Practica and Internship*. Francine
 Bellamy, Chicago State University; *Racial
 Identity Development and Implications
 for Multicultural Counseling*

Competency. Alesia Williams Richardson, Chicago State University; *Culturally Competent Crisis Intervention*. Jacqueline Conley, Chicago State University; *Multicultural Counseling Competency and Assessment Instruments*. Grace Buchanan, Chicago State University; *Multicultural Training Competency in Forensic Settings*. Paula M. Mitchell, Chicago State University
Discussant: Karen McCurtis
Witherspoon, Chicago State University

Parents and Transitions in Adolescence and Early Adulthood - Boulevard B

Chair: Richard A. Young, University of British Columbia, Canada
Presentations: *Family and the Meaning of Work: Is There a Connection?* Filomena Parada and Joaquim Luis Coimbra University of Porto Portugal; *The Transition to Adulthood: Illuminating and Describing Parents' Personal Challenges*. Anat Zaidman-Zait, Sheila K. Marshall, Richard A. Young, Corinne Logan, & Celine C. S. Lee, University of British Columbia, Canada; *Parents and Adolescents Constructing Career Trajectories in Uncertain Times*. Carlos M. Gonzales and Joaquim Luis Coimbra, University of Porto, Portugal; *Growing-up Joint Projects of Urban-residing Aboriginal Families in Canada*. Sheila K. Marshall. University of British Columbia, Canada
Discussant: Natalee Popadiuk

5:00 PM - 5:50 PM

Symposia

A Once and Future Psychologist: The Past, Present, and Future of Counseling Psychology - 4L

Chair: Nicolas F. Jenkins, Southern Illinois University
Presentations: *Counselors in Training: Introducing the Past, Present, and Future Perspectives of Evidence Based Practice in Psychology*. Abigail R. Gaffey, Southern Illinois University; *Past Perspectives of Evidence Based Practice*

in Psychology. Nicholas F. Jenkins, Southern Illinois University; *Current Perspectives of Evidence Based Practice in Psychology*. Katy O'Regan Rimstad, Southern Illinois University; *Future Perspectives of Evidence Based Practice in Psychology*. Sheetal R. Shah, Southern Illinois University
Discussant: Dr. Kathleen Chwalisz, Southern Illinois University

INT Career Development Research in Hong Kong - PDR 4

Chair: Danny F. Lam, Hong Kong Baptist University, China & S. Alvin Leung, The Chinese University of Hong Kong, China
Presentations: *Relation Between Career Exploration and Career Development Status in the Hong Kong Context: Examining Social Cognitive Career Variables and Beyond*. Raysen Cheung City University of Hong Kong, China; *Career Decision-Making Self-Efficacy and Outcome Expectations of Secondary Students in Hong Kong*. Yat-hung Chui, Hong Kong Polytechnic University, China; *Self-determination in Career Indecision of Hong Kong Students*. Danny F. Lam, Hong Kong Baptist University, China; *Comparing Parental Expectations and Career Decision-Making Difficulties in Three Chinese Regions*. S. Alvin Leung The Chinese University of Hong Kong, China, Zhi-jin Hou Normal University, China, Itamar Gati The Hebrew University of Jerusalem, Israel
Discussant: Ella Po-on Chan, Hong Kong Baptist University, China

SCI Connecting the Science and Practice of Psychology -Williford A

Chair: Linda Forrest, University of Oregon
Presentation: Steven Breckler, Executive Director for Science, American Psychological Association

PRA Counseling Psychologists as State Association Leaders - 4K

Chair: Laura Palmer, Seton Hall

University
Presentations: Armand Cerbone, Howard Brown Health Center, Chicago, IL; Bob McPherson, University of Houston; Michael Duffy, Texas A & M

INT Counseling Psychology in Colombia, Puerto Rico, Ecuador and China - Boulevard C

Chair: S. Alvin Leung, The Chinese University of Hong Kong, China
Presentations: *Colombia Psychology*. Edward A. Delgado-Romero, University of Georgia, Eduardo Delgado-Pollo Universidad Pedagógica Nacional, Colombia, Corey Smetana, Boston; Ruben Ardila, University of Georgia; *The Practice of Psychotherapy in Puerto Rico*. Luis A. Rivas, VA Caribbean Healthcare System, San Juan, Puerto Rico; *Psychology in Ecuador*. Maria Cristina Cruza-Guet, Lehigh University, Arnold R. Spokane, Lehigh University; *The Future of Counseling in China: Indigenization and Internationalization*. S. Alvin Leung, The Chinese University of Hong Kong, China, Zhi-Jin Hou, Beijing Normal University, China and Changming Duan, University of Missouri Kansas City

Experiences With Grief and Loss --

International Ballroom North
Chair: Robyn Howarth, University of Iowa
Presentations: *Adjustment to Parental Death during Childhood*. Robyn Howarth, University of Iowa; *Using Supervision to Prevent Vicarious Trauma in Beginning Counselors*. Katya Lamskova, University of Iowa; *Mourning the Loss of a Loved One is Culturally Defined*. Joleen Schoulte, University of Iowa. Discussant: Melba Vasquez, Anderson House at Heritage Square

How Special is Our Specialty: Comparisons of Counseling and Clinical Psychology Programs - 4B

Chair: Greg J. Neimeyer, University of Florida; *Graduate School Mentoring in Psychology: A Comparison of Students*

in Counseling and Clinical Psychology Programs. Jennifer M. Taylor and Greg J. Neimeyer, University of Florida; *The Internship Match: Comparing Outcomes in Clinical and Counseling Psychology Programs.* Kenneth G. Rice & Greg J. Neimeyer University of Florida and Greg Keilin, University of Texas-Austin; *Perceptions of the Workplace: A Comparison of Faculty in Counseling and Clinical Psychology Academic Training Programs.* Greg J. Neimeyer, University of Florida, Gina Owens University of Tennessee, Bonnie Moradi, University of Florida
Discussant: Rodney K. Goodyear, University of Southern California

International Perspectives on Supervision and Training -- Astoria

Chair: Nicholas Ladany, Lehigh University
Presentations: *Professional Development Needs for Counselors in International Schools.* Arpana G. Inman, Arlette Ngoubene, & Nicholas Ladany, Lehigh University; *Korean Counselors' Experiences in Supervision.* Keeyeon Bang, Korea Digital University; *Cybersupervision and Training: Tools, Ethics, & Future Trends.* Arpana G. Inman & Nicholas Ladany Lehigh University

Meeting the Needs of International Students on College Campuses - 4C

Chair: Tanya I. Razzhavaikina, University of Nebraska - Lincoln
Presentations: *International Students' Adjustment to the United States: Issues and Implications.* Soumya Madabhushi, University of Nebraska - Lincoln; *International Students Expectations of Multicultural Counseling.* Autumn Backhaus, University of Nebraska - Lincoln; *Reaching Out to International Students: Practical Suggestions for Counseling Work.* Tanya I. Razzhavaikina & Oksana Yakushko, University of Nebraska - Lincoln
Discussant: Tanya I. Razzhavaikina, University of Nebraska - Lincoln

STU Next Steps Fair: Counseling Psychology Jobs, Postdoc Positions, and Internships - Waldorf

Chair: Kelly Russo, Fielding Graduate University
Event: Organizations with jobs and post-doctoral positions to fill will have an opportunity to connect one-on-one with interested candidates. Internship sites will be able to promote their programs to prospective applicants in roundtable discussions organized by type of site. This is a free opportunity to promote your organization and meet the next generation of counseling psychologists! It is sponsored by the 2008 ICPC Student Subcommittee. An RSVP from job/post-doctoral/internship sites is requested but not required for participation in this event. Prospective applicants, make sure you take advantage of this opportunity to learn more about possible job, post-doctoral, and internship sites first-hand from their representatives!

Rurality and Diversity: Reciprocal Implications - 4A

Chair: James L. Werth, Jr., Radford University & Tom Mullis, Radford University
Presentations: *Allies and Affective Distress in Rural GLB Adolescents.* Tracy J. Cohn, Radford University; *Valerie S. Leake, Radford University; Rural Women and Mental Health.* Sarah L. Hastings, Radford University; *Rural Community Resilience, Disasters, and Diversity.* Robin S. Cox, University of British Columbia, Canada, Discussant: *How will Rural Counseling Psychologists Address Diversity Issues?* E. Janie Pinterits, University of North Dakota

Teaching Collaboratively About Racism's Local, Global Reality - Boulevard A

Chair: Chalmer E. Thompson, Indiana University-Purdue University Indianapolis
Presentations: *Cultivating Diversity and Equity Discourse among Pre-Service Teachers.* John B. Okech, Kyambogo University, Kampala, Uganda; *Teaching*

Race and Peace to Ugandan University Lecturers. Chalmer E. Thompson, Indiana University-Purdue University Indianapolis; *Urban Youth, Loss, and Violence.* Rev. Mmoja Ajabu, Light of the World Christian Church
Discussant: Dr. Khaula Murtadha, Dean, Indiana University School of Education, Indianapolis Indiana University-Purdue University, Indianapolis

What Can Counseling Psychologists Do in Unjust Worlds? - 4M

Chair: Ma. Teresa Tuason, University of North Florida
Presentations: *What Happens to Us? Families Left Behind by Overseas Workers.* Ma. Teresa Tuason, University of North Florida; *The Postseparation Adjustment of Middle Class Filipino Men: Its Relationship to Separation Status, Sociodemographic and Personality Variables.* Edelvina Sembrano-Relucio, Ateneo de Manila University, Philippines; *Adolescent Boys Referred for Psychotherapy: Examining Emotional Instability in Light of Parental Identification.* Washington C. Garcia, Ateneo de Manila University, Philippines; *Becoming the "addict" of the Family: Family Dynamics and Female-related Issues in the Family of the Filipino Substance-using Female.* Maria Kathleen, Bernadette Nisperos-Puente, Bunker Hill Community College at Massachusetts; *The Streetsmart Streetchild: A Study on the Cognitive Abilities and Worldview of Street Children who were Sexually Abused, Substance Abusing and In Conflict with the Law.* Ma. Louise P. Trivino, In Touch Community Services, Philippines
Discussant: Ma. Teresa Tuason, University of North Florida

Research Paper Presentations

Religious and Indigenous Practices in Counseling - Williford C

Chair: Robbie J. Steward, Michigan State University
Presentations: *Counselors' Use of*

FRIDAY, MARCH 7

Spirituality to Bridge Culture Gaps. Marie Morrison University of British Columbia, Canada; *Attachment Theory and Religiosity in Counseling.* Duane Reinert Conception Seminary College, Carla Edwards Northwest Missouri State University; *Integrating Traditional and Western Psychotherapies in Botswana.* Sophy Moagi-Gulubane University of Botswana, Botswana, Mondy Segopolo University of Botswana, Botswana; *Mindfulness and Indigenous Psychologies in Counseling Training.* John Christopher, Jennifer Chrisman, Penny Dahlen, & Suzanne Christopher Montana State University

6:00 PM - 7:00 PM

All Conference Social Hour - Grand Ballroom

Enjoy time with colleagues and meet new ones. Cash bar provided.

7:00 PM - 8:00 PM

Alumni Receptions

Ball State University - 4A

Indiana State University and IU

Counseling and Psychological Services

(The University Counseling Center) -4B

Indiana University - 4F

University of Akron Collaborative

Program in Counseling Psychology and

Pre-doctoral Psychology Internship - 4K

Ohio State University - 4M

Purdue University - 4H

University of Georgia- 4C

University of Illinois- 4G

University of Iowa - 4E

University of Memphis - 4I

University of Minnesota Counseling

Psychology Program - 4D

Virginia Commonwealth University-4J

7:00 PM - 9:00 PM

STU Student Happy Hour at Kitty O'Sheas (located in the Hilton Chicago)!

Come meet and mingle with counseling psychology students from around the world. This event is organized by the

Student Subcommittee of ICPC and sponsored by APAGS.

9:00 PM - MIDNIGHT - Grand Ballroom

Dance

Funka DJ is the official "spin-off" DJ of renowned award-winning music ensemble Funkadesi, of whom Senator Barack Obama has said: "Funkadesi really knows how to get a crowd going. I can't say enough how energizing this band is. There's a lot of funk in that desi."

Funka DJ spins a mix of transglobal rhythms that span Latin, Caribbean, East Indian, Arabic, and African cultures is infectious and keeps everyone on the dance floor!

PSY.D.

COUNSELING PSYCHOLOGY

The Radford University Psy.D. Program will be enrolling its first cohort of students in Fall 2008.

The Program:

- Is designed for post-Master's students who want to become comprehensive mental health providers
- Uses a Practitioner-Scholar Model
- Focuses on rural mental health with emphases on social justice, diversity, and evidence-based practice in psychology
- Includes three years of post-Master's coursework, extensive practica, a dissertation, and internship
- Will have a student-faculty ratio of less than 2:1 per cohort
- Offers tuition remission and graduate assistantships throughout the on-campus time in the program (pending adequate state funding)
- Is working toward developing an internship consortium that is dedicated to training Radford Psy.D. students

Radford University is a co-educational, comprehensive, state-supported institution, located in scenic southwestern Virginia (50 miles from Roanoke), with an enrollment of approximately 9,200 students.



Core Faculty:

Tracy Cohn
Sarah Hastings
Valerie Leake
Tom Mullis
Ruth Riding-Malon
James L. Werth, Jr. - Program Director

Doctor of Psychology Program:

www.radford.edu/psyd

540.831.5361

RADFORD UNIVERSITY

Saturday, March 8, 2008

7:30 AM - 5:00 PM

Registration - 8th Street South, Lobby Level

8:00 AM - 9:30 AM

SATURDAY KEYNOTE ADDRESS - International Ballroom North



The Resilience and Cultural Strengths of African American Clients and Families in Treatment. **Nancy Boyd-Franklin, Ph.D.**, Author and Professor at Rutgers University in the Graduate School of Applied and Professional Psychology.

Introduced by Marie Miville, Teachers College, Columbia University

Many Faces of Counseling Psychology Awards

Presented by Kristee Haggins, Tri-chair, ICPC Awards and Recognition Committee

9:30 AM - 4:00 PM

Exhibits/Posters - International Ballroom South

Exhibit hall opens! Enjoy exhibits and posters throughout the day.

10:00 AM - 11:50 AM

Working Groups

Pre-registration required.

Please go to Friday, March 7, schedule for working group time and location information.

10:00 AM - NOON

Continuing Education Workshops

Pre-registration required.

AIDS in the World - Williford A

Shoshana D. Kerewsky, Psy.D.

University of Oregon

Bullies, Victims, and Bystanders: Why Would Young People Do Such Things - Williford C

Arthur Horne, Ph.D.

University of Georgia

Credentialing and Licensure for Psychologists: U.S., Canada and International - Astoria

Judy E. Hall, Ph.D.

National Register of Health Service

Providers in Psychology

Eating Disorders NOS: The Nature and Treatment - Waldorf

Lori Tagger, Ph.D., University of

Missouri - St. Louis

Laurie Mintz, Ph.D., University of

Missouri-Columbia

Susan Kashubeck-West, Ph.D.,

University of Missouri - St. Louis

NOON - 12:50 PM

Poster Sessions Track V - Diversity and Multicultural - International Ballroom South

Bisexual Identity, Group Identity, and Well-Being. Erin Armoutliev, University of Akron; James Werth, Jr., Radford University - P1

Sexual Identity Development & Well-being of Chinese Lesbians. Yan Li, Brian Johnson, University of Northern Colorado - P2

Predictors of Alcohol Abuse among Lesbian and Gays. Huan-Hsiang Ueng, Sharon Horne, University of Memphis - P3

Predicting Relationship Satisfaction Among Same-Sex Female Dual Earner Couples. Jodi Boita, Rochester Institute of Technology; Kathleen Bieschke, Pennsylvania State University - P5

Family Environment and Heterosexual Family Membership GLBT-Affirmative Attitudes. Sharon Horne, University of Memphis; Sharon Scales Rostosky, Ellen Riggle, University of Kentucky; Jennifer Arm, Katherine Hiestand, University of Memphis - P6

Heterosexual Voting and Legal Equality for Sexual Minorities. Rebekah White, Oklahoma State University; Teresa Bear, University of Wisconsin; Barbara Carozzi, Oklahoma State University - P7

Switching: The Narratives of Heterosexually Married Gay Men. Pan Chieh-Cheng, Meiho Institute of Technology, Taiwan - P8

The Meaning of Intimacy For Gay Men. David Loran, University of British Columbia, Canada - P9

Career-Related Experiences Of Transgender Individuals. Susan Kay Brauer, University of Nebraska-Lincoln - P10

Counseling Psychology in a Changing World: LGB Individuals' Reactions to the 2006 Marriage-Ban Amendments. F. Nicholas Denton, University of Kentucky, - P11

Trinidad's Corporate Closet: Investigating Gay and Lesbian Identity in the Workplace. Cherisse Gill, Yu-Wei Wang, and Cheryl Nicholas, Southern Illinois University-Carbondale - P12

Living in Puritan America in 2007: The Religious Struggles of GLBT Christians in the US. Sallie Ann Boulos, Texas A & M University - P13

Social Support and Negative Affect Among Parents of LGB People. Jennifer Arm, University of Memphis - P14

Same-Sex Intimate Partner Violence: Intervention and Program Development. Alysondra Duke, University of Nebraska - P15

Sexual Orientation & Gender Identity Differences In Indirect Aggression. Olivia Leeker, Oklahoma State University - P16

Gender Identity Disorder and the DSM: Review of The Current Literature. lore m. dickey, University of North Dakota - P17

Gender Role Implications on Same Sex Intimate Partner Abuse. Carrie Brown, Keisha Love, Kenneth Tyler, Patton Garriott, Clarissa Roan, University of Kentucky; Deneia Thomas, Eastern Kentucky University - P18

Psychological Well-Being, Ethnic Identity, and Sociocultural Adaptation among College-Aged Missionary Kids. Michael Joseph Klemens, Seattle Pacific University - P19

American Indian Women College Students' Perspectives on Work and Family. Jennie Lyn Bingham, Aaron Jackson, Steven Smith, Brigham Young University - P20

The Impact of Teacher-Child Relationship: A Comparison of Latino and Caucasian Students in the U.S. Rhonda Casillas, Arizona State University - P21

Biculturalism among American Indian Graduate Students. Colton Miller, Aaron Jackson, Steven Smith, Jennie Lyn Bingham, Brigham Young University - P22

Ethnic Identity and Self-Beliefs: Are They Related to Persistence Decisions of

Undergraduates? Marybeth Rigali-Oiler, Sharon Robinson Kurpius, Sarah Dixon, Arizona State University - P23

Exploring Social and Academic Barriers with Ethnic Minorities on a Predominantly White Campus. Lawrence Chatters, University of Nebraska-Lincoln - P24

Motivation: Exploring Patterns of Success in African American Students. Taisha Caldwell, Ezemenari Obasi, Southern Illinois University-Carbondale - P25

Invariance of the Structure of Coping for African American and European American Persons with Cancer. Carolyn. Heitzmann, Thomas Merluzzi, University of Notre Dame - P26

African Americans Making Meaning of HIV/AIDS. Heather Walton, Ruth Fassinger, University of Maryland-College Park - P27

Collectivistic Forgiveness. Joshua Hook, Everett Worthington, Jr., Shawn Utsey, Virginia Commonwealth University - P28

Psychometric Properties of the World Assumptions Scale. Matthew Kale, Patricia Frazier, Samantha Anders, University of Minnesota - P29

Well-Being among Latina Adolescents. Lisa Edwards, Rebecca Mayor, Brittany Barber, Marisa Green, Keyona Jarrett, Amy Kowalski, Shirley Newcomb, Marquette University - P30

Attachment, Self-Constraint and Depression Among Latinas/os. Patton Garriott, University of Missouri-Columbia ; Keisha Love, Kenneth Tyler, Carrie Brown, University of Kentucky; Deneia Thomas, Eastern Kentucky University - P31

Attachment, Racism, and Self-Esteem Among Whites. Patton Garriott, University of Missouri-Columbia; Keisha Love, Kenneth Tyler, Carrie Brown,

University of Kentucky; Deneia Thomas, Eastern Kentucky University - P32

Asian Value Gap, Parental Bonding, & Family Conflict. Sin-Wan Bianca Ho, University of Southern Mississippi; Yong Park, University of California-Santa Barbara - P33

Context and Well-Being in Multiracial Individuals: Early Findings. Jennifer Teramoto Pedrotti, California Polytechnic State University; Lisa Edwards, Marquette University - P34

Measurement and Structural Invariance of the Asian American Family Conflict Scale. Matthew Miller, Li-Ling Lin, State University of New York at Albany; Richard Lee, University of Minnesota - Twin Cities - P35

Latinos and Depression: Treatment in a Community Clinic. Gregory Benson, Azara Santiago-Rivera, Jonathan Kanter, William Reyes, Andrew Busch, Laura Covington Rusch, University of Wisconsin-Milwaukee - P36

Acculturation and Perceived Discrimination Among U.S. Hispanics. Sherry Wang, Ana Martinez, Oksana Yakushko, University of Nebraska-Lincoln - P37

Pediatricians' Immigrant Mental Health Referrals: A Chart Review. Casey Tallent, University of Nebraska-Lincoln; Ashlea Franques, Creighton University Medical Center-University of Nebraska Medical Center; Oksana Yakushko, University of Nebraska-Lincoln; Santi Budiasih, Creighton University Medical Center-University of Nebraska Medical Center; Cristina Fernandez, Creighton University Medical Center - P38

Race-Based Discourse among Urban High School Youth. David Blustein, Boston College, Maureen Kenny, Kerri Murphy, Maryam Jernigan, Leyla Gualdron-Murhib, Maria Countinho, Christine Catraio, Margaret Connolly, Faedra Backus, Molly Sullivan, Boston College - P39

Psychological Factors and Nutrition Behaviors among African American Women. Jessica Jones, Carolyn Tucker, University of Florida - P40

Career Counseling Issues for Persons living with HIV/AIDS. David Dahlbeck, Suzanne Lease, University of Memphis - P41

Attachment Theory and Intimate Partner Violence in Latino Population. Franco Dispenza, Douglas Ribeiro, Melinda Paige, Laurel Watson, Nick White, Georgia State University - P42

Race Differences in Perceptions of the Prototypical Racist. Wendy Whitsett, Stacey Williams, Michaela Bucchianeri, Alexandra Corning, University of Notre Dame - P43

An Acculturation Scale for Asian International Students: Development and Validation. Shiou-Feng Gu, Carole Pistole, Purdue University - P44

White Racial Identity: Profiles, Factors, & Psychological Correlates. Kwong-Liem Karl Kwan, Purdue University; Michael Mobley, University of Missouri-Columbia - P45

Challenges and Opportunities of Jamaican International Students. Calvin Isaacs, Claudine Hyatt, Ball State University - P46

An Icelandic Experience of Counseling Psychology. Bjorg Sigridur Hermannsdottir, Gunnar Orn Ingolfsson, Ball State University - P47

Studying Counseling Psychology: A Taiwanese Experience. Yueh Ching Hsu, Ball State University - P48
International Endeavors: Teaching, Therapy, and Scholarship. Lia Softas-Nall, University of Northern Colorado - P49

NOON - 1:00 PM

ECP Early Career Professionals Mentoring Event - 4E, 4F, 4G, 4H
 ECPs will meet, ask questions, and get advice/mentoring from some of our most distinguished counseling psychologists. Pre-registration required.

12:10 PM - 12:50 PM

Organizational Meeting to Strengthen International Counseling Connections - Williford C
 All international participants are invited to attend.

1:00 PM - 1:50 PM

Poster Sessions Track VI - Diversity and Multicultural - International Ballroom South

Possibilities for Peace: Enhancing Cross Cultural Transformative Mediation. Natasha Ali, Michael Waldo, New Mexico State University - P1

Ethnic and Racial Identity Development among Mainland Chinese Populations in the US: An Oral Narrative Approach. Thomandra Sam, Linxiang Zhu, Auburn University - P2

Internalized Racial Oppression as a Predictor of Psychological Distress, Self-Esteem, and Life Satisfaction. Tamba-Kuii Masai Bailey, Y. Barry Chung, Georgia State University - P3

Self Medication among Hispanic Outpatient Substance Abusing Adolescents with PTSD. Laura Elizabeth Chapman, Deborah Wiese, Whitman

College; Nancy Wu, UCLA Semel Institute Center for Community Health - P4

Effect of Similarity Manipulation on Latino Attitudes Towards Prison Reform. Yessenia Manzo, Deborah Wiese, Whitman College - P5

Parental Attachment, Family Communalism, Racial Identity, and Self-Esteem Among Black College Students. Carrie Brown, Keisha Love, Kenneth Tyler, Patton Garriott, Clarissa Roan, University of Kentucky; Deneia Thomas, Eastern Kentucky University - P6

Understanding Acculturation: Experiences of Male Arab Muslim Immigrants Living in the United States of America. Nancy Hammoudah, Western Michigan University - P7

High-Risk African American Adolescents: A Review of Current Issues and Treatments. Heather Wood, Ball State University - P8

African American Women's Feelings of Exclusion in a Predominantly White Feminist Classroom. Kathryn Swope, Karyn Boatwright, Kalamazoo College - P9

Help-Seeking of Asian-American Students. Nicole Ruzek, Dao Nguyen, David Herzog, Craig Muir, Genevieve Crean, California State Polytechnic University-Pomona - P10

Keeping it Black and White. Kristin Gillen, Kenlana Burton, Victoria Cane, Bianca Fetherson, Jody Tomko, Western Michigan University - P11

Development of the Distance from Privilege Measure. Barbara Kerr, Karen Multon, Maggie Syme, Nancy Fry, University of Kansas; Marie Hammond, Tennessee State University - P12

Religious Perspectives on the Mental Health and Well Being of Latino Immigrants. Jeffrey Reznicek, Oksana Yakushko, University of Nebraska-Lincoln - P13

Cultural Conceptualization: Challenges in Counseling Sexual Abuse Survivors. Pei-Yi Lin, University of Kentucky; Nien-Hwa Lai, National Taipei University of Education, Taiwan; Rory Remer, University of Kentucky - P14

Model of Socio-Emotional Needs of Latino Immigrant Adolescents. Christiane Blanco-Oilar, University of Oregon - P15

Cultural Sensitivity in Healthcare: Implications for Counseling Psychology. Katherine Daly, Carolyn Tucker, Jessica Jones, University of Florida - P16

Ten Years of Latina/o Research: A Content Analysis of the Hispanic Journal of Behavioral Sciences (1996-2006). Alejandro Morales, University of Nebraska-Lincoln; Lizette Ojeda, University of Missouri-Columbia - P17

Aftermath of September 11: A Muslim Woman's Perspective. Jaleel Abdul Adeel, Ummul Baneen Kazmi, University of Illinois - P18

Holocaust Survivors: A Study in Resilience and Recovery. Christine Benitez Cardenas, Elizabeth Schall, Todd Savage, Eve Adams, New Mexico State University - P19

Cultural Identity and Academic Achievement among Native American College Students. Aaron Jackson, Steven Smith, Brigham Young University; Brian Perry, San Juan College; Caleb Bush, University of New Mexico-Gallup; Jeffrey Elder, Brigham Young University - P20

Latina/o College Student Resilience. Veronica Orozco, University of Michigan - P21

Factor Structure and Validity Evidence of the MCSE-RD. Hung-Bin Sheu, Arizona State University; Robert Lent, University of Maryland; Marybeth Rigali-Oiler, Dana Weber, Arizona State University - P22

Using Flexible Treatment Manuals for Culturally Relevant Intervention. Katherine Chwalisz, Stephanie Clancy Dollinger, Kayla Hand, Erin Zerth, Chuck Hees, Southern Illinois University Carbondale - P23

Convergence between Scores on the Index of Race-Related Stress. Nicole Fischer, Benita Belvet, Joshua Hook, Shawn Utsey, Virginia Commonwealth University - P24

Heart Rate Variability, Trauma Symptom Expression, and Psychological Distress in African Americans. Benita Belvet, Nicole Fischer, Pia Stanard, Joshua Hook, Shawn Utsey, Virginia Commonwealth University - P25

Maternal Lifetime Substance Abuse Disorder and Childhood Outcomes in American Indians. Anitra Mallory, University of Nebraska-Lincoln - P26

Acculturative Stress, Racism-Related Stress, and Ethnic Identity. Matthew Miller, Jung Eun Kim, Minsun Lee, Ji Eun Lee, Jerome Farrell, State University of New York-Albany - P27

Latino Immigrant Family Men Adjustment to the U.S. Emmanuel Mercedes, Pamela Foley, Seton Hall University - P28

African Centered Worldview as a Predictor of High Self Esteem. Bedford Frank Palmer II, Southern Illinois University Carbondale - P29

Culture and Help-Seeking. Hsin-Ya Liao, Yung-Jui Yang, University of Illinois Urbana-Champaign; Kwan-Kuo Hwang, National Taiwan University; James Rounds, University of Illinois Urbana-Champaign - P30

Tribal Attachment Among American Indian People. Carrie Winterowd, Diane Montgomery, Glenna Stumblingbear, Desi Harless, Kaycie Hicks, Krysta Webster, Oklahoma State University - P31

But we never beat them: This Wouldn't Happen in our Country. Gella Richards, London Metropolitan University, Great Britain - P32

Early Learning Differences in the Context of Language Background. Esther Care, Amanda Thomas, Masa Pavlovic, University of Melbourne, Australia - P33

The Black Community Defined. Nyasha Grayman, University of Delaware - P34

Features of Anxiety, Depression in Older Latinos. Daniel Singley, Julie Wetherell, University of California-San Diego - P35

Influence of Prejudice on Interpersonal Evaluations. Michael Dudley, Southern Illinois University-Edwardsville - P36

Development & Occupational Attainment among Poor Youth of Color. Matthew Diemer, Michigan State University - P37

Gullah Tales: Cultural Identity and Narrative Analysis. Fayth Parks, Georgia Southern University - P38

Cultural Validity of the CSRLI with Asian Americans. Jayoung Choi, Middle Tennessee State University; James Rogers, University of Akron - P39

Enhancing Self-Disclosure among Asian Americans in Group and Individual Therapy. Young Hoang, Ivory Toldson, Howard University - P40

Perceptions of Counselor Characteristics: Ethnicity, Acculturation and Gender. Huan-Chung Scott Liu, University of Iowa; Lawrence Schneider, University of North Texas - P41

Predictors of Asian American College Students' Suicide Ideation. Y. Joel Wong, Alison Schwing, Indiana University; Chris Brownson, University of Texas-Austin - P42

Great Commonwealth: Counseling psychology in Taiwan and US. Hung Chiao, University of Missouri-Columbia - P43

Ethnicity, Coping and Help-Seeking. Sadamura Nana, Monsour Counseling & Psychological Services, Claremont University Consortium; Christina Sun, University of Massachusetts - P44

"Only Allah Can Heal": A Cultural Formulation of the Psychological, Religious, and Cultural Experiences of a Somali Male. Michael Starkey, Hyun-Kyung Lee, Chia-Chen Tu, Jason Netland, Michael Goh, University of Minnesota, Twin Cities; David McGraw, Schuchman, Ahmed Yousef, Schuchman Community-University Health Care Center, Minneapolis - P46

Parenting in Filipino Transnational Families. Amethyst Reyes Taylor; Ma. Teresa Tuason, University of North Florida - P47

1:00 PM - 1:50 PM

Professional and Practice Issues

Roundtables - Waldorf

Roundtable One

International Counseling Journals: Publication Practices and Opportunities.

Lawrence H. Gerstein (Chair), Ball State University; Stefania Atgisdattir, Ball State University; Walter Lonner, Western Washington University; Paul Wilkins, Manchester Metropolitan University, United Kingdom; Arthur Horne, The University of Georgia; Kwong-Liem Kwan, University of Missouri

Roundtable Two

Cyberbullying: The Changing Face of Aggression in Schools. Danielle M. Law, The University of British Columbia, Canada; Jose F. Domene, Trinity Western University, Canada

Roundtable Three

Vocational Psychologists Responding to a Changing World
Chairs: Briana K Keller, University of Washington; Paul A Gore, University of Utah

Roundtable 3A: Enhancing Graduate Training in Vocational Psychology. Karen O'Brien, University of Maryland; Patrick Rottinghaus, Southern Illinois University

Roundtable 3B: International Developments in Vocational Psychology. Itamar Gati, Hebrew University, Jerusalem; Laura Nota, University of Padova, Italy

Roundtable 3C: Celebrating 100 Years of Applying Vocational Psychology in Communities. Ellen McWhirter, University of Oregon; Cindy Juntunen, University of North Dakota

Roundtable 3D: Evidence-Based Vocational Psychology Interventions. Susan C Whiston, Indiana University; Steven D Brown, Loyola University Chicago

Roundtable 3E: Changing National Policy on Vocational Psychology Issues. Ruth E Fassinger, University of Maryland; Daryl Luzzo, Strategic Partnerships LLC

Roundtable 3F: Securing Grant Funding for Vocational Psychology Research. Nadya Fouad, University of Wisconsin - Milwaukee; Angela Byars-Winston, Center on Education & Work

Roundtable 3G: Diverse Career Paths for Vocational Psychologists. Briana K Keller, University of Washington; V Scott Solberg; Center on Education & Work

Roundtable 3H: Integrating Career Advising with Related Services. Paul A Gore, University of Utah; Saba Rasheed Ali, University of Iowa

Roundtable Four

Promoting Psychology in Africa: Lessons from the Field. Rex Stockton, Indiana University; Amy Nitza, Indiana University Purdue University Fort Wayne; Keith Morran, Indiana University Purdue University Indianapolis

Roundtable Five

Using Help-Seeking Research to Inform Counseling Practices. Timothy E. Rogers, The University of Akron; Anthony Isacco, Loyola University of Chicago

Roundtable Six

Animal/Human Interaction: Contemporary Issues in Practice. Camille DeBell, Oklahoma State University; Aubrey H. Fine, Cal Poly University; Karen D. Shaefer, New Mexico State University; Kimberly A. Hays, Illinois State University; Melissa E. Trevathan, University of Houston

Roundtable Seven

Find Out More About SCP Special Interest Groups. Stephen W. Cook, Texas Tech University; Anne R. Farrar-Anton, Hackensack University Medical Center; Deborah L. Wiese, Whitman College; Tammi Vacha-Haase, Colorado State University; Sally M. Hage, University at Albany, SUNY; Paul E.

Priester, Cardinal Stritch University;
Lewis Z. Schlosser, Seton Hall
University

Roundtable Eight

International Counseling Psychology Faculty in the United States. Georgios K. Lampropoulos, Florida State University; Ayse Ciftci, Purdue University; Oksana Yakushko, University of Nebraska; Yu-Wei Wang, Southern Illinois University; Meifen Wei, Iowa State University; Kwong-Liem Karl Kwan, University of Missouri-Columbia

Roundtable Nine

Qualitative Researchers as Scientists-Practitioners and Social Change Agents. Yu-Wei Wang, Southern Illinois University at Carbondale; Susan L. Morrow, University of Utah

Roundtable Ten

Counseling African American Women from a Multicultural-Feminist Perspective. Telsie A. Davis, Georgia State University; Lydia Canty, Georgia State University; Natasha Garderner, Georgia State University

1:00 PM - 1:50 PM

Symposia

EDU Defining and Measuring Competence: An Update on the Competency Benchmarks Document and its Relevance for Counseling Psychology - Boulevard C

Chair: Catherine Grus, Associate Executive Director for Professional Education and Training, American Psychological Association
Presentations: Nadya A. Fouad, University of Wisconsin; Linda Campbell, University of Georgia; Ralph Ted Packard, University of Utah

Global Aging: Counseling Psychology's Unique Ability to Contribute - 4C

Chair: Tammi Vacha-Haase, Colorado State University

Presentations: *Older Adults in Counseling: The Role of Positive Psychology.* Mary Miller Lewis, Senior Life Consultants; *Long-Term Care in the Changing World: A Systemic Perspective.* Michiko Iwasaki, University of Washington School of Medicine; *Opportunities and Challenges in Mental Health and Aging Policy.* Diane L. Elmore, APA Public Interest Directorate

Going Global: Counseling Psychologists' Response to People of African Descent from the Gulf Coast and Beyond - 4D

Chair: M. Nicole Coleman, University of Houston

Presentations: *Black Counseling Psychologists and International Social Justice.* M. Nicole Coleman, University of Houston; Adanna J. Johnson, University of Houston; *Social Justice, Black Power and the Global African Community: The Revolution Will be Internationalized by Authentic Strugglers.* Mark A. Bolden, Howard University

Integrating Trauma Counselling in a Global Context - CANCELED

Chair: Marvin Westwood, University of British Columbia, Canada
Presentations: *An Examination of Two International Crisis Response Events: Working with the Children of the Disappeared in Chile and Trauma Among CHF Workers in Guyana.* Marvin Westwood, University of British Columbia, Canada and Marla Buchanan, University of British Columbia, Canada; *The Experience of Columbian Child Soldiers From a Resilience Perspective.* Liliana Cortez, University of British Columbia, Canada; *The Psychological Impact of Operation Iraqi Freedom on Children in Iraq.* Kasim Al-Mashat, University of British Columbia, Canada

Internalized Heterosexism: Current Knowledge and Future Directions - 4A

Chair: Dawn M. Szymanski, University of Tennessee
Presentations: *Internalized*

Heterosexism: A Historical and Theoretical Overview. Dawn M. Szymanski, University of Tennessee; *Internalized Heterosexism: Psychosocial Correlates and Research Directions.* Dawn M. Szymanski, University of Tennessee; Susan Kashubeck-West, University of Missouri; Jill Meyer, University of Missouri; *Internalized Heterosexism: Clinical Implications and Training Considerations.* Susan Kashubeck-West, University of Missouri
Discussant: Kathleen J. Bieschke, Pennsylvania State University

DIV Racial Microaggressions in Everyday Life: Psychological and Social Costs - Boulevard A

Chair: Suzette Speight, Loyola University Chicago
Presentations: Madonna Constantine, Teachers College, Columbia University; Derald Wing Sue, Teachers College, Columbia University

ECPS Self-Care for Graduate Students and Early Career Psychologists - Williford C

Chairs: Oksana Yakushko, University of Nebraska-Lincoln; Jacquelyn Smith, Marquette University
Presentations: *Incorporating Mindfulness and Meditation in Personal and Professional Life.* Kathryn Northworthy, Rollins College; *Spirituality as Self-care for Counseling Psychologists.* Mary Fukuyama, University of Florida; *How a Counseling Psychologist Became a Potter: Self-care Through Creativity.* Puncky Paul Heppner, University of Missouri-Columbia

Strategies for Effective Ethics Education in Counseling Psychology - 4L

Chair: Elizabeth Reynolds Welfel, Cleveland State University
Presentations: *Enhancing Ethical Practice Through Action.* Beth E. Haverkamp, University of British Columbia, Canada; *Effective Ethics Education: Beyond Exhortations to Do Good.* Elizabeth Reynolds Welfel,

Cleveland State University; *Teaching Ethics: Intensive Reading, Writing, and Experiential Activities*. James L. Werth, Jr., Radford University

PRA **Stress Disorders and Readjustment Problems Among Veterans Returning from Iraq/Afghanistan** - 4K

Chair: Sharon Wills, Texas A & M University

STU **The Inside Scoop: Hear About the Internship Process Straight from Recent Interns** - International Ballroom North

Chair: Julie Koch, University of Minnesota

Presentations: Chris Bader, University of North Texas; Seong-In Choi, Ball State University; Yan Li, University of North Colorado; Amina Mahmood, University of Iowa; Charlotte McCloskey, University of Missouri-Columbia; Anissa Moody, Tennessee State University

Training Experiences of Ethnic Minority and International Students - 4B

Chair: Nadia T. Hasan, The University of Akron and Louise A. Douce, The Ohio State University

Presentations: *Difficult Dialogues Between Ethnic Minority Students and Trainers: The Rhode to Recovery*. Nadia T. Hasan, The University of Akron; *Training Issues from the Trainer's Perspective*. Louise A. Douce, Ohio State University; *Training Issues from an International Counseling Student's Perspective*. Yuhong He, University of Missouri-Columbia
Discussant: Edward A. Delgado-Romero, University of Georgia

1:00 PM - 2:50 PM

INT **Globalization and Indigenization of Counseling Psychology Around the World** - Boulevard B

Chairs: Changming Duan, University of Missouri-Kansas City; Ping-Hwa Chen, National Taiwan Normal University, Taiwan; Arlette Joëlle Ngoubene Atioky, Lehigh University

Presentations: *Asia/Asia American*, Sharon Robinson Kurpius, Arizona State University; Deborah A. Gerrity, American University of Antigua, West Indies; Kwong-Liem Karl Kwan, University of Missouri; *Asia*, Ella Chan, Hong Kong Baptist University, China, Yu-Wei Wang, Southern Illinois University; Hongying Chen, Ball State University; Canada, Lynn Miller, The University of British Columbia, Canada; *Europe*, Stef Ægisdóttir, Ball State University; Maria Malikioti-Loizos, University of Athens, Greece; Middle East, Deniz Canel Cinarbas, University of Alberta, Canada; Danah Barazanji, University of Missouri-Kansas City; *Africa/South Africa*, Fiona Vajk, The Claremont Colleges; Arlette Joëlle Ngoubene Atioky, Lehigh University; South America, Susana Verdine, Argentina; *North American*, David Shen Miller, University of Oregon; Heather Wood, Ball State University

Promoting Multicultural Competence across Professional Contexts - 4M

Chair: Kevin T. Henze and Edith N. Rogers VAMC, and Yuki Okubo, University of Wisconsin-Madison

Presentations: *Incorporating Multicultural Counseling Competencies into the Early Phase of Counselor Training*. Yuki Okubo, University of Wisconsin-Madison; *Training Young Investors in Multicultural Research*. Carmen R. Valdez, University of Wisconsin-Madison; *Diversity Dialogues: Alternative Approach to Multicultural Training*. Stephen M. Quintana, University of Wisconsin-Madison; *Serving All Who Serve: How Counseling Psychologists in Multi-disciplinary Collaboration can Promote Culturally Equitable and Sensitive Services Promotion (CESSP) in the Veterans Health Administration (VHA)*. Kevin T. Henze, Edith N. Rogers, VAMC

Successful Strategies for Specialized International Student Groups - PDR 4

Chair: Chun-Chung Choi, University of Florida

Presentations: *Beyond Language? Asian International Student Support Groups*. Chun-Chung Choi and Yu-Ping Huang, University of Florida; *Exercising Different Roles of Being a Facilitator for International Students Groups*. Shu-Ping Lin, Gouverneur Hospital, New York City Health and Hospital Corporation; Chanda C. Corbett, Loyola College in Maryland; *Creative Ways for Facilitating International Students' Support Groups*. Pius Nyutu, University of Texas at Austin; Yi-Jiun Lin, University of Missouri-Columbia; *Establishing International Student Support Groups on University Campuses*. Lisa Ferdinand, University of Florida

Discussant: Paul B Pedersen, Syracuse University and University of Hawaii

1:00 PM - 3:00 PM

Continuing Education Workshops

Pre-registration required.

The Impact of Working on Psychological Health - McCormick Boardroom

David Blustein, Ph.D., Boston College

Training Counseling Psychologists to Work in Medical Settings - Astoria

Mary Jo Loughran, Ph.D., Chatham University
Robert Mayfield, Ph.D., Southern New Mexico Family Medicine Center
Elaine LeVine, Ph.D., Southwestern Institute for the Advancement of Psychotherapy
Eve M. Adams, Ph.D., New Mexico State University
Len T. Sperry, Ph.D., Florida Atlantic University

1:00 PM - 4:00 PM

Continuing Education Workshop

Pre-registration required.

Working with African-American Clients and Families - Williford B

Nancy Boyd Franklin, Ph.D., Rutgers University

1:00 PM - 5:00 PM

Continuing Education Workshop

Pre-registration required.

Ethical Challenges for Counseling**Psychologists** - Williford A

Steven Behnke, American Psychological Association Ethics Office

2:00 PM - 2:50 PM

Poster Sessions Track VII - Personality

and Mental Health - International Ballroom South

Attachment in Long Distance Romantic Relationships: A Qualitative Study of Security, Intimacy, and Jealousy. Brian Wassil, University of North Florida, Ma. Teresa Tuason, University of North Florida - P1

Students' Sadness Regulation Modes, Parents' Reactions, and Students' Interpersonal Capacity for Intimacy. Sili Zhou, Beijing Normal University, China - P2

College Students' Marital Attitudes and Readiness: Attachment and Religiousness. Jonathan Mosko, Purdue University - P3

College Students' Relationship Language: Meanings of Closeness and Attachment. Noelle Therese Dilly, Purdue University - P4

Reporting of Traumatic Experiences Among College Students. Abby Myers, Georgia State University - P5

Buffering the Effects of Stress on Subjective Well-being in Urban Adolescents: Humor and Venting as

Coping Mechanisms. Kimberly Bena, Elizabeth Vera, Laura Dick, Lydia Wiede, Christopher Merle, Rebecca Corona, Selena Tramayne, Sha'kema Blackmon, Kristen Lamp, John Steele, Ashley Mitchell, Katie Jorgenson, Kenia Gomez, B. Isabel Moallem, Paula Luginbuhl, Ryan Williams, Loyola University Chicago - P6

Effect of Stress on Emotions and Craving in Addicted Homeless Men: A Pilot Study. Marc A. Silva, Walter M. Drymalski, John R. Mantsch, Todd C. Campbell, Dana N. Mair, and Julie K. Janecek, Marquette University - P7

Spirituality as a Predictor of Quality of Life in Individuals with Parkinson's Disease. David Colarossi, Cyndy McRae, University of Denver - P8

Psychological Variables and Chronic Pain among Outpatient Assessment Clients. Shelda Iverson-Borders, Stephen Cook, Texas Tech University; Patrick Randolph, Private Practice, Lubbock, TX - P9

Perceived Emotional Intelligence and Health. Kyle Page, Sue Jacobs, Claudia Porras, Michele Pettit, Oklahoma State University - P10

Further Validation of a New Measure of Perceived Control Over Stressful Events. Nora Keenan, Patricia Frazier, Sulani Perera, Samantha Anders, Sandra Shallcross, Mary Krogmann, University of Minnesota - P11

Understanding Healthy Adoptive Family Functioning: Adoption Disclosure. Maria Wydra, University of Maryland-College Park; Jonathan Mattanah, Towson University; Karen O'Brien, University of Maryland-College Park - P12

Personality Predictors of Psychological Virtues. Christopher Modica, Ball State University - P13

Correlates of Perceived Responses to Capitalization Attempts. Sandra Shallcross, Jenna Bemis, Patricia Frazier, Jeffry Simpson, University of Minnesota - P14

Undergraduate Stress and Reasons for Living: An Exploratory Study. David Ayodele Alabi, Jessica Roberts, Rheeda Walker, Southern Illinois University - P15

The Impact of Attachment on Career: A Proposed Theoretical Framework to Guide Future Research. Stephen Wright, Kristin Perrone, Ball State University - P16

Perceived and Actual Levels of Rape Myth Acceptance. Caroline Johanson, Texas Woman's University - P17

Self-Serving Bias in Cheating. Ashley Heintzelman, Nancy Murdock, University of Missouri-Kansas City - P18

Ability Self-Estimates and Self-Efficacy. Shawn Bubany, Jo-Ida Hansen, University of Minnesota - P19

Gossip and Place Attachment among International Student Community. Jiyeon Lee, M. Carole Pistole, Purdue University - P20

Influence of Abused Experience on Marital Satisfaction. Kevin Deokil Kim, Yon Sei University, South Korea - P21

Conflict Management Style Inventory. Patrick Triggiano, Mary Lee Nelson, University of Wisconsin-Madison - P22

Emotion Expression Tendencies. Leah Barr, Peoria, IL; Jeffrey Kahn, W. Joel Schneider, Illinois State University - P23

Attachment and Career Indecision. Haley Downing, University of Akron; Margaret Nauta, Illinois State University - P24

Protective Behaviors, Depression, and Alcohol-Related Problems. Matthew Martens, Suzanne Hatchett, Mike Karakashian, Kristie Fleming, Roneferiti Flower, University of Memphis - P25

Mechanisms of Mindfulness. Laura Sherr, Patricia Frazier, Cynthia Gross, Mary Jo Kreitzer, University of Minnesota - P26

Who are the Cyberbullies and Cybervictims? Nancy Cunningham, Nancy DeLaney, University of Louisville; Thomas Robbins, Archdiocese of Louisville - P27

Implicit Cognitions Associated with Alcohol and Violent Behaviors. Ezemenari Obasi, Jennifer Mrnak, Christian Bryant, Valerie Henderson, Krystelle Jean-Michel, Southern Illinois University - P28

Adult Attachment & Romantic Relationship Quality. Jessica Lambert, Myrna Friedlander, State University of New York-Albany - P29

Risk and Protective Factors Influencing Trends in Cohabitation. Teri Madura, Susan Troutner, Amanda Smith, Jesse Owen, Gannon University - P30

Subjective Well-being in Urban Adolescents: Interpersonal, Individual, Community Influences. Melissa Morgan, University of California-Santa Barbara; Elizabeth Vera, Loyola University Chicago; Charu Thakral, University of Illinois-Chicago; Rufus Gonzales, DePaul University - P31

Predictors of Life Satisfaction in Urban Youth. Charu Thakral, University of Illinois-Chicago; Elizabeth Vera, Loyola University Chicago; Sam Catanzaro,

Illinois State University; Steve Miller, California State University-Fullerton; Melissa Morgan, University of California-Santa Barbara - P32

Parenting Style and Adolescent Delinquency. Quinn Werner, University of New Orleans - P33

Attachment, Dependency, Self-Criticism, and Depression. Amy Cantazaro, Meifen Wei, Iowa State University - P34

A Measurement of Adolescent Belongingness. Christopher Slaten, Ricardo Thomas, Thomas Baskin, University of Wisconsin-Milwaukee - P35

Depression and Help-seeking Behavior of Rural Farm Women. Sue Jacobs, Oklahoma State University; Wanda McSparron, Concordia College; Merly Paul, Krysta Lynette Webster, Oklahoma State University - P36

The Mediating Effects of Stigma, Self-concealment, Self-disclosure, and Help-seeking Behaviors. Sung-Kyung Yoo, Ewha Woman's University, Korea, Claremont McKenna College; Jee-Young Yoon, Ewha Woman's University, Korea - P37

The Study of Social Anxiety and Attachment Styles. Aynur Eren Gumus, Melisa Sumer, Maltepe University, Turkey - P38

The Relationship of Parental Support, Discipline and Family Activities to Behaviors of Sixth Grade Children. Hye Jeong Cho, Chongshin University, Korea - P39

Adjustment of People with Acquired Disability. Evelyn Andolo, Joytown Special School, Kenya - P40

Measurement of Decisional and Emotional Forgiveness. Joshua Hook,

Everett Worthington, Jr., Shawn Utsey, Virginia Commonwealth University - P41

Do Emotional Processing and Expression Benefit our Health? Kuo-Yi Chung, Arizona State University - P42

Meaning-making Coping and Inflammatory Bowel Disease. Erica Adams, Michael Steger, University of Louisville - P43

Attachment & PTSD: A Connection for Juvenile Offenders? Heather Dukes, Erin Schwartz, Georgia Calhoun, Brian Glaser, University of Georgia - P44

Perfectionism and Personality Styles. Jennifer Stuart, Kenneth Rice, University of Florida - P45

Research on Parents' Impact on College Drinking Behaviors. Debra Ainbinder, Robert Riedel, Danielle Bissett, Jessica Bendjebbar, Natalie Quesada, Lynn University - P46

Changes in Self-Esteem after Early Entrance to College. Samuel Shepard, Alissa Doobay, Jan Warren, Megan Foley Nicpon, University of Iowa - P47

Epistemology as a Predictor of Psychotherapists' Self-Care and Coping. Brittany Brucato, Greg Neimeyer, University of Florida - P48

2:00 PM - 2:50 PM

Symposia

SCIAAdvances in the Study of Prevention: What We Have Learned, What We Still Need to Learn - Boulevard C Chair: Arthur (Andy) Horne, University of Georgia Presentations: *What We Know and Need to Know in Prevention: Stimulating a Discussion.* Robert Conyne, University of Cincinnati; *Going for the Goals: Developing Programs for*

Adolescents. Steven Danish, Virginia Commonwealth University; *Prevention in Schools*. Dorothy Espelage, University of Illinois; *Connecting Families and Schools for Better Prevention in non-U.S. National Contexts*. Benedict McWhirter, University of Oregon

DIVA Theoretical Model of Stress and Coping Among Immigrants and Refugees - 4K

Chair: Arpana Inman, Lehigh University
Presentations: Arpana Inman, Lehigh University; Oksana Yakushko, University of Nebraska, Lincoln

EDU Best Practices in Communication between Academic and Internship Training Directors Regarding Students' Progress and Performance - 4A

Chairs: Sherry Benton, University of Florida; Carrie Winterowd, Oklahoma State University
Presentations: John Westefeld, University of Iowa; James Campbell, Indiana State University; Kathlyn Dailey, Texas State University; Stacey Pearson, University of Michigan; Carrie Winterowd, Oklahoma State University

INT Different Faces of Counseling Psychology across Four Countries - Williford C

Chair: Puncky Paul Heppner, University of Missouri-Columbia
Presentations: *Counseling Psychology in Korea: Status and Future Directions*. Changdai Kim, Seoul National University, Korea; Dong Min Kim, Chung-Ang University, Korea; Young Seok Seo, Chung-Ang University, Seoul, Korea; Kay Hyun Kim, Seoul National University, Korea; *Status of Counseling in Kyrgyzstan*. Sharon Horne, University of Memphis; Elena Sergeevna Molchanova, American University of Central Asia, Kyrgyzstan; *An Overview of Counseling in France*. Valerie Cohen-Scali Conservatoire National des Arts et Metiers, France,

Jean Guichard Conservatoire National des Arts et Metiers, France; *Career Counseling in Italy*. Salvatore Soresi University of Padova, Italy, Laura Nota University of Padova, Italy

PRADiversifying the Practice of Counseling Psychologists: Entrepreneurial and Creative Responses to National Practice Trends - 4D
Chair: Bob McPherson, University of Houston

ECP, STU How to Publish from Start to Finish - International Ballroom North
Chairs: Nadia T. Hasan, The University of Akron; Guler Boyraz, University of Memphis; Chris Robitschek, Texas Tech University
Presentations: Nadya A. Fouad, University of Wisconsin-Milwaukee; Brent Mallinckrodt, University of Tennessee; David S. Shen Miller, University of Oregon; Bonnie Moradi, University of Florida

International Perspectives in Counseling Psychology: Turkey, Pakistan, and U.A.E. - 4L

Chair: Kathryn L. Norsworthy, Rollins College, Florida, USA
Presentations: *Counseling in Turkey*. Deniz Canel Cinarbas, University of Alberta-Edmonton; Canada; Ayse Ciftci, Purdue University, Indiana; Fidan Korkut Owen, Hacettepe University, Turkey; *Counseling in Pakistan*. Kausar Suhail, GC University, Pakistan; M. Asir Ajmal, GC University, Pakistan; *Counseling in the United Arab Emirates*. Mohammed A. Sayed, UBD-Institute of Medicine, Kansas, USA; Fatima Al-Darmaki, United Arab Emirates University, U.A.E

Keeping up with a Changing World: Applying Technology to Counseling - Waldorf

Chair: Kimberly Jorgensen, University of North Dakota
Presentations: *Ethical Implications of E-Therapy*. Elizabeth Welfel, Cleveland

State University; *Rural Telehealth*. Kathleen Chwalisz, Southern Illinois University-Carbondale; *Counseling Couples and Families Online*. Holly Gage, Cleveland State University; *Telephone-based Interventions and Online Methods*. D. Jason Stalides, Southern Illinois University-Carbondale

Research Paper Presentations

Multicultural Training - 4C
Chair: Helen Neville, University of Illinois
Presentations: *Multicultural Counseling Competencies: Views from Those Who Do*. Nancy Arthur, University of Calgary, Canada; *Multicultural Training in Clinical and Counseling Programs*. Adam Kepka Southern Illinois University; *Sensitivity-Training and Korean Trainees Locus of Evaluation*. Dong Su Yoo, Korean Business Consulting & Group Counseling Certification Program, Seoul, South Korea; Young Soon, Kim, Chung-nam Youth Counseling Center, Cheon-An City, South Korea; Dong-gwi Lee, Yonsei University, Seoul, South Korea; Steven C-H Yoo, Samsung Leadership Development Center, South Korea; *Addressing Spiritual and Religious Diversity in Multicultural Training*. Crook Lyon Brigham Young University, Kari A. O'Grady Brigham Young University, Timothy B. Smith Brigham Young University, Dallas R. Jensen Brigham Young University, Thomas Golightly Texas Tech University

Prevention and Interventions - PDR 1

Chair: Stewart Cooper, Valparaiso University
Presentations: *Hmong Youth Delinquency and Counseling/Prevention Implications*. Ju-Ping Huang, University of Minnesota; Blong Xiong, University of Minnesota; *REBT Counseling Influence on Stress of Indian Adolescents*. KJ Varghese, Christ College, India; *Linking Research to*

Counseling Interventions with Homeless People. S. Nogueira, University of Coimbra, Portugal, Joaquim Ferreira University of Coimbra, Portugal; *Effects of ERP for Obsessions Treatment.* Siamak Khodarahimi, Islamic Azad University, Iran

2:00 PM - 3:50 PM

Symposia

Cultural Competence in Asian

Immigrant Research and Practice - 4B

Chair: Yuki Okubo, University of Wisconsin Madison; Pei-Wen Winnie Ma, William Paterson University
Presentations: *Conducting Research with Japanese in the United States: Constructing a Malleable Identity as a Researcher.* Yuki Okubo, University of Wisconsin Madison; *Culturally Competent Psychological Intervention with Japanese Children.* Masako Mori, Japan Education Center, Japanese Educational Institute of New York; *Conducting Linguistically and Culturally Appropriate Career Intervention with Urban Asian Youths.* Munyi Shea, Teachers College, Columbia University; *Needs of Chinese Adult Immigrants in Counseling.* Lillian Chiang, University of Southern California, Pei-Wen Winnie Ma, William Paterson University

2:00 PM - 4:00 PM

Continuing Education Workshop

Pre-registration required.

When Religious Freedom Intersects with Social Justice Advocacy - Boulevard A

Kathleen R. Boggs, Ph.D., University of Missouri - Columbia
Roger L. Worthington, Ph.D., University of Missouri - Columbia
Taleb Khairallah, University of Missouri - Columbia
Julie Wagner, University of Missouri - Columbia

3:00 PM - 3:50 PM

Poster Sessions Track VIII - Prevention and Intervention - International

Ballroom South

Towards Reducing Criminal Behavior: Using the MOTSR to Evaluate the Dynamic Nature of Criminal Thinking. Jon Mandracchia, Marshall Bewley, Danielle Murray, Robert Dean Morgan, Texas Tech University - P1

Pre and Post Trauma Risk and Protective Factors for Posttraumatic Stress Symptoms: A Prospective Investigation. Margaret Gavian, Patricia Frazier, University of Minnesota; The Prospective Trauma Study Team - P2

After-School is Prevention: Parallels Between Best Practices in After-School Programs and Prevention . Rose Lucey, Noah Adrians, Marquette University - P3

Beyond Presenting Problems: What Do University Counseling Center Clients Work on in Counseling? Elizabeth Prommel, University of Utah - P4

Accommodating Cognitive Disabilities in Psychotherapy. Sarah Patz, Merith Cosden, University of California-Santa Barbara - P5

Practitioner Practices in Treating Bullying and Relational Aggression Targets. Heather Bonnett, Kimberly Mason, Elizabeth Reynolds Welfel, Cleveland State University - P6

The Utility of Animal-Assisted Therapy for Counseling Psychology: Research and Clinical Practice. Melissa Trevathan, University of Houston - P7

Forgiveness and Faith as Shields of Protection for Soldiers in Combat. Donna Bailey, Nathaniel Wade, Iowa

State University; Richard Schobitz, U.S. Army; Julia Maier, Iowa State University - P8

Health Knowledge and Obesity Prevention Programs. Deirdre Brogan, Kara Harrington, Lynn Walsh, Maureen Kenny, Boston College - P9

Using Prevention Science to Promote Children's Mental Health. Rohini Puri, Geetika Agarwal, Wendy Reinke, Keith Herman, University of Missouri - Columbia - P10

Asian International Students' Openness to Counseling, Examining Perceived English Fluency and Acculturation Level. Megumi Omonishi, Phillip Gagne, Georgia State University - P11

HIV/AIDS Mental Health Counseling. Mark Kilwein, Clarion University of Pennsylvania - P12

Career Counseling with Adjudicated Youths. Robert Quinby, Walter Campbell, Robert Carnicella, Indiana University - P13

How Professional Psychologists Use Science in Practice. Jeffrey Wallis, Jeffrey Kahn, Jana Curran, Claire Delahunt, Illinois State University; Shannon Dixon, Marquette University - P14

Help-Seeking in Career Counseling. Annamaria DiFabio, University of Florence, Italy; Jean Luc Bernaud, University of Rouen, France - P15

Clients' Presenting Issues. Ingrid Weigold, Texas Tech University; Lisa Mancuso, University of Houston - P16

Self-efficacy and Self-Care-Buffering secondary Trauma during HIV/AIDs Outreach. Maryanne Williams, Michael Reese Hospital; Anita McGruder-Johnson, Allied Associates in HIV Essentials - P17

Addressing Internal Processes in Counseling Using the Self-confrontation Procedure. Elisabeth van Assum, Carla Haber, Carey Penner, Sheila Marshall, Richard Young, University of British Columbia, Canada - P18

Bilingual/Multilingual Issues in Psychotherapy. Basilia (Lia) Softas- Nall, Kevin Heaton, University of Northern Colorado - P19

Factors Hindering the Development of the Counseling Alliance. Robinder Bedi, University of Victoria, Canada; Jose F. Domene, Trinity Western University, Canada - P20

A Test of the Three-dimension Counseling Depth Model. GuangRong Jiang, Zhu Xu, Hu Shujing, Central China Normal University, China; Changming Duan, University of Missouri-Kansas City - P21

Longitudinal Outcomes of a Strengths-based Vocational Intervention. Briana Keller, University of Washington - P22

Promoting College Attendance in At-risk High School Seniors. Tom Krieshok, Selby Conrad, University of Kansas - P23

Clients Experiences of Metaphors in Taiwan. Shih-Chun Huang, MingDao University, Taiwan; Chia-Chi (Alicia) Hu, Purdue University - P24

Aloha! Assertive Community Treatment (ACT) Implementation in Hawaii. Clare Rountree, CARE Hawaii, Inc. - P25

Suppression Mediates the Relation Between Distress and Disclosure. Jeffrey Kahn, Angela Marotta, Illinois State University - P26

Cultural Considerations in Career Exploration Interventions. Rachel Pickett, Paul Gore, Jr., University of

Utah; Jane Swanson, Southern Illinois University Carbondale - P27

Video Education for Reduction of Prejudice Towards Schizophrenia. Takehiko Ito, Wako University, Japan; Tomoe Kodaira, Seirei Christopher University, Japan - P28

Implications for Working with Grieving Children and Adolescents. Megan Lytle, Seton Hall University - P29

The Counseling Counselors'™ Perception And Decision to The Confidentiality Issues at Hospitals/Clinics in Taiwan. Ya Ting Juang, National Taiwan Normal University, Taiwan - P30

Model of Sexual Assault Prevention with Diverse Youth. D. Brian Smothers, Wisconsin School of Professional Psychology; Melissa Kraemer Smothers, University of Wisconsin-Milwaukee - P31

Patient-Centered Primary Care: Patient and Physician Perceptions. Jennifer Sand, Sharon Robinson Kurpius, Arizona State University - P32

Suicide Prevention with College Students: A Collaborative Approach. Daniel Schulte, Karen Moses, Marielle Rasmussen, Joana Pabedinskas, Arizona State University - P33

Counseling Families in a Changing World. Kimberly Jorgensen, University of North Dakota; Loren Toussaint, Luther College - P34

PTSD and Associated Cognitive Difficulties: Counseling Psychologists' Role. Jovan Hernandez, Ren Stinson, Augustana University - P35

Assessing Needs: The Importance of Parent Perceptions. Kristin Weineke, Mary Walsh, Jillian DePaul, Boston College - P36

Counseling Outcomes: Linking Mental Health and Academic Achievement. Christopher Slaten, Carrie Sorenson, Jaquaye Glover, Thomas Baskin, University of Wisconsin-Madison - P37

Mindfulness Based Stress Reduction (MBSR) in Couples. Vered Hankin, Hines Veterans Affairs Medical Center - P38

Somali Refugee Multicultural Case Conceptualization. Jeff Walter, Ju-Ping Huang, Aimee Arikian, Chris Bedford, Kyu Jin Yon, University of Minnesota - P39

Androgyny Concept in Counseling and Psychotherapy. Gan Chun Hong, Kyushu University, Japan - P40

Counseling Interventions as Prevention of Workplace Bullying. Abha Singh, Komal Verma, Amity University, India - P41

Family Counseling Model. Anita Puri Singh, Pushpa Tyagi, Girls PG College, India - P42

Mindfulness, Metaphor & Psychotherapy: A New Group Format. Monica Cowart, Merrimack College - P43

Survivor Perspectives on the Role of Religion and Spirituality in the Sexual Assault/Abuse Recovery Process. Anna Matyja, Frances C. Shen, Yu-Wei Wang, Southern Illinois University at Carbondale - P44

Clergy Perspectives on the Role of Religion and Spirituality in the Sexual Assault/Abuse Recovery Process. Yu-Wei Wang, Anna Matyja, Ryan Perrin, Danielle Malmquist, Sarah Pollock, Southern Illinois University at Carbondale; Jessica Faul, University of Hawaii at Manoa - P45

Retention of "At Risk" College Students.
Shannon Chavez Korell, University of Wisconsin-Madison - P46

3:00 PM - 3:50 PM

EDU **Nontraditional Career Options for Counseling Psychologists** - Waldorf
Chair: Y. Barry Chung, Georgia State University

Presentations: Dominic J. Barraclough, University of Wisconsin-Platteville; Pam A. Cogdal, University of Memphis; Briana Keller, University of Washington; Megan Foley Nicpon, University of Iowa; Michael Schaub, Georgetown University; Lewis Z. Schlosser, New York City Department of Correction; Nathan Grant Smith, Texas Woman's University; Earlise C. Ward, University of Wisconsin-Madison; Elizabeth Nutt, Williams St. Mary's College of Maryland; Roger Worthington, University of Missouri-Columbia

Symposia

INT **Counseling Psychology and International Psychology: Future Possibilities** - 4M

Chair: Michael J. Stevens, Illinois State University

Presentations: Lawrence H. Gerstein, Ball State University; Puncy Paul Heppner, University of Missouri-Columbia; Neal Rubin, Argosy University, Chicago

Discussants: Linda Forrest, University of Oregon, Michael J. Stevens, Illinois State University

EDU, **DIV** **Counseling Psychology Model Training Values Statement Addressing Diversity** - 4K

Chairs: Laurie B. Mintz, University of Missouri-Columbia; Kathleen J. Bieschke, Pennsylvania State University

Presentations: *The Need for a Counseling Psychology Model Training Values Statement Addressing Diversity.* Aaron P. Jackson, Brigham Young University; Laurie B. Mintz, University

of Missouri-Columbia; Helen A. Neville University of Illinois at Urbana-Champaign; *Operationalizing, Instilling and Assessing Counseling Psychology Training Values Related to Diversity in Academic Programs.* Carrie Winterowd, Oklahoma State University; Eve Adams, New Mexico State University; Marie Miville, Teacher's College, Columbia University; *Application of the Counseling Psychology Model Training Values Statement Addressing Diversity to the Admission Process.* Michael I. Loewy, University of North Dakota; Cindy L. Juntunen, University of North Dakota; Changming Duan, University of Missouri-Kansas City; *Implementing the Counseling Psychology Model Training Values Statement Addressing Diversity in University Counseling Center Internship Programs: Challenges and Strategies.* Joyce Illfelder-Kaye, Pennsylvania State University; Elizabeth Reyes, University of Southern California; Karen Lese-Fowler, University of San Diego; Kevin Bursley, University of Pittsburgh

Developing Collaborative Systems of Care: Social Advocacy and Counseling Psychology - 4L

Chair: Susan D. Lonborg, Central Washington University

Presentations: *Integrating Medical and Psychological Service Delivery: Macrosystemic Considerations.* Terrence Schwartz, Central Washington University; *Building Mental Health Systems in a Diverse Underserved Area.* Neal Bowen, Hildago Medical Services; *Process and Outcome Evaluation: Individual and Systems Considerations.*

Susan Lonborg, Central Washington University.

Discussant: Kathleen Chwalisz, Southern Illinois University - Carbondale

SCI **Spotlight on Science: Contributions from Vocational Psychology** - Williford C

Chair: Paul A. Gore, University of Utah
Presentations: Jo-Ida Hansen,

University of Minnesota; Itamar Gati, Hebrew University, Jerusalem; Linda Subich, University of Akron; Steven D. Brown, Loyola University Chicago

DIV **The 800 Pound Gorilla: What Race and Genomics Are and Aren't in Meaning and Measurement** - 4C

Chair: Alvin Alvarez, San Francisco State University

Presentation: Vivian Ota-Wang, Senior Advisor at the Office of Behavioral and Social Sciences Research and Program Director at the National Human Genome Research Institute

The Association of Black Psychologists: 40 Years of Action - Boulevard B

Chair: Michael Connor, California State University, Long Beach

Presentations: *Goals and Commitments: Overview and Summary.* Michael Connor, Cal State University, Long Beach; *The Founding and Impact of ABPsi: Past, Present and Future.* Joseph White, University of California, Irvine; *Black Psychology: The Evolution of an Ideology.* Thomas Parham, University of California, Irvine; *ABPsi's Raison d'etre.* Harold Dent, Hampton University

PRA **Using Online Counseling to Address Educational Disparities: Techniques, Training, and Supervision** - Astoria

Presentations: Linda Castillo, Texas A & M University; Collie Conoley, University of Santa Barbara; Andrew Reichert, Texas A & M University; Sallie Boulos, Texas A & M University; Clare Duffy, Texas A & M University

White Racial Identity: Profiles, Factors, & Psychological Correlates -

International Ballroom North
Chair: Kwong-Liem Karl Kwan, University of Missouri at Columbia
Presentations: *Ego Strength Development and White Racial Identity Status.* Timothy Paquette, Northern Illinois University; *White Racial Identity Profiles of Marriage and Family*

Therapists. Nithyakala Karuppaswamy, University of Illinois at Springfield; *Racial Identity, Self-Esteem, and College Social Adjustment*. Patton Garriott, University of Missouri at Columbia
Discussant: Michael Mobley, University of Missouri at Columbia

Research Paper Presentations

International and Immigrant Issues - 4A

Chair: Earlise Ward, University of Wisconsin- Madison

Presentations: *Adaptation Process of Refugees from North Korea*. Changdai Kim Seoul National University, South Korea, Soonhyung Lee Seoul National University, South Korea, Meejung Chin Seoul National University, South Korea; *Helping Teen Immigrants Relocate*. Moshe Israelashvili Tel Aviv University, Israel; *International Relocation: Experiences of Japanese Families Upon Repatriation*. Deborah Wiese Whitman College, Takashi Aoki Whitman College, Katherine Weaver Whitman College; *Examining the Internationalization of Counseling Psychology: A Content Analysis*. Alex Pieterse George Mason University, Sarah Evans George Mason University

3:00 PM - 4:50 PM

Symposia

Adjustment Challenges of International Students and Their Spouses - PDR 4

Chair: Kenneth G. Rice, University of Florida

Presentations: *The Roles of Perceived Justice and Ethnic Identity in International Students' Adjustment*. Tong-An Shueh, University of Florida; Mark Fondacaro, John Jay College of Criminal Justice; *International Students and the Advisory Working Alliance*. Kenneth G. Rice, Huan J. Ye, Debra A. Anderson, Monica Bigler, Chun-Chung Choi, Aleksandra Nestic, Jorge Villegas, & Yanmei Zhang, University of Florida; *A Qualitative Investigation Into the*

Advising Experiences of International Students. Yanmei Zhang & Chun-Chung Choi, University of Florida; *Exploratory Study of Distress Among Spouses of International Students*. Monica Bigler & Greg Neimeyer, University of Florida
Discussant: Paul B Pedersen, Syracuse University and University of Hawaii;

INTConstructing Self and Identity in Counseling Psychology - 4D

Chair: Richard A. Young University of British Columbia, Canada

Presentations: *School Transition and Self-construction in Adolescents and Emerging Adults*. Jean Guichard, Institut National da Etude du Travail, France, Jacques Pouyaud, Institut National da Etude du Travail, France; *Self and Identity: A Discourse Analysis Perspective*. Graham Stead, Cleveland State University; *Narrative Perspectives on Construction of the Self: Implications for Counseling Psychology*. Marla Buchanan, University of British Columbia, Canada; *The Identity Project: An Action-theory Perspective*. Richard A. Young, University of British Columbia, Canada, Sheila K. Marshall, University of British Columbia, Canada, Ladislav Valach, University of British Columbia, Canada.

Discussant: David Blustein, Boston College

Globalization and College Counseling: Extending and Creating Culturally Relevant Services - Boulevard C

Chair: Karen W. Tao, University of Wisconsin - Madison

Presentations: *The Role of College Counseling and Minority Doctoral Students*. Karen W. Tao University of Wisconsin - Madison; *International Students and Trauma: Implications for College Counseling*. Monika Gutkowska, University of Wisconsin - Madison; *Korean American Undergraduates' Reactions to the Virginia Tech Incident*. Sara Cho Kim, University of Wisconsin - Madison

Discussant: Meera Rastogi, Edgewood College

International Adoptive Parents: Advancing Theory, Research, and Interventions - PDR 1

Chair: Karen M. O'Brien, University of Maryland

Presentations: *Lifespan Experiences of Parents Who Adopted Internationally*. Karen M. O'Brien, University of Maryland, Patricia Frazier, University of Minnesota, Maria Wydra & Maria Berbery, University of Maryland; *Theoretical Models for Intervention With White Adoptive Parents*. Kathy P. Zamostny & Erica Merson, University of Maryland; *Helping Parents Facilitate Adoptee Connection to Birth Culture*. Matthew J. Miller, Rebekah Grome, & Ji Eun Lee, University at Albany, State University of New York; *Racism: Training White Parents to Educate and Advocate*. Heather Z. Lyons, Loyola College in Maryland; *Racial Identity Development among White Adoptive Parents*. Marianne G. Dunn, University of Maryland
Discussant: Richard Lee, University of Minnesota

3:15 PM - 5:15 PM

Continuing Education Workshop

Pre-registration required.

The Millon College Counseling Inventory (MCCI): Measuring the Mental Health Needs of Today's Students - McCormick Boardroom

Stephen Strack, Ph.D., VA Ambulatory Care Center in Los Angeles

4:00 PM - 4:50 PM

Symposia

STUAdvocacy and Social Justice: Why Care and How Can I Become Involved? - Waldorf

Chair: lore m. dickey, University of North Dakota

Presentations: Sonya Bettendorf, Southern Illinois University Carbondale; Kayla McKibben Hand, Southern Illinois University

African American Substance Abuse: Innovative Implications for Research, Training, and Social Justice - 4B

Chair: Ezemenari M. Obasi, Southern Illinois University Carbondale
Presentations: *Innovative Experimental Research Methods in Substance Abuse Research Targeting People of African Descent*. Ezemenari M. Obasi, Southern Illinois University Carbondale; *Preparing Counseling Psychology Trainees for Substance Abuse Treatment with African American Clients*. Angela R. Bethea, St. Luke's-Roosevelt Hospital Center; *Examining the Role of Social Justice in Counseling to Improve Drug Treatment and Reform Drug Policies*. Ivory A. Toldson, Howard University

ECP Build and Expand your Independent Practice for ECPs -

Williford C
Chair: Traci E. Callandrillo, American University
Presentations: *Building your Independent Practice*. Jean Carter; *Unique Opportunities for Counseling Psychologists in Expanding Their Private Practice*. Melba Vasquez, Anderson House at Heritage Square; *Building a Forensic Practice*. Steve Eichel, Independent Practice

INT Cross-cultural Collaborations: Issues to Consider and Recommendations -

Boulevard A
Chair: Rachel Gali Cinamon, Tel Aviv University, Israel
Presentations: Kwong-Liem Karl Kwan, University of Missouri; Chia-Chih DC Wang, University of Missouri-Kansas City

EDU Education and Training in Psychology: The Role of Counseling Psychology -

Boulevard B

Chair: Kathlyn Dailey, Texas State University
Presentation: Cynthia Belar, Executive Director for Education, American Psychological Association

INT Genders in Action: Putting Theory into Practice - 4M

Chair: Matthew D. Graham; University of British Columbia, Canada
Presentations: *The Role of Gender in Recovery: An Action Theoretical Analysis*. Matthew D. Graham; University of British Columbia, Canada; *Smoke, In My Eyes: Pierre Bourdieu and the Social Context of Young Women's Tobacco Use*. Rebecca J. Haines, University of British Columbia, Canada; *Voicing QLGBT genders/sexualities: A Dialogical Approach to Investigating the Multiple Identities of QLGBT Migrants*. Sharalyn Jordan, The University of British Columbia, Canada
Discussant: Ruth Fassinger, University of Maryland

INT International Counseling Psychology Initiatives: Challenges and Successes - 4K

Chair: Tina Q. Richardson, Lehigh University
Presentations: Guerda Nicolas, Boston College; Angela DeSilvia, Boston College

Learn More about the Five Ethnic Minority Psychological Associations -

Williford B
Chair: Linda Forrest, President, Division 17, Society of Counseling Psychology
Presentations: Alvin Alvarez, President, Asian American Psychological Association; Joseph White, CoFounder, Association of Black Psychologists; Edward Delgado-Romero, President-Elect, National Latina/o Psychological Association; Manny Casas, President-Elect, Division 45, Society for the Psychological Study of Ethnic Minority Issues; Teresa LaFromboise, Former

President, Society of Indian Psychologists

DIV Social Justice Perspectives on the Integration of Religious Issues in Counseling Psychology - 4L

Chair: Paul Priester, Cardinal Stritch University
Presentations: *Do We Walk the Diversity Talk in Counseling Psychology: Anti-religious Bias in Admissions to APA-accredited Psychology Programs*. Paul Priester, Cardinal Stritch University; Asma Masri-Jana, University of Wisconsin-Milwaukee; *A National Survey of the Extent to which Counseling Psychology Training Programs View Religious/Spiritual Issues as a Component of Multicultural Training*. Sally Hage, University at Albany; *Muslims and Jews: Christian Privilege and Identity Issues*. Lewis Z. Schlosser, Seton Hall University; Saba R. Ali, University of Iowa

The Internationalization of Counseling: Assumptions, Challenges, and Opportunities --

Astoria
Chair: Lawrence H. Gerstein, Ball State University
Presentations: *The Counseling Profession Outside of the United States*. Lawrence H. Gerstein, Ball State University; Puncky Paul Heppner, University of Missouri-Columbia; *Internationalization of the Counseling Profession - An Indigenous Perspective*. Seung Ming Alvin Leung, The Chinese University of Hong Kong, China; Kathryn L. Norsworthy, Rollins College; *Methodological Issues in Cross-Cultural Research*. Stefania Aegisdottir, Ball State University; Lawrence H. Gerstein, Ball State University; Seung Ming Alvin Leung, The Chinese University of Hong Kong, China; Walter Lonner, Western Washington University; *International border crossings: Research, Training, and Practice*. Kathryn L. Norsworthy, Rollins College; Seung Ming Alvin Leung, The Chinese University of Hong Kong, China; Puncky Paul Heppner,

University of Missouri-Columbia; LiFei Wang, National Taiwan Normal University, Taiwan

EDU The Process of Licensure: Changes on the Horizon - 4A

Chair: Emil Rodolfa, Association of State and Provincial Psychology Boards
 Presentations: *The Licensing Process in the United States and Canada*. Roberta Nutt, Association of State and Provincial Psychology Boards; *The APA Model Licensing Act and Its Effect on Jurisdictional Practice*. Catherine Grus, Associate Executive Director for Professional Education and Training, American Psychological Association; *Changes to the Practicum Experience*. Nadya A. Fouad, University of Wisconsin-Milwaukee; *APAGS View of Licensure*. Nadia Hassan, American Psychological Association of Graduate Students
 Discussant: Emil Rodolfa, Association of State and Provincial Psychology Boards

Voices in the Wilderness: Religious, Gay-Affirming Counseling Psychologists

-- International Ballroom North
 Chair: Eve M. Adams, New Mexico State University
 Presentations: *Religious LGBT allies: God knows they exist*. Virginia Longoria & Eve M. Adams, New Mexico State University; *Addressing Values Conflicts with Conservatively Religious Psychology Trainees*. Tracie L. Hitter & Eve M. Adams, New Mexico State University; *Psychology and Christianity: Integrating My Faith and Career*. Lisa Amoroso-Johnson, Private Practice, Akron, OH; *Reflections of a Gay-affirming Muslim Counseling Psychology Trainee*. Natasha Ali, New Mexico State University; *Training Gay-affirming Christian Psychologists: Creating Places of Compatibility*. Stefani Hathaway, Bowling Green State University
 Discussant: Laurie Mintz, University of Missouri - Columbia; Kathleen J. Bieschke, Pennsylvania State University

INT Women at Different Stages of International Career Development - 4F

Chair: Tamiko Mogami, Tottori University Faculty of Medicine, Japan
 Presentations: *A Psychological Career in North America or in One's Homeland? Perspective of a Graduate Student*. Kaori Wada, McGill University, Montreal, Canada; *Perspectives on Building a Career in One's Homeland*. Tamiko Mogami, Tottori University Faculty of Medicine, Tottori, Japan; *Perspectives on Building a Career in North America*. Sayaka Machizawa, The Chicago School of Professional Psychology
 Discussant: Carolyn Zerbe Enns, Cornell College

Research Paper Presentations

Career Interests and Vocational Choice - 4C

Chair: Paul Gore, University of Utah
 Presentations: *Developing a Theoretically-based Indigenous Interest Inventory in Iceland*. Sif Eisnarisd, University of Iceland, Iceland, James Rounds, University of Illinois Urbana-Champaign; *Assessing the Degree of Crystallization of Career-Related Preferences*. Itamar Gati, Hebrew University, Israel, Aviva Shimoni, Beit Berl Academic College, Israel; *Who Decides? Adolescence and Life Choices in India*. Mrinalini Rao, University of Illinois Urbana-Champaign, Robert W. Roeser, Tufts University, Ayesha Gonsalves University of Pune, India, Yogita Hasta, University of Pune, India, Mukti Shah, University of Pune, India; *Antecedents of Foreclosure in Swiss Adolescents Career Decision-Making*. Andreas Hirschi, Pennsylvania State University

6:00 PM - 7:15 PM

Legislative Advocacy Reception in Honor of Honorable Senator Patty Murray - International Ballroom South



Introductions: Laura Palmer, Chair, ICPC Legislative Advocacy Committee
 Stephen M. Pfeiffer, Executive Director, Association for the Advancement of Psychology

Address: Honorable Senator Patty Murray, Senior Senator, State of Washington

Working Groups Poster Session: At the reception, each of the 21 working groups will present a brief summary of their discussions, goals and outcomes, and immediate next steps and opportunities for involvement.

Sunday, March 9, 2008

7:30 AM - Noon

Registration - 8th Street South, Lobby Level

8:00 AM - 8:50 AM

Symposia

ECPCareer Pathways of International Early Career Psychologists - Williford C
Chair: Yu-Wei Wang, Southern Illinois University

Presentations: *Building Your Research as an International ECP*. Oksana Yakushko, University of Nebraska-Lincoln; *Building an Academic Career in the U.S. and Other Countries*. Yu-Wei Wang, Southern Illinois University; *Building Your Counseling Center Career as an International ECP*. Pius Niutu, University of Texas-Austin; *Building an Independent Practice as an International ECP*. Tanya Razzhavaikina, Lincoln Nebraska

EDUChinese Counseling Journals and the Internationalization of Counseling Psychology - Boulevard C

Chair: Kwong-Liem Karl Kwan
University of Missouri

Presentations: S. Alvin Leung, The Chinese University of Hong Kong, China; Meei-Ju Lin, National Hualien University of Education, Taiwan; Charles C. Chan, The Hong Kong Polytechnic University, China; Lawrence H. Gerstein, Ball State University

Counseling Psychology Prevention Efforts in Guatemala - 4D

Chair: Michael Waldo, New Mexico State University

Presentations: *Guatemalan Psychologists' Views on Prevention: Barriers, Benefits, Training*. Ingrid E. Klanderud, Universidad del Valle de Guatemala, Guatemala; *Preventive Group Work in Guatemala: Training and Action*. Michael Waldo, New Mexico State

University; *Prevention in Guatemala: Needs, Initiatives and Future Directions*. Maria del Pilar Grazioso, Universidad del Valle de Guatemala, Guatemala; *Systems Change Fosters Prevention in Guatemala*. Lucia Cazali, Universidad del Valle de Guatemala, Guatemala; *Emergency Call Center in Guatemala: A Preventive Measure*. Claudia Luna-Asturias, Universidad del Valle de Guatemala, Guatemala; Discussant: Michael Waldo, New Mexico State University

Research Paper Presentations

Racism and Social Justice - 4C

Chair: Krista Chronister, University of Oregon

Presentations: *Development of the Awareness of Racism by Whites*. Shawn McDonald St. Mary's College; *Contextualizing Psychosocial Costs of Racism to Whites*. Lisa Spanierman, Nathan Todd, University of Illinois Urbana-Champaign; *Social Justice and Counseling Psychology*. Anneliese Singh University of Georgia; *Counseling Psychology Graduate Trainee's Commitment to Social Justice*. Amanda Beer, University of Illinois Urbana-Champaign

8:00 AM - 9:50 AM

Symposia

An International Perspective on Prevention in the Schools - Grand Ballroom

Chair: David L. Blustein, Boston College

Presentations: *A Comprehensive and Coordinated School-based Approach to Prevention and Health Promotion*. Maureen E. Kenny and Mary Walsh, Boston College; *Development of Emotional Competencies: An Emotional Intelligence Training*. Annamaria DiFabio, University of Florence, Italy; *Developing Career Curriculum for At-Risk Israeli Youth*. Rachel Gali

Cinamon, University of Tel Aviv, Israel; *The 'Difficult: No problem!' Training for Undecided Adolescents*. Lea Ferrari, Laura Nota, and Salvatore Soresi, University of Padua, Italy
Discussant: John Romano, University of Minnesota

Applying Culturally Expanded Perspectives of Traditional Career Theories with Latinas/os - 4M

Chair: Erin E. Hardin, Texas Tech University

Presentations: *Applying a Culturally Expanded Perspective of Holland's Theory to Latinas/os*. Jason Vasquez New Mexico State University, Rachel L. Navarro New Mexico State University, Erin E Hardin Texas Tech University; *Applying a Culturally Expanded Perspective of Super's Theory to Latinas/os*. Christine Robitschek, Matt Ashton, Erin Hardin Texas Tech University; *A Culturally Sensitive Perspective of Social Cognitive Career Theory with Latinas/os*. Lizette Ojeda and Lisa Y Flores University of Missouri-Columbia
Discussant: Consuelo Arbona, University of Houston

SCIChanging Realities of Academia: Counseling Psychologists Discuss Strategies for Obtaining Grant Funds -- Waldorf

Chair: Matthew P. Martens, University of Memphis

Presentations: Kathleen Chwalisz, Southern Illinois University; Richard M. Lee, University of Minnesota; Matthew P. Martens, University of Memphis; Karen D. Multon, University of Kansas; Elizabeth A. Skowron, Pennsylvania State University

Future Directions and Applications of Well-Being Research - 4B

Chair: Kimberley R. Monden, University of Kansas, Melinda J. Key-Roberts, University of Kansas
Presentations: *Theories and Models of Well-Being: A Brief Review*. Hung-Bin

Sheu Arizona State University; Robert W. Lent, University of Maryland; *Goals in Action: Well-Being Research on Campus*. Danny Singley, University of California, San Diego; Jeanne Manese University of California, Irvine; *Reconceptualizing Therapy Outcomes In Terms of Subjective Well-Being*. Jeana L. Magyar-Moe, University of Wisconsin, Stevens Point; *Well-Being and Culture: Challenges and Future Directions in Exploring Cultural Contexts*. Lisa Edwards, Marquette University
Discussant: Shane Lopez, University of Kansas

EDU **Integrative Training Model: Achieving Individual and Cultural Diversity Competence** - Williford B
Chair: Marie L. Miville Teachers College, Columbia University
Presentations: Marie L. Miville, Teachers College, Columbia University; Changming Duan, University of Missouri-Kansas City; Roberta Nutt, Association of State and Provincial Psychology Boards; M. Carol Pistole, Purdue University

International Professionals in U.S. Counseling Centers: Successfully Navigating Internship and Early Careers - Boulevard B
Chair: Jaquelyn Liss Resnick University of Florida
Presentations: *Navigating Internship*. Gizem Aksoy Toska, University of Florida and Turkey; *Dissertation and Beyond*. Lisa Ferdinand, University of Florida and Trinidad; *The Postdoctoral Experience*. Anca Mirsu-Paun, University of Florida and Romania; *Being a New Staff Member*. Kenneth T. Wang, University of Illinois and Taiwan; *Early Career Issues*. Hsui-Lan Cheng, University of Michigan and Taiwan; Chun-Chung Choi, University of Florida and China; *Being an Assistant Director*. Kuanwu Lin, University of Illinois and Taiwan

Traditional and Nontraditional Career and Family Choices - Boulevard A
Chair: Kristin Perrone, Ball State University & Debra Mollen, Texas Women's University
Presentations: *Women Pursuing Nontraditional Careers: A Social Cognitive Career Theory Perspective*. Julie Ericksen and Donna E. Schultheiss, Cleveland State University; *On Men and Work: Taking the Road Less Travelled*. Mary J. Heppner and Puncy Paul Heppner, University of Missouri-Columbia; *Hanging in the Balance: Women's Traditional and Non-Traditional Strategies for Managing Multiple Roles*. Gina Zanardelli and Jenelle N. Boo, Ball State University; *The Impact of Nontraditional Career Choices on Work-family Interface*. Z. Vance Jackson, Green Mountain State University, Stephen Wright and Kristin Perrone, Ball State University; *Gender Role Prescriptions, Household Labor, and Inequality*. Linda Najjar, University of Utah
Discussant: Susan C. Whiston, Indiana University

8:00 AM - 10:00 AM

Continuing Education Workshops
Pre-registration required.

An Interactional Approach to Critical Events in Supervision - 4A
Nicholas Ladany, Ph.D., Lehigh University
Myrna Friedlander, Ph.D., University at Albany/SUNY, Mary Lee Nelson, Ph.D., University of Wisconsin - Madison

Private Assessment in the World of Response to Intervention (RIT) - McCormick Boardroom
Amy Dilworth Gabel, Ph.D., Harcourt Assessment/The Psychological Corporation

Suicide: Prevention, Intervention, and Postvention - Williford A
John Westefeld, Ph.D., University of Iowa

9:00 AM - 9:50 AM

Symposia

Future of Counseling Psychology: Being Relevant Now and in 2020 - 4C
Chair: Steven J. Danish, Virginia Commonwealth University
Presentations: Bruce Walsh. *Ohio State University*; John Krumboltz. *Stanford University*; Nadya A. Fouad. *The University of Wisconsin-Milwaukee*; Rosie Bingham. *University of Memphis*.

STU **International Opportunities for Psychologists and Graduate Students** - Williford C

Chair: Karin Lutter, University of Oregon
Presentations: Benedict McWhirter, University of Oregon; John Romano, University of Minnesota; Nancy Elman, University of Pittsburgh (Semester at Sea); Luis Rivas, Department of Veterans Affairs, San Juan, Puerto Rico; Sif Einarisdóttir, University of Iceland

STU **Transitional Issues for Counseling Psychology Students: Studying and Working Abroad in a Changing World** - Boulevard C

Chairs: Manijeh Badiie, University of Nebraska-Lincoln; Meris Williams, University of British Columbia
Presentations: Robinder (Rob) Bedi, University of Victoria; Monicah Muhomba, University of Kentucky; Marco Gemignani, Duquesne University; Yu-Wei Wang, Southern Illinois University at Carbondale; Teresa Tuason, University of North Florida; Kuanwu Lin, University of Illinois at Urbana-Champaign; Ran Zhao, University of Missouri-Columbia; Rex Stockton, Indiana University; Chanda C. Corbett, Loyola College; Lynn Miller, University of British Columbia

SUNDAY, MARCH 9

10:00 AM - NOON

CLOSING SESSION/TOWN HALL MEETING

Grand Ballroom

Chair: Rosie Bingham, University of
Memphis and John Westefeld,
University of Iowa

Many Faces of Counseling Psychology
Awards

Presented by: Lauren Weitzman, Tri
Chair of the ICPC Awards and
Recognition Committee

International Perspective/Reflections:
Changming Duan, University of
Missouri, Kansas City

Early Career Perspective/Reflections:
Anne Farrar Anton, Hackensack
University Medical Center

Student Perspectives/Reflections: lore m.
dickey, University of North Dakota

Open Microphone/Audience Reflections

Working Group
Accomplishments/Reflections/Next
Steps: Kathy Bieschke, Penn State
University

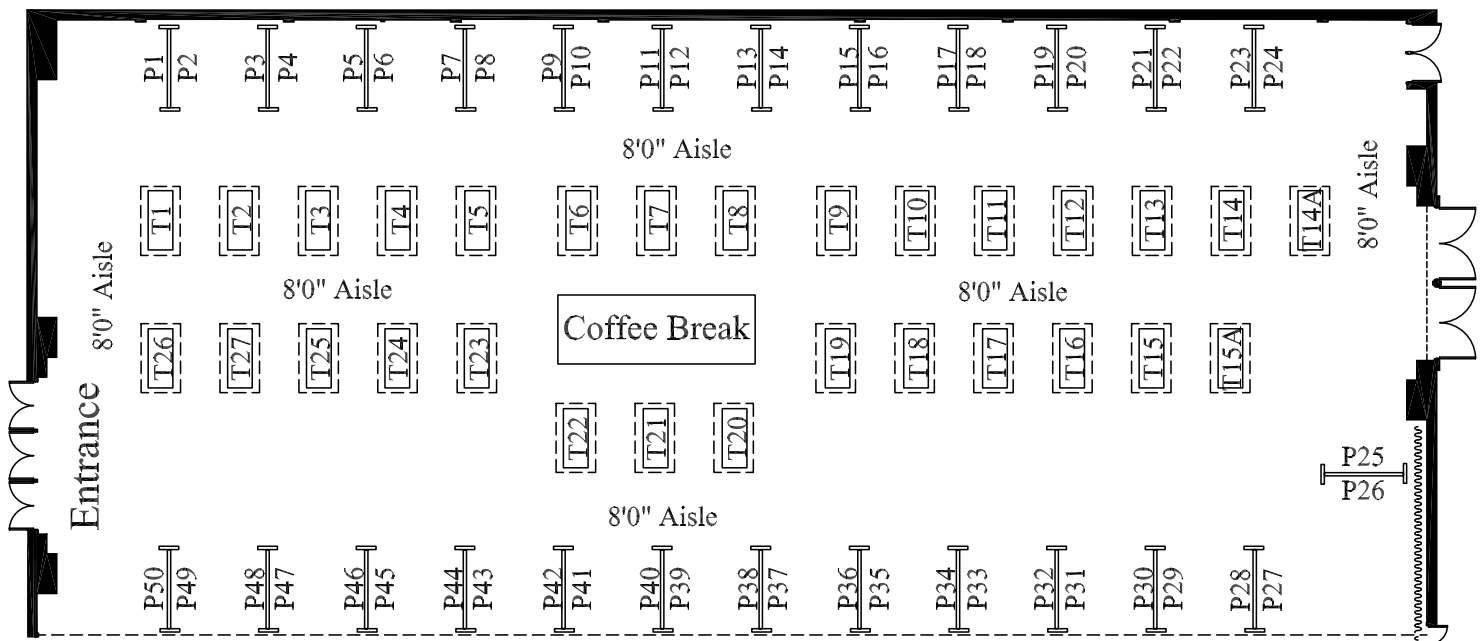
Appreciations: Linda Forrest, University
of Oregon and Laura Palmer, Seton
Hall University, Conference Co-Chairs

EXHIBIT HALL DIAGRAM WITH NUMERICAL LIST OF EXHIBITORS

2008 International Counseling Psychology Conference

March 2008

Hilton Chicago, International Ballroom South



Numerical Listing of Exhibitors

- 1 Pearson
- 2 University of Missouri-Kansas City Counseling Psychology Program
- 3 Cleveland State University
- 4 American Academy of Counseling Psychology
- 5 Microtraining and Multicultural Development
- 6 Northwestern University Masters Program in Counseling Psychology
- 7 Radford University Psy.D. Program
- 8 Society of Counseling Psychology (APA Division 17)
- 9 APAGS (American Psychological Association of Graduate Students)
- 10 Landro and Journey Consultants
- 11 The Psychological Corporation
- 12 Teachers College, Columbia University
- 13 Indiana State University Counseling Psychology Ph.D. Program
- 14 ACPA/CCAPS/SCUCC
- 14a Association Book Exhibit
- 15 National Career Development Association
- 15a APA Division 17 International Section

- 16 University of Oregon Counseling Psychology Program
- 17 Purdue University Counseling Psychology Program
- 18 University of North Texas
- 19 Student Affiliates of Seventeen/University of North Dakota
- 20 University at Buffalo
- 21 Adler School of Professional Psychology
- 22 UWM Department of Educational Psychology and UWM's Counseling Psychology Student Association
- 23 SAGE Publications
- 24 Ball State University Dept. of Counseling Psychology and Guidance Services
- 25 New Mexico State University Graduate School
- 26 Our Lady of the Lake University
- 27 National Register of Health Service Providers in Psychology

EXHIBITORS AND SPONSORS

Alphabetical Listing of Exhibitors and Sponsors

ACPA/CCAPS/SCUCC

4501 N. Charles St. Baltimore, MD 21210
The American College Personnel Association (ACPA) is the leading comprehensive student affairs association advancing student affairs and engaging students for a lifetime of learning and discovery. ACPA'S Commission for Counseling and Psychological Services (CCAPS) provides a home for professionals and graduate students interested and involved in counseling and psychological services in higher education. APA'S Section on College and University Counseling Centers (SCUCC) encourages, assists, and advances contributions related to the provision of services in university and college counseling services.
Table #14

Adler School of Professional Psychology

65 E. Wacker Pl. Ste. 2100 Chicago, IL 60601
312-201-5900 (phone), 312-201-5917 (fax)
admissions@adler.edu
Adler School of Professional Psychology offers a Doctoral program in Clinical Psychology (accredited by APA) and Masters of Arts Degrees in Counseling Psychology, Counseling Psychology: Art Therapy, Marriage and Family Counseling, Counseling and Organizational Psychology. Recently the School has also launched a master's program in Police Psychology, the first in the country
Table #21

American Academy of Counseling Psychology

409 Nottingham Road, Newark, DE 19711
302-598-1330 (phone)
steve@dreichel.com
The American Academy of Counseling Psychology is comprised of psychologists Board-certified in counseling psychology by the American Board of Professional Psychology (ABPP).
Table #4

APAGS (American Psychological Association of Graduate Students)

750 First Street NE, Washington DC 20002-4242
202-336-6014 (phone) 202-336-5694 (fax)
apags@apa.org
The American Psychological Association of Graduate Students is the voice of graduate student concerns within the APA. APAGS

is the largest group of organized graduate psychology students worldwide and is now one of the largest constituency groups within the APA. APAGS is the professional home for students in psychology. APAGS represents specific student needs and offers a wide array of services and benefits designed with students in mind.

Table #9

Association Book Exhibit

9423 Old Mount Vernon Rd. Alexandria, VA 22309
703-619-5030 (phone) 703-619-5035 (fax)
New and current titles of professional interest from leading publishers worldwide. Free catalog.
Table #14a

Association for the Coordination of Counseling Center Clinical Services

Georgia State University
Counseling Center
404-413-1656 (phone)
cbrack@gsu.edu
The Association for University and College Counseling Center Directors
The Association for University and College Counseling Center Directors (AUCCCD) is an organization comprised of 748 universities and colleges from the United States, including a number of members in Canada, Europe, the Middle East and Asia. The mission of AUCCCD is to assist directors in providing effective leadership and management of campus counseling centers. The organization promotes college student mental health awareness through research and education with special attention to issues of changing student demographics including diversity and multiculturalism. In 1949 the Association was established as a forum to examine organizational and clinical issues on campus. Throughout the intervening years, AUCCCD grew in membership and stature as the organization advocating on behalf of mental health issues in higher education.

Ball State University Dept. of Counseling Psychology and Guidance Services

Dept. of Counseling Psychology & Guidance Services, Ball State University, Muncie, Indiana 47306
765-285-8040 (phone), 765-285-2067 (fax)
showman@bsu.edu
The Department of Counseling Psychology and Guidance Services at Ball State University offers an APA-accredited Ph.D. in counseling psychology. We also offer mas-

ters degrees in Rehabilitation (CORE-accredited), School, Community (both CACREP accredited), and Mental Health counseling, and a masters degree in social psychology. We are especially proud of our focus on diversity and social justice, which is emphasized throughout our curriculum. CPSY alumni work in a wide variety of applied and academic settings.

Table #24

Cleveland State University

1419 Rhodes Tower, 2121 Euclid Avenue, Cleveland, OH 44115
216-687-4605 (phone)
Cleveland State University's Ph.D. Program in Urban Education: Specialization in Counseling Psychology - a multidisciplinary curriculum with a mission to educate scientist-practitioners competent to meet the counseling, psychotherapy, and psycho-educational needs of diverse populations from metropolitan areas.
Table #3

Indiana State University Counseling Psychology Ph.D. Program

Department of Communication Disorders and Counseling, School, and Educational Psychology, College of Education, Terre Haute, IN 47809
812-237-2870 (phone)
jcampbell2@indstate.edu
The Counseling Psychology Ph.D. Program at Indiana State University prepares highly qualified professional psychologists who value (a) scientific inquiry, (b) good critical thinking that increases problem solving skills, and (c) highly effective intervention techniques. In addition, the program promotes the interpersonal values of compassion, self-awareness, genuineness, a commitment to social justice, and an authentic appreciation for diversity.
Table #13

Landro and Journey Consultants IRIS Technologies, Inc.

104 Industrial Park Rd.
Greensburg, PA 15601
724-832-9855 (phone), 724-832-8999 (fax)
Landro can access any of 100,000 digital video playback segments ("plays" for short), without rewinding or fast-forwarding. About the size of a small VCR, the Landro Play Analyzer allows clinicians, educators or instructors to digitally record students in their clinical sessions and then analyze those video recordings without ever using video tape

again... It's like creating a video power point on the fly. Landro lets you spend time truly analyzing performance instead of searching through videotapes and trying to log specifics.

Table #10

Marquette University Counseling Psychology

P.O. Box 1881
Milwaukee, WI 53201-1881
www.mu.edu

Microtraining and Multicultural Development

141 Walnut Street, Hanover, MA 02339
888-505-5576 (phone/fax)
info@emicrotraining.com

Microtraining and Multicultural

Development is widely recognized as a leading provider of books and DVD's focused on multicultural and competency-based counselor and therapist education.

Table #5

National Career Development Association

305 N. Beech Circle, Broken Arrow, OK 74012

1-866-FOR-NCDA (phone), 918-663-7058 (fax)

www.ncda.org, dpenn@ncda.org

The National Career Development

Association (NCDA) is a division of the American Counseling Association. The mission of NCDA is to promote the career development of all people over the life span. To achieve this mission, NCDA provides service to the public and professionals involved with or interested in career development, including professional development activities, publications, research, public information, professional standards, advocacy, and recognition for achievement and service.

Table #15

National Register of Health Service Providers in Psychology

1120 G St NW, Ste 330, Washington, DC 20005

202-783-7663 (phone), 202-347-0550 (fax)

www.nationalregister.org, Andrew@nationalregister.org

The National Register of Health Service Providers in Psychology is the largest credentialing organization for licensed psychologists. We invite ICPC attendees to stop by our booth to receive complimentary copies of our new publications: *Marketing Strategy and Financial Planning to Build Your Professional Practice* and *Make the Right*

Move: Health Service Provider in Psychology Credentialing. In your registration packet is the 4-Volume DVD: *Legacy of Excellence*. To learn more about the National Register, visit www.nationalregister.org.

Table #27

New Mexico State University Graduate School

MSC 3CEP, Box 30001, Las Cruces, NM 88003-8001

575-646-1142 (phone)

eadams@nmsu.edu

The table will provide information about New Mexico State University and its Graduate School.

Table #25

Northwestern University Masters Program in Counseling Psychology

The Family Institute 618 Library Place, Evanston, IL 60201

847-733-4300 Ext 205 (phone), 847-733-0390 (fax)

m-elyash@northwestern.edu

Northwestern University Masters Program in Counseling Psychology is a terminal counselor training program that emphasizes individual personality and social systems approaches to working with individuals, groups, families, and organizational systems. Rigorous, intensive supervised clinical training and the ongoing integration of theoretical knowledge and applied practice are program hallmarks along with closely monitored field training experiences. Distinctive features include: highly individualized training, the innovative Two Plus Curriculum for career changers, small classes, personalized advising and quality instruction.

Table #6

Oklahoma State University College of Education

409 Willard Hall

Stillwater, OK 74078

www.okstate.edu/education

Our Lady of the Lake University

Department of Psychology, 411 SW 24th Street San Antonio, TX 78207

210-431-3914 (phone), 210-431-3927(fax)

www.lake.ollusa.edu,

bobem@lake.ollusa.edu,

andek@lake.ollusa.edu

Our Lady of the Lake University offers a PsyD in Counseling Psychology, which is designed to train students for independent

practice with individuals, couples, families and groups and for the supervision and training of mental health practitioners. The program emphasizes brief, systemic and post-modern approaches to psychotherapy. The Psychology Department also offers MS programs in Marriage and Family Therapy and Counseling and School Psychology, as well as a Providing Psychological Services to Spanish Speaking Populations certificate.

Table #26

Pearson

5601 Green Valley Drive

Bloomington, MN 55437

952-681-3000 (phone), 952-681-3298 (fax)

www.pearson.com, kara.jones@pearson.com

Pearson is the leader in assessment, educational publishing, student information, and services. We provide effective and innovative assessment instruments for clinicians and educators as well as curriculum products, student information systems, professional development, and teacher certification programs. Our respected products in the area of clinical assessment include the MMPI-2™ family of tests, the Millon™ Inventories, the PPVT™-4 test, the BASC-2 series and the Kaufman group of assessments.

Table #1

The Psychological Corporation

19500 Bulverde Rd., San Antonio, TX 78259

210-339-5000 (phone), 210-339-5396(fax)

As a trusted publisher, the Psychological Corporation, a division of Harcourt Assessment, Inc., partners with customers worldwide to provide unique and valuable solutions for practitioners, including quality assessment tools to better understand the people they serve, intervention and treatment planning, and progress measurement.

Table #11

Purdue University Counseling Psychology Program

Counseling Psychology Purdue University Department of Educational Studies

Beering Hall of Liberal Arts and Education

100 N. University Street, Room 5168

West Lafayette, IN 47907-2098

765-494-9746 (phone), 765-496-1228 (fax)

ayseciftci@purdue.edu

Table #17

Radford University Psy.D. Program

Department of Psychology, Box 6946

Radford University, Radford, VA 24142

EXHIBITORS AND SPONSORS

540-831-6817 (phone)

jwerth@radford.edu

The Radford University Psy.D. Program will be enrolling its first cohort in Fall 2008.

Taking a Practitioner-Scholar perspective, the program has a focus on rural mental health with emphases on social justice, diversity (broadly defined), and evidence-based practice in psychology incorporated throughout the curriculum. The program is designed for post-Master's students who want intensive training to become comprehensive mental health service providers, primarily in rural areas.

Table #7

SAGE Publications

2455 Teller Road Thousand Oaks, CA 91320

805-499-0721(phone), 805-499-0871(fax)

www.sagepub.com, lisa.lamont@sagepub.com

SAGE Publications-an independent international publisher in the social sciences, technology and medicine-provides journals, books, and electronic media of the highest caliber. Researchers, students, and professionals have relied on our innovative resources for over 40 years. Please stop by our booth or visit us at www.sagepub.com.

Table #23

Seton Hall University

400 S. Orange Avenue

South Orange, NJ 07079

www.shu.edu

The Counseling Psychology PhD program at Seton Hall University has been accredited by APA since 1999. The overarching goal of the Counseling Psychology PhD program is to prepare counseling psychologists in the scientist-practitioner model to assume roles as responsible, competent members of the professional psychological community. Our students understand the value of science and research for the practice of psychology and the value of applied practice for the science of psychology, and they have developed skills, knowledge, and self-understanding that allow them to help persons take responsibility for and control of their lives within the context of their development as human beings and the various systems and environments that impact on their lives.

Society of Counseling Psychology (APA Division 17)

Table #8

Student Affiliates of Seventeen/University of North Dakota

Memorial Union Room 13, 2901 University Ave Stop 8385 Grand Forks, ND 58202-8385

The College of Education and Human Development is cosponsoring a booth with the Student Affiliates of Seventeen for the purpose of providing information about SAS, Division 17 and the exciting programs at the University of North Dakota. There will also be ICPC Student Programming Subcommittee members on hand to answer questions about programming events that are uniquely suited to meet student needs. There will also be free gifts and prizes!

Table #19

University at Albany/SUNY Counseling Psychology Program

ED 220, Educational and Counseling Psychology University at Albany/SUNY Albany, NY 12222

518-442-5040 (phone), 518-442-4953 (fax)

The Ph.D. Program in Counseling Psychology at the University at Albany, continuously accredited by APA since 1980, provides generalist, eclectic scientist-practitioner training. In our program, questions of science and practice are viewed as complementary and interdependent, and the scientist-practitioner model is implemented thorough developmentally sequenced course work, practica and internships, collaborative and independent research, the opportunity to teach undergraduate courses and supervise master's students, and to study in Spain or Portugal.

Teachers College, Columbia University

525 W 120th Street New York, NY 10027-6696

212-678-3710 (phone), 212-678-4171 (fax)

Teachers College, Columbia University is an urban, independent, diverse and multicultural, comprehensive graduate and professional school of education. TC is a leading activist institution concerned with extending educational opportunity and improving the quality of education. With over 60 programs of study, concentrations include counseling and clinical psychology as well as education.

Table #12

Texas A&M University, College of Education and Human Development

Department of Educational Psychology College Station, Texas 77843

979-845-1831 (phone), 979-862-1256 (fax)

The Counseling Psychology program is one of two APA Accredited programs in the Department in a research I university of over 44,000 students with a diverse and international tradition.

University at Buffalo Department of Counseling, School, and Educational Psychology

Department of Counseling, School, and Educational Psychology, 409 Baldy Hall, Buffalo, NY 14260;

716-645-2484 (phone), 716-645-6616 (fax)

The University at Buffalo has an APA-accredited combined Counseling Psychology and School Psychology Program that adheres to the scientist-practitioner model of training. Our doctoral students are encouraged to conduct research on significant social and are grounded in psychological science that addresses etiology, prevention, and intervention with contemporary problems. Our department has been identified as one of the top 10 most productive research departments in our scholarly areas in the United States by Academic Analytics!

Table #20

University of North Texas

Psychology Department, Box 311280

College of Arts and Sciences

Denton, TX 76203-1280

940-565-2671 (phone)

The University of North Texas at Denton is a student-centered public research university with more than 34,000 students. UNT offers 50 doctoral degree programs, many nationally and internationally recognized. The Psychology Department is within the academic heart of the university, the College of Arts and Sciences, and emphasizes the college motto "Excellence, Unity, Diversity."

The department has three doctoral programs accredited by the American Psychological Association: Clinical Psychology, Counseling Psychology, and Health Psychology/Behavioral Medicine.

Table #18

UWM Department of Educational Psychology and UWM's Counseling Psychology Student Association

Department of Educational Psychology, PO Box 413 UW-Milwaukee

Milwaukee, WI 53201-0413

414-229-4767 (phone), 414-229-4939 (fax)

http://www4.uwm.edu/soe/departments/ed_psychology/

sagillis@uwm.edu, wester@uwm.edu

Please stop by our table to receive information about the University of Wisconsin's Counseling Psychology Ph.D. program and their student association, the Counseling Psychology Student Association (CPSA). CPSA was formed approximately 4 years ago by the program's students and is completely under their operation. We will offer information for students or faculty members that may be interested in learning how to start a student organization for their program, as well as its function and benefits.

Table #22

University of Missouri-Kansas City Counseling Psychology Program

ED 215, 5100 Rockhill Road, Kansas City, MO

816-235-2495 (phone), 816-235-5720 (fax)
murdockn@umkc.edu

Counseling Psychology Ph.D. program and Master's program in Counseling and Guidance

Table #2

University of Oregon Counseling Psychology Program

5251 University of Oregon

Eugene, OR 97403-5251

541-346-2456 (phone), 541-346-6778 (fax)

<http://education.uoregon.edu/field.htm?id=46>

The University of Oregon Counseling Psychology Program emphasizes an ecological model of training, research, and practice.

Prevention and community-based research are integrated and emphasized. The Program is committed to social justice and to infusing multicultural counseling competency training throughout the curriculum. The program was winner of the 2001 APA Suinn Minority Achievement Award, and was named by SAMHSA in 2007 as a "Model Training Program" for our attention to issues of human diversity in training and research.

Table #16

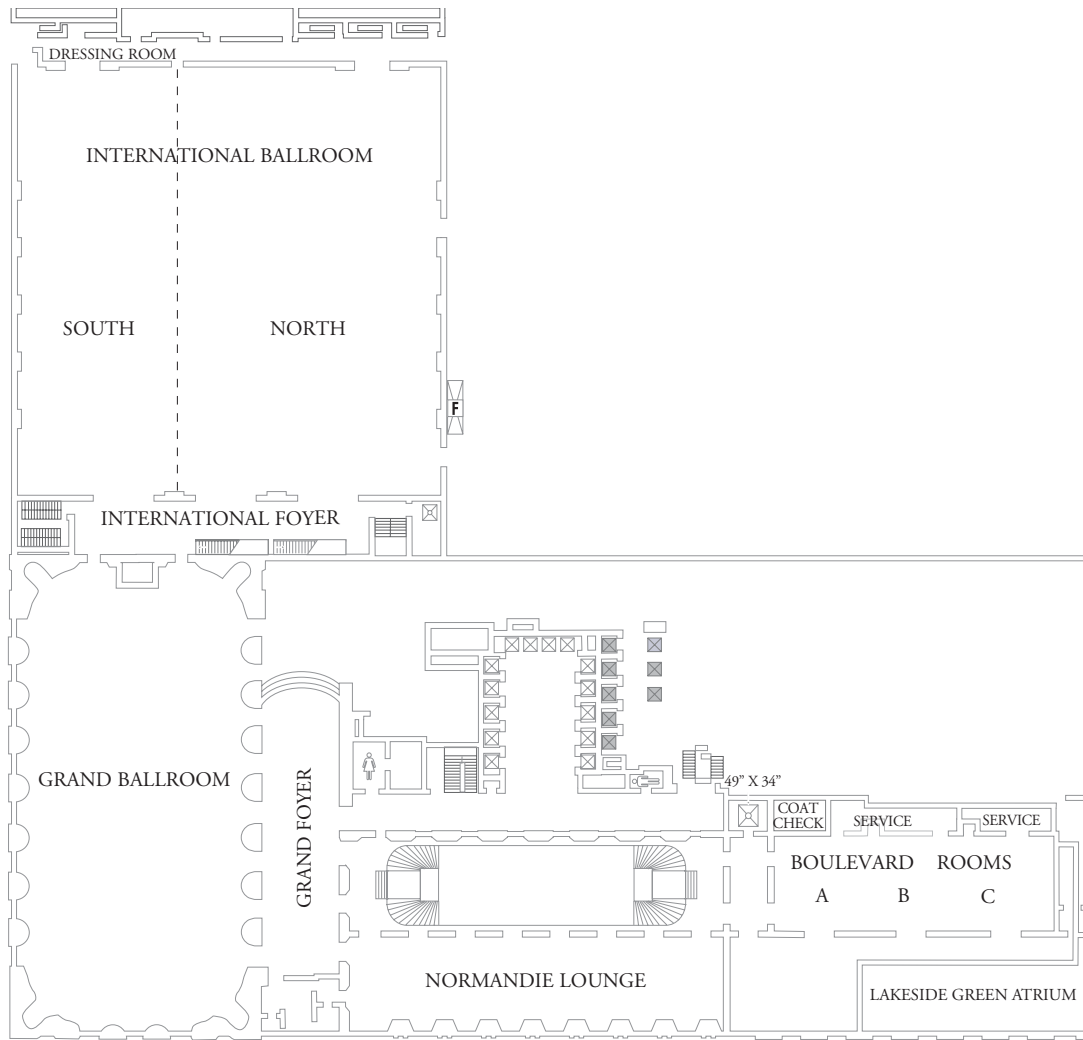


Cultural Sensitivity Tips for International and U.S. Participants of the ICPC

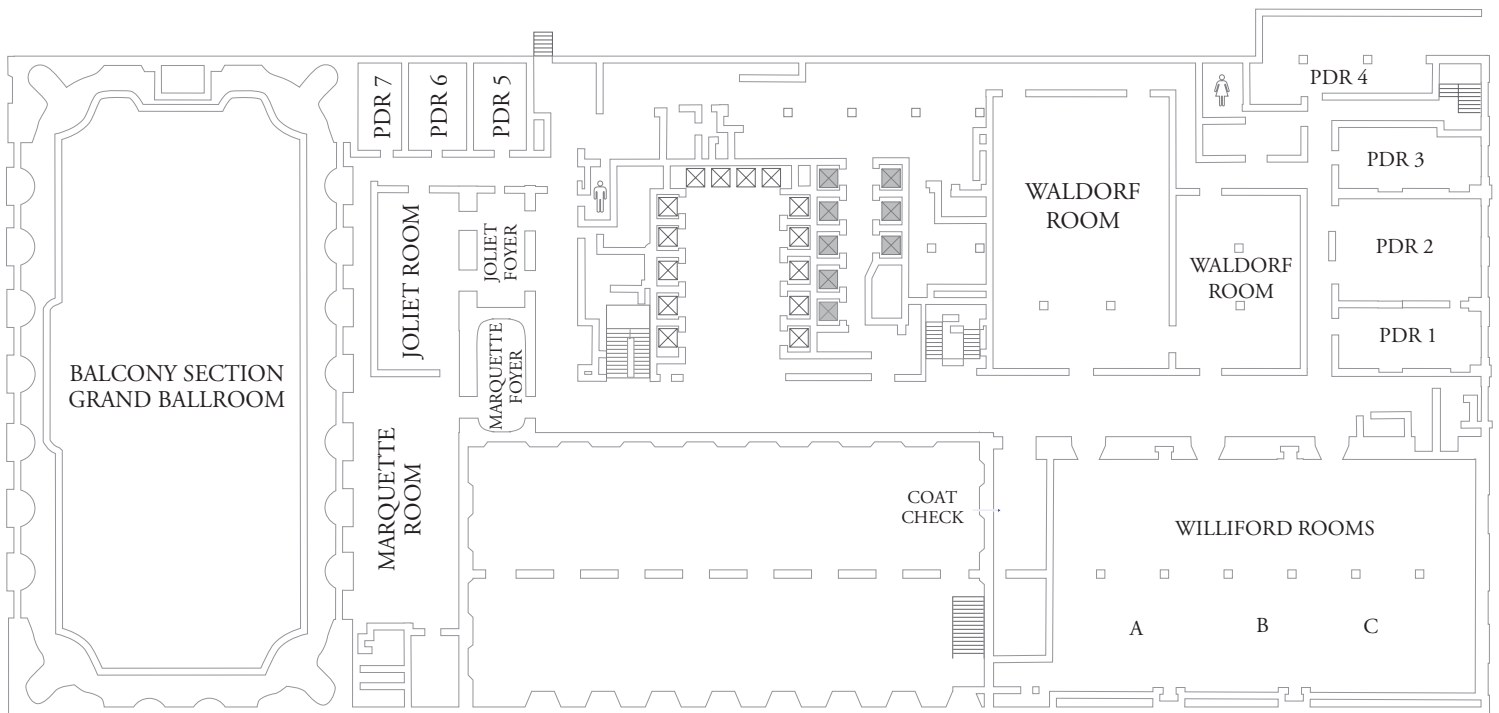
1. Customs vary regarding whether to use first name or title and last name to address someone (e.g., Dr., Ms., Mr.). One may want to inquire how the other person would like to be addressed. It may also be safer to start with being more formal until requested otherwise.
2. Exchange of business cards is popular in some countries. Please bring plenty of business cards to the conference if feasible.
3. In some countries it is more polite to use both hands when giving or receiving materials (e.g., business cards, drinks). You may consider reciprocating in such interactions.
4. Different cultures perceive time differently. Because of the jam-packed multi-track programs at the ICPC, it may be helpful to assume that all events will start and end according to their scheduled times so that all participants will have enough time to do their presentations or to attend their chosen sessions.
5. When dining with other people at a restaurant, there could be misunderstandings regarding who will pay for the meal. It may be helpful to make it explicit in the beginning (e.g., asking the server if you can have separate checks, offering that the meal is on you). It is also safer to assume that everybody will pay for oneself unless somebody offers a treat.
6. Although gift-giving is customary in some countries between the invitee and the host, it is not expected at the ICPC.
7. In some countries it is not customary to have social hours at conferences. In the U.S. such social events are considered great opportunities to network. All are encouraged to participate in these events to connect with international colleagues.
8. Handshaking is probably the most common form of greeting when meeting somebody, although hugging may be a preferred greeting between people who have already established a closer relationship. The custom of hugging varies across cultures (e.g., whether it is appropriate to hug someone of the same sex or the other sex, or whether to hug at all). Therefore, one may want to ask for permission before proceeding to hug someone whom you don't know very well.
9. The physical distance between two persons when talking varies across cultures. For some, maintaining at least one arm's length is desired. Others may prefer to be closer or farther apart. The situation also depends on how crowded or noisy the room is. When talking to someone you don't know well, you may want to observe whether the person seems to be moving closer or away from you, and find a compromise in proximity.
10. Eye contact is another interesting dimension of cultural differences. In some cultures, people tend to maintain more eye contact when listening and less when speaking. In other cultures, people may show respect by having more or less eye contact.
11. Individuals from some countries do not engage in small talk. For instance, they might not start a conversation with "Hello" or "How are you?"
12. Individuals from some countries might not display much emotion in their conversations. Such persons should not be viewed as aloof or distant.
13. When meeting a group of people from a country that emphasizes hierarchical order in status, it is expected that the person with the highest status should be addressed first and be given more attention than those with lower statuses.

HILTON CHICAGO HOTEL

SECOND FLOOR

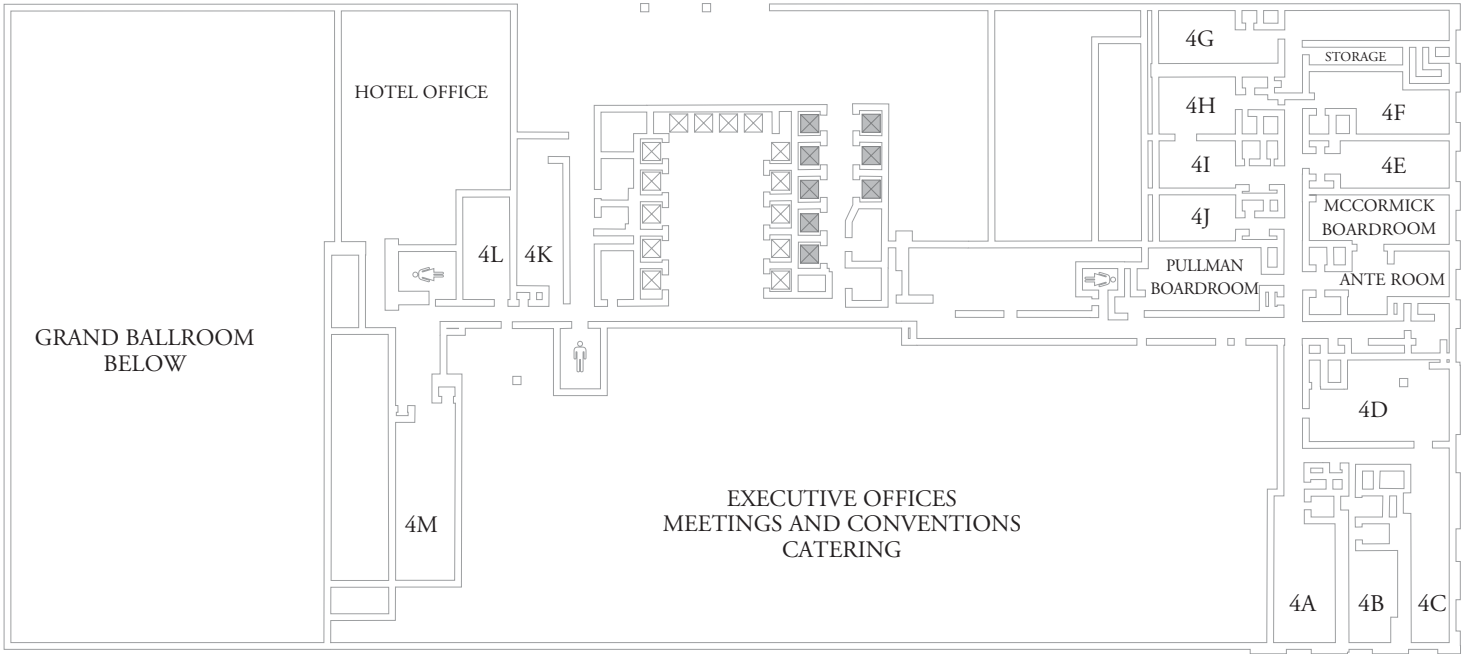


THIRD FLOOR

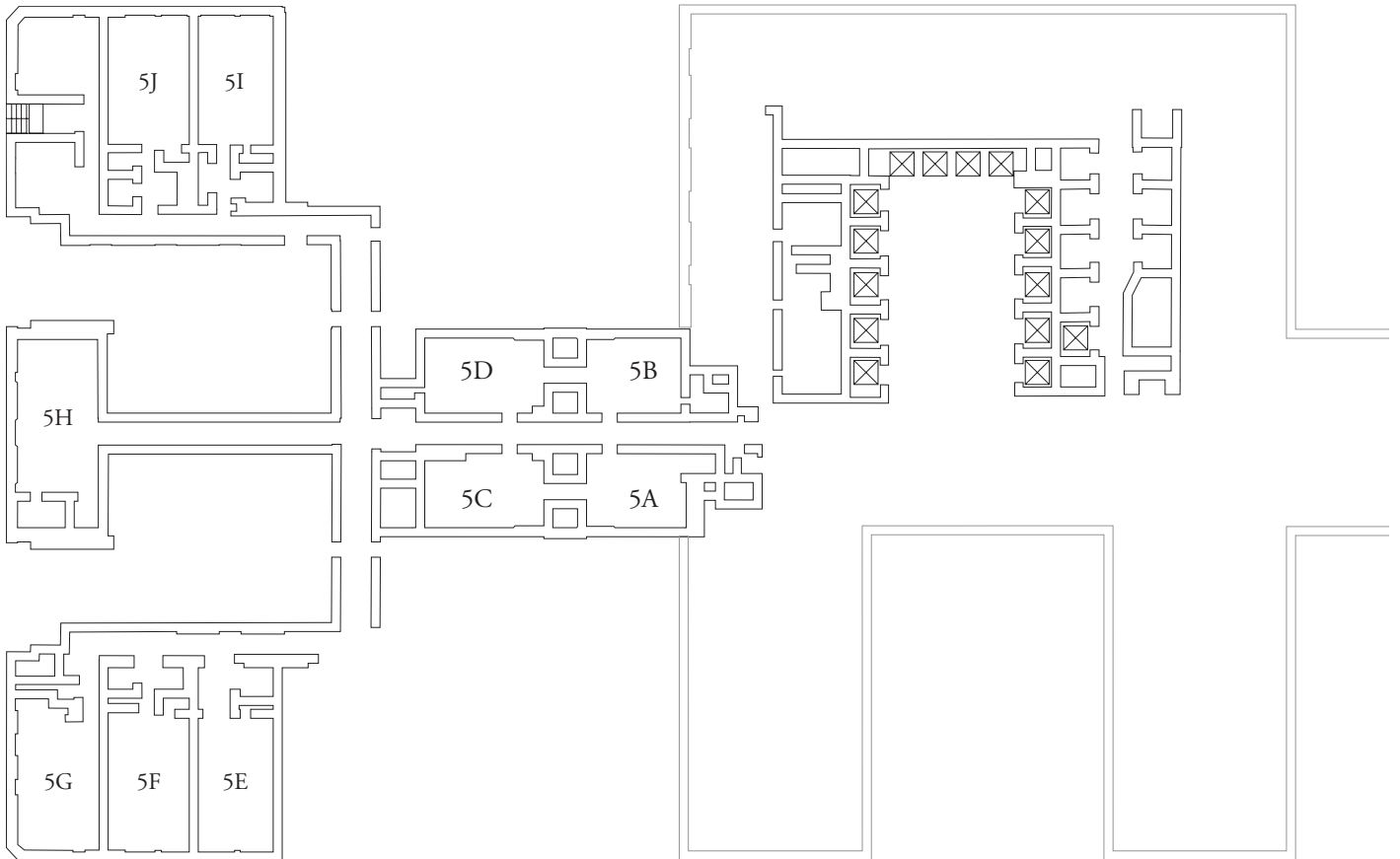


HILTON CHICAGO HOTEL

FOURTH FLOOR



FIFTH FLOOR



Many Thanks to the Following Sponsors For Supporting the 2008 International Counseling Psychology Conference!

GOLD LEVEL SPONSORS

National Register of Health Service Providers in Psychology
Our Lady of the Lake University
Pearson Assessments
Sage Publications
Seton Hall University
University of Oregon (Provost's Office and Office of the Dean of College of Education)

SILVER LEVEL SPONSORS

Association for University and College Counseling Center Directors
Cleveland State University
Teachers College, Columbia University
Texas A & M University, Education and Human Development
University of Missouri – Kansas City, Counseling Psychology Program

BRONZE LEVEL SPONSORS

ACPA/CCAPS/SCUCC
American Academy of Counseling Psychology
Association for the Coordination of Counseling Center Clinical Services
Ball State University, Department of Counseling Psychology and Guidance Services
Indiana State University, Counseling Psychology Ph.D. Program
Journey Consultants/Landro
Marquette University, Counseling Psychology
Microtraining and Multicultural Development
National Career Development Association
Oklahoma State University, College of Education
The Psychological Corporation
Purdue University, Counseling Psychology Program
Radford University, Psy. D. Program
Student Affiliates of Seventeen at University of North Dakota
University of North Texas, Department of Psychology
University of Illinois
University of Oregon (Provost's Office and Office of the Dean of College of Education)
UWM Department of Educational Psychology and UWM's Counseling Psychology Student Association

Thanks also to the following supporters!

Association of Multicultural Counseling & Development
National Latina/o Psychological Association
Texas State University Counseling Center
Towson University Counseling Center

Guide your students to a healthier state-of-mind.

Join us on Saturday, March 8 for a workshop on the Millon College Counseling Inventory (MCCI™) test.

Developed specifically for use with college students the MCCI will prove to be a useful tool as it:

- Addresses key concerns of college students including depression, stress, alcohol abuse and relationship difficulties
- Requires only 20–25 minutes to complete
- Can easily fit into your counseling process
- Is multidimensional; may eliminate the need for a battery of tests
- Is easy to score and interpret (computer and hand-scoring available)

Space at the MCCI workshop is limited, be sure to

Register Today

www.icpc2008.org

Visit the Pearson Booth

Pearson is the leader in assessment, educational publishing, student information, and services. We provide effective and innovative assessment instruments for clinicians and educators as well as curriculum products, student information systems, professional development, and teacher certification programs. Our respected products in the area of clinical assessment include the Millon™ Inventories, the MMPI®-2 family of tests, and the Kaufman group of assessments.

PearsonAssessments.com



PEARSON